



Charlottesville, VA
Phone (434) 817-9595
Fax (434) 817-9596
www.skylinelighting.com



PRODUCT CATALOG

Exit Signs & Emergency

Energy Efficient

Recessed • Bathroom • LED & Retrofit Kits • GFC Interrupter

HID/Commercial

Fluorescent

Fluorescent Emergency Lighting Ballasts

Induction Lighting

NEW Products

SKYLINE LIGHTING MISSION STATEMENT

Skyline Lighting, Inc. has been a provider of high quality lighting products since 2003. The personnel at Skyline Lighting have over 20 years of experience in the lighting industry and are dedicated to industry leading service and value. We offer competitive pricing on all of our products and will match or beat most prices in the industry.

- Skyline Lighting operates 20 warehouses across the USA, Canada and Mexico and will ship most orders within 24-48 hours.
- We stand behind our products 100%, offering up to a 5 year manufacturer warranty.
- All of our products meet or exceed UL requirements and are UL or ETL approved. *Consult factory for Canadian approvals.*
- Skyline Lighting is dedicated to serving the environment by offering energy conservation products and green solutions.

*For complete catalogs, specification sheets,
and other **Skyline** products, please visit us online.*

www.skylinelighting.com



SKYLINE LIGHTING MASTER CATALOG

TABLE OF CONTENTS

Exit Signs & Emergency Lighting	1
Energy Efficient Lighting	11
Recessed Lighting, Bathroom Lighting, LED & Retrofit Kits, GFC Interrupter . . .	19
HID/Commercial Lighting	27
Fluorescent Lighting	37
Fluorescent Emergency Lighting Ballasts	43
Induction Lighting	47
NEW Products	51



Charlottesville, VA
Phone (434) 817-9595
Fax (434) 817-9596
www.skylinelighting.com

WARRANTY

Skyline Lighting Inc.'s products are under warranty for 1-5 years from the time of shipment, on any component that fails due to manufacturer's defect. Products are fit for the purpose(s) intended and not for any other reason. This warranty does not apply to products that have been altered, subject to neglect, abuse or accidents, including shipping damages.

Skyline Lighting will repair or replace any defective merchandise, without charge, (at our sole discretion), for a period of one year from the date of shipment. Batteries are provided as part of unit equipment and carry a warranty, pro rated of 5 years. This warranty is exclusive and in lieu of all other warranties, whether expressed, implied or statutory.

Skyline Lighting is not responsible for special, indirect, incidental or consequential damages, regardless of the form of action, strict liability, or tort, including negligence/not for loss profits. Skyline disclaims any liability for any claims or damage arising out of or connected with this agreement regarding the manufacture, sale, use, maintenance, repair or modification of the products, or replacement parts beyond the purchase price of this product. This limit of liability shall apply to any liability for default or in connection with the product, parts, or service based on warranty. On any shipments sent directly to a job site Skyline Lighting does not accept any responsibility for missing or damaged items. Please request a written warranty for the product you have or you are purchasing.

RETURN POLICY

Skyline Lighting warrants that its products are free from defects in workmanship. Should a unit fail, Skyline Lighting will replace the product, so long as the unit fails within the warranty period. A Return Authorization Number (RGA) will be issued and product is to be sent back freight pre-paid. Once defectiveness is determined, Skyline Lighting will issue credit towards the customer's account.

RGA POLICY

Due to the amount of time involved in issuing and RGA or RMA, the following will apply to all requests for returns:

1. All Return requests must have the original invoice numbers and purchase orders numbers on the requests as well and a valid reason for return. Release numbers are not acceptable.
2. Credits for return products must have a tracking number and proof of delivery to be sent to us either by fax or e-mail. This is especially true for returns to the warehouses. Debits create accounting problems and take a lot of extra time to sort out.
3. Restocking fees cannot be waived unless there is prior approval from the factory.
4. Products over 90 days old, shipped to a job site, installed or in opened boxes will not be accepted back.

TERMS AND CONDITIONS

Skyline Lighting accepts your order upon the express condition that you agree to the terms and conditions contained herein. Payment terms are Net 30 from the invoice date. In the event that it becomes necessary for Skyline Lighting to retain legal representation to collect the debt, purchaser agrees to pay all reasonable costs incurred for such collection. Ship dates are only an estimate and shall not be liable for delays in delivery, performance or failure to deliver or perform due to causes beyond our reasonable control. We will not be responsible for any damages, charge backs, or penalties, whether direct, or indirect, resulting from our failure to perform or delay in performing.

Freight will be prepaid and allowed to all destinations within the contiguous 50 states over \$1,500.00. Freight charges will be added separately to the invoice.



All exit signs and emergency products are UL924 listed and meet NFPA Life Safety Codes 101® and 101B®.



DUAL CIRCUIT EXIT SIGNS

Los Angeles

Several signs are available with dual circuit capability to meet certain local codes. Dual circuit capability is often required within healthcare facilities and certain municipalities (such as Los Angeles). These LED signs are efficient and low maintenance.

Dual Circuit capability is available on various Skyline Lighting fixtures. Look for the  symbol throughout this catalog or consult the factory.

FEATURES:

- ▶ Sign housings featuring steel, plastic or die cast aluminum are designed to be attractive, durable and long lasting.
- ▶ State of the art Light Emitting Diode (LED) technology is more than bright enough to meet NFPA and standard UL924 light level requirements.
- ▶ Red or Green lettering is available.
- ▶ Dual voltage for 120 and 277 volt circuits.



New York City Approved Products

New York City approved products include steel, cast aluminum and edge lit exit signs as well as steel emergency lights. All meet National Electrical Code, NFPA Life Safety Code, standard UL924 and have a New York City Calendar number. A full representation of New York City approved products appears later in this section.

Look for the  Symbol throughout this catalog indicating NEW YORK CITY APPROVED availability.



For complete catalogs, specification sheets and other skyline products, please visit us online.



www.skylinelighting.com

SELF DIAGNOSTICS

Automatically oversee the function and maintenance of the emergency lighting system. It automatically notifies you of any trouble with the system. When installed, it continuously monitors the system lamps, battery, and charging circuits to make certain they are operating properly.

Each day it momentarily tests the transfer system and the lamp integrity. Once each 30 days it tests the transfer system and lamp integrity for a one minute period. Once every six months it runs a full 30 minute test. This insures that the battery is kept fresh and fully charged for use in an emergency situation.


A push test switch on the unit also allows manual initiation of a sequence of 1 minute, 5 minute, 30 minute or 60 minute tests. This provides for the ability to program a 90 or 120 minute test.

Self diagnostics will also work with your fire alarm system. It can work with a flashing and /or audible sign option.

SELF DIAGNOSTIC FEATURES:

- ▶ Indicates charger malfunction.
- ▶ Audible alarm signals any alarm condition.
- ▶ Four LEDs continuously indicate the system status.
- ▶ Exercise battery automatically and prolongs battery life.
- ▶ Manual test capability allows you to run annual 90 minute tests easily.
- ▶ Charging system can charge gel-cell or NiCad batteries and charges in constant voltage or constant current mode as required.
- ▶ Low battery disconnect with lockout feature and brown out protection is standard.



Self Diagnostics are available on various Skyline Lighting fixtures. Look for the  symbol throughout the catalog or consult the factory.

COMBO LED EXIT/ EMERGENCY LIGHTING

Model SKY JR

Combination LED energy saving exit sign and emergency lighting unit in a smaller more compact design.

FEATURES:

- ▶ Completely self-contained.
- ▶ LED lamp life of 25 years.
- ▶ Push to test switch.
- ▶ Automatic, low voltage disconnect (LVD).
- ▶ Universal transformer for 120 or 277 VAC operation.
- ▶ Universal mounting canopy for top installation.
- ▶ 6-volt pure lead, maintenance-free battery.
- ▶ Dimensions: 12.25"L (20.5"L with lamps) x 9.75"H x 2"D



ORDER INFO	Catalog Model #	Canopy	# of Faces	Letter Color	Housing Color	Warranty
	SKY JR	U - universal mounting canopy included	1 - Single Face 2 - Double Face Universal	R - Red G - Green	W - White B - Black	Yes

* Heads adjust from top to side

EMERGENCY / ADJUSTABLE EMERGENCY



FEATURES:

- ▶ Long life, energy saving LED lamps
- ▶ Injection molded, high impact, thermoplastic construction
- ▶ Snap-fit faceplate installs without the use of tools
- ▶ Field replaceable chevron directional indicator knockouts
- ▶ Integral wiring channels to facilitate installation
- ▶ Universal mounting pattern knockout in backplate for J-box mounting
- ▶ Snap-fit canopy (included) enables speedy top mounting
- ▶ Universal single face and double face (extra faceplate included)
- ▶ Dual voltage 120/277 VAC operation
- ▶ Maintenance-free 6V sealed lead acid battery (optional)
- ▶ Includes two 6V, 5.4W adjustable emergency lighting heads

ORDER INFO	SERIES	# of Faces	Letter Color	Housing Color	Options
	SKY0409	Universal	R - Red G - Green	W - White B - Black	Blank - None SD - Self-Diagnostic RC - Remote Capable

(UL Listed and complying with latest codes and performance standards including UL924)

COMBO INCANDESCENT EXIT/ EMERGENCY UNIT

Model CIBX

A combination exit and emergency lighting unit in one clean, low profile and modern design.

FEATURES:

- ▶ Universal mounting canopy for top installation.
- ▶ Push to test switch.
- ▶ 6-Volt premium grade, pure lead battery.
- ▶ Environmentally-coated, solid state charger.
- ▶ Automatic, low voltage disconnect (LVD).
- ▶ Universal transformer for 120 or 277 VAC operation.
- ▶ Standard with two fully adjustable, glare-free lighting heads.
- ▶ Injection-molded, V-0 flame retardant, high impact, thermoplastic housing.
- ▶ Charge rate/power LED indicator light.
- ▶ 130-Volt, 7 watt, long life exit sign lamps.



Heads rotate 180°+ for maximum field flexibility.

ORDER INFO	Series	Canopy	# of Faces	Letter Color	Housing Color	READY SHIP MODELS
	CIBX	U - universal mounting canopy included	1 - Single Face 2 - Double Face	R - Red G - Green	W - White B - Black	Model #CIBXUIRW Model #CIBXUIGW

COMBO LED EXIT/EMERGENCY LIGHTS

Model SKY

Combination LED energy saving exit sign and emergency lighting unit in one compact, modern design.

FEATURES:

- ▶ Completely self-contained.
- ▶ Energy consumption of less than 4 watts.
- ▶ LED lamp life of 25 years.
- ▶ Push to test switch.
- ▶ 6-Volt pure lead, maintenance-free battery.
- ▶ Universal mounting canopy for top installation.
- ▶ Automatic, low voltage disconnect (LVD).
- ▶ Universal transformer for 120 or 277 VAC operation.
- ▶ Standard with two fully adjustable, glare-free lighting heads.
- ▶ Injection-molded, V-0 flame retardant, high impact, thermoplastic housing.
- ▶ Damp location rated.



Heads rotate 180°+ for maximum field flexibility.

ORDER INFO	Series	Canopy	Letter Color	Housing Color	Warranty	Ready Ship Models
	SKY	U2 - universal mounting canopy included	R - Red G - Green	W - White B - Black	Yes	#SKYU2RW

INCANDESCENT

Model IX and IBX

Economy incandescent exit signs available in either AC Only or Battery Backup



FEATURES:

- ▶ AC only or self-powered models.
- ▶ Universal 120/277 VAC operation on IX Model.
- ▶ Damp location rated.
- ▶ Universal canopy included.
- ▶ 120 Volt longlife exit sign lamps.
- ▶ Universal K/O chevrons.

ORDER INFO	Series	Canopy	# of Faces	Letter Color	Housing Color	READY SHIP MODELS
	AC ONLY MODEL IX					
	IX	U - universal mounting	1 - Single Face	R - Red	W - White	Model IXU1RW
			2 - Double Face	G - Green	B - Black	Model IXU2RW Model IXU1GW
	BATTERY BACKUP MODEL IBX					
	IBX	U - universal mounting	1 - Single Face	R - Red	W - White	Model IBXU2GW
			2 - Double Face	G - Green	B - Black	Model IBXU2RW

LED EXIT SIGNS

Model SLX

Slim and low profile LED exit sign provides a crisp, clean look and excellent energy savings.

FEATURES:

- ▶ Completely self-contained., fully automatic operation.
- ▶ Compact, low profile design in neutral finish.
- ▶ Push to test switch.
- ▶ Automatic, low voltage disconnect (LVD).
- ▶ 120 or 277 VAC operation.
- ▶ Injection-molded, V-0 flame retardant, high impact, thermoplastic housing.
- ▶ Charge rate/power LED indicator light.
- ▶ Energy consumption of less than 4 watts for red letters and less than 2 watts for green letters. LED lamp life of 25 years plus.
- ▶ Damp location rated.
- ▶ Universal mounting canopy for side, back or top.
- ▶ Standard AC and emergency units available.
- ▶ Ni-cad battery on emergency (EM) units.



ORDER INFO	Series	Canopy	# of Faces	Letter Color	Housing Color	Battery Backup	Damp Location	READY SHIP MODELS
	SLX	U2 - Universal mounting canopy included	Universal	R - Red G - Green	W - White B - Black	EM	Yes	#SLXU2RW (AC only) #SLXU2RW-EM (Battery Backup)

EXIT SIGNS – SELF-LUMINOUS

Model SXU

Tritium Self-Luminous FREE Energy for 10-20 years!

Self-Luminous exit signs are the most reliable exit signs offered today. They require no external energy source, no electrical wiring and batteries and are always ready to provide an effective, maintenance free exit marking system. Your first cost is your final cost!

FEATURES:

- ▶ No electricity, no batteries.
- ▶ Explosion proof, weatherproof.
- ▶ No maintenance.
- ▶ Easy installation, no wires.
- ▶ Letter-shaped light tubes give best light in the industry.
- ▶ Concealed mounting.
- ▶ Suitable for floor proximity mounting.



ORDER INFO	Series	# of Faces	Face Color	Housing Color	Life in Years
	SXU	1 - Single	R - Red	W - White	10 years
		2 - Double	G - Green	B - Black	15 years
				A - Brushed Aluminum	20 years

Example Catalog #SXUIRBI5

COMBO LED EXIT/EMERGENCY LIGHTING

Model WLSLX

LED series exit signs feature an enclosure resistant to corrosive atmospheres, non-hazardous dust environments, water spray and splashing water.



FEATURES:

- ▶ Removable directional indicators.
- ▶ Extremely low operating costs.
- ▶ 25-year light source life expectancy.
- ▶ AC only or self-powered models.
- ▶ Universal 120/277 VAC operation.
- ▶ Meets NFPA Life Safety 101, NEC, OSHA, NEC, Local and State Codes.
- ▶ ABS, corrosion resistant UV Stabilized enclosure.
- ▶ Wet location listed



ORDER INFO	Catalog Model #	Letter Color	Emergency Operation	Lamp Type	Warranty
	WLSLX	Red/Green	AC	LED	Yes
	WLSLX-DH	Red/Green	EM 90-Min	LED	Yes

EDGE LIT LED EXIT SIGNS

Model REDG - Recessed

Offering precise engineering for architectural excellence to truly enhance interior spaces.



FEATURES:

- ▶ Compact, low-profile design.
- ▶ Energy consumption of less than 3 watts for AC only and less than 5 watts for battery backup units.
- ▶ Emergency battery backup model (EM) is completely self-contained.
- ▶ Field installable directional indicators.
- ▶ Standard AC and emergency units available.
- ▶ AC on indicator light and test switch (EM units only).
- ▶ Sealed lead battery on emergency (EM) units.
- ▶ 120/277 volt operation.
- ▶ Unit also available for drywall installation!



These units are available in New York approved 8-inch letters - consult factory

Series	# of Faces	Panel Color	Housing Color	Operation
REDG	1 - Single Face	RC - Red on clear	W - White	Blank - AC only
	2 - Double Face	GC - Green on clear	B - Black	EM - Battery Backup
			A - Anodized Aluminum	

RECESSED MOUNT UNIT - Example Catalog #REDG1RCAEM

CAST ALUMINUM LED UNIT & FACE PLATE

Models EXD (Unit) & EXDFP (Face Plate)

LED Cast Aluminum series utilizes a unique illumination design in an architecturally pleasing housing.

FEATURES:

- ▶ AC only or self-powered models.
- ▶ LED energy savings.
- ▶ Damp location rated.
- ▶ Universal canopy included.
- ▶ Curved design.
- ▶ Spec grade.
- ▶ Universal K/O chevrons.
- ▶ Universal 120/277 VAC operation on all exits.



These units are available in New York approved 8-inch letters - consult factory



Series	# of Faces	Letter Color	Housing Color	Face Color	Operation Color
EXD	Single Face	R - Red G - Green	A - Brushed Aluminum B - Black W - White	A - Brushed Aluminum B - Black W - White	EM Battery Backup Blank - AC Only

Example Catalog #EXD1RBAEM

Series	Letter Color	Face Color
EXDFP	R - Red G - Green	A - Brushed Aluminum B - Black W - White

Example Catalog #: EXDFPRA

EDGE LIT LED EXIT SIGNS

Model EDG - Surface Mount



These units are available in New York approved 8-inch letters - consult factory



Series	# of Faces	Panel Color	Housing Color	Operation
EDG	1 - Single Face	RC - Red on clear	B - Black	Blank - AC only
	2 - Double Face	GC - Green on clear	W - White	EM - Battery Backup
			A - Aluminum	

SURFACE MOUNT UNITS - Example Catalog #EDGUICVEM
UNIVERSAL MOUNTING CANOPY INCLUDED

RECESSED EMERGENCY LIGHT

Model SKYGR-RL



- ▶ Concealed, compact, flush mount design with halogen lamp technology.
- ▶ Completely self contained.
- ▶ Adjustable aiming angle.

EXIT SIGNS - City of Chicago Approved

Model CH and CHB

Economy incandescent exit signs available in either AC Only or Battery Backup.



- ▶ For Arrow Configuration and Special Wording, Consult Factory.
- ▶ Fluorescent also available
- ▶ Specify 120V or 277V

AC ONLY MODEL - Example Catalog #CHU2RW

Series	Canopy	# of Faces	Letter Color	Housing Color
CH	U - universal mounting canopy included	1 - Single Face 2 - Double Face	R - Red G - Green	W - White B - Black

BATTERY BACKUP MODEL - Example Catalog #CHBU2RW

Series	Canopy	# of Faces	Letter Color	Housing Color
CHB	U - universal mounting canopy included	1 - Single Face 2 - Double Face	R - Red G - Green	W - White B - Black

ORDER INFO

EMERGENCY LIGHTING UNIT

Model CHX

City of Chicago approved emergency lighting fixture has low profile look and is easy to install. It is completely self-contained and fully automatic.

FEATURES:

- ▶ Heavy 20 gauge steel construction
- ▶ 120/277 volt input standard
- ▶ Powder coated durable white finish
- ▶ PAR 36 type lamp heads
- ▶ Low voltage disconnect
- ▶ Brownout Protection standard
- ▶ Other wattages available



MODEL CH - 6 Volt Units

Catalog Model #	Emergency Operation	Voltage Input	Lamp Wattage	Battery Voltage	Damp Location	Warranty
CHXTR	2 Hrs	120V/277V	2 x 12W	6V	Yes	Yes

ORDER INFO

EXIT SIGNS - City of New York Approved

Model NY

City of New York Approved LED exit signs are efficient and easy to install. Available in battery backup and AC Only models. Units are also available with emergency lighting heads for combination exit/emergency lighting capability.



NY LED EXIT LIGHT - Example Catalog #NYSX1REM

Product Family	# of Faces	Letter Color	Housing Color	Operation
NYSX	U-Universal	R - Red B - Black	W - White B - Black	EM - Battery Backup Blank - AC Only

COMBO NY LED EXIT/EMERGENCY LIGHT - Example Catalog #NYSKY1RW3

Product Family	# of Faces	Letter Color	Housing Color	# of Heads
NYSKY	1 - Single	R - Red B - Black	W - White B - Black	3 - Heads

NY Combos supplied with 12-watt lamp heads

ORDER INFO

EMERGENCY LIGHTING UNIT

Model NY

City of New York approved heavy duty emergency lighting unit is efficient and easy to install. It is completely self-contained and fully-automatic.

FEATURES:

- ▶ Heavy 20 gauge steel construction.
- ▶ 120/277 volt input standard.
- ▶ Powder coated durable white finish.
- ▶ PAR 36 type lamp heads.
- ▶ Low voltage disconnect.
- ▶ Brownout Protection standard.



MODEL NYH - Example Catalog #NYHDX-6-3-27

Series	Voltage	# of Heads	Capacity	Lamp Wattage	Options
NYHDX	6-6V	2	18-18W	9	Consult Factory
NYHDX	6-6V	3	27-27W	9	Consult Factory
NYHDX	12-12V	3	50-50W	12	Consult Factory

ORDER INFO

EMERGENCY LIGHTING UNIT

Model XTR

Decorative and economical unit has modern appearance and low maintenance.

FEATURES:

- ▶ Completely self-contained.
- ▶ Fully Automatic Operation.
- ▶ Compact, low profile design in neutral finish.
- ▶ Universal mounting plate
- ▶ Push to test switch.
- ▶ Listed for damp location.
- ▶ 6-Volt, pure lead, maintenance-free battery.
- ▶ Environmentally-coated solid state charger.
- ▶ Automatic, low voltage disconnect (LVD).
- ▶ Universal transformer for 120 or 277 VAC.



ORDER INFO	Catalog Model #	Emergency Operation	Voltage Input	Lamp Wattage	Battery Voltage	Damp Location	Warranty
	XTR-1	90 Min	120/277V	2 x 5.4W	6V	Yes	Yes
	XTR-1B (Black)	90 Min	120/277V	2 x 5.4W	6V	Yes	Yes
	XTR-1C (w/Cord)	90 Min	120/277V	2 x 5.4W	6V	Yes	Yes

EMERGENCY LIGHTING UNIT

Model XTHO

Compact Emergency Lighting Unit has remote capacity for up to two additional remote lighting fixtures.

FEATURES:

- ▶ Completely self contained.
- ▶ Fully automatic operation.
- ▶ Compact, low profile design in neutral finish.
- ▶ Universal mounting plate
- ▶ Push to test switch.
- ▶ Listed for damp location.
- ▶ 6-Volt, pure lead, maintenance-free battery.
- ▶ Environmentally-coated, solid state charger.
- ▶ Automatic, low-voltage disconnect (LVD).
- ▶ Universal transformer for 120/277 VAC.
- ▶ Injection-molded, V-O flame retardant, high impact, thermoplastic housing.
- ▶ Charge rate/power on LED indicator light.



▶ Also available in black

ORDER INFO	Catalog Model #	Watts for 1 1/2 Hrs.	Total Connected Heads/Fixtures**			Voltage	Damp Location	Warranty
			4 Hrs	2 Hrs	1 1/2 Hrs			
	XTHO	22	6	2	3	4	Yes	Yes

** based on 5.4 watt lamps

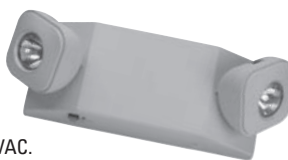
EMERGENCY LIGHTING UNIT WITH REMOTE CAPACITY

Model XTR-HO

Modern design with "EZ" install back plate and MR16 Halogen lamps for precise, clean illumination, & remote capable.

FEATURES:

- ▶ Completely self contained.
- ▶ Fully automatic operation.
- ▶ Push to test switch.
- ▶ Listed for damp location.
- ▶ Universal transformer for 120/277 VAC.
- ▶ Compact, low profile design in neutral finish.
- ▶ 6-Volt, pure lead, maintenance-free battery
- ▶ Environmentally-coated, solid state charger.
- ▶ Automatic, low-voltage disconnect (LVD).
- ▶ Charge rate/power on LED indicator light.
- ▶ Universal mounting plate with "EZ" Quick Connect for rapid labor saving installation.
- ▶ Optional self-diagnostic/self-test feature offers the ultimate in worry free maintenance and reliability.



ORDER INFO	Catalog Model #	Watts for 1 1/2 Hrs.	Total Connected Heads/Fixtures**			Voltage	Warranty
			4 Hrs	2 Hrs	1 1/2 Hrs		
	XTR-HO	22	2	3	4	6	Yes

** Based on 5 watt lamps

EMERGENCY LIGHTING UNIT

Model XTR-16

Modern design with "EZ" install back plate and MR16 Halogen lamps for precise, clean illumination.

FEATURES:

- ▶ Completely self contained.
- ▶ Push to test switch.
- ▶ Listed for damp location.
- ▶ Universal transformer for 120/277 VAC.
- ▶ Automatic, low-voltage disconnect (LVD).
- ▶ Compact, low profile design in neutral finish.
- ▶ 6-Volt, pure lead, maintenance-free battery
- ▶ Environmentally-coated, solid state charger.
- ▶ Universal mounting plate with "EZ" Quick Connect for rapid labor saving installation.
- ▶ Optional self-diagnostic/self-test feature offers the ultimate in worry free maintenance and reliability.



ORDER INFO	Catalog Model #	Emergency Operation	Voltage Input	Lamp Wattage	Battery Voltage	Remote Capacity	Warranty
	XTR-16	90 Min.	120V/277V	2x5W	6V	No	Yes
	XTR-16-B	90 Min.	120V/277V	2x5W	6V	No	Yes

EMERGENCY LIGHTING UNIT

Model XTWL-2 Wet Location Rated

Featuring an enclosure which is ideal for wet locations, resistant to corrosive atmospheres, non-hazardous dust environments, water spray or splashing water.



FEATURES:

- ▶ ABS, corrosion resistant UV Standard enclosure.
- ▶ Dual 120 or 277 VAC input, field selectable.
- ▶ 1 1/2 hr. of light to an end battery voltage of 87 1/2% of nominal voltage.
- ▶ Automatic brownout feature.
- ▶ Solid-state charging circuit.
- ▶ Solid-state line-latched low voltage disconnect provides 100% load disconnect protection to guard against battery deep discharge.
- ▶ Short circuit and overload protection on DC output circuit.
- ▶ Sealed momentary test switch.
- ▶ Sealed AC ready light.



ORDER INFO

Catalog Model #	Emergency Operation	Voltage Input	Lamp Wattage	Battery Voltage
XTWL-2	90 Min	120V/277V	2 x 7.2W	6V

Optional Internal Heater Available

RECESSED TWIN HEAD EMERGENCY LIGHTING UNIT

Model XTR-7

Unit mounts flush with ceiling for a concealed, unobtrusive look.



FEATURES:

- ▶ Completely self contained.
- ▶ Compact, flush mount design.
- ▶ Mounting bar hangers included.
- ▶ Large battery for remote capacity standard.
- ▶ Push to test switch.
- ▶ 6-Volt, pure lead, maintenance-free battery
- ▶ Environmentally-coated, solid state charger.
- ▶ Automatic, low-voltage disconnect (LVD).
- ▶ Universal transformer for 120/277 VAC.
- ▶ Charge rate/power on LED indicator light.
- ▶ Injection molded, V-0 flame retardant, high impact, thermoplastic lighting heads.
- ▶ Optional self-diagnostic/self test feature offers the ultimate in worry free maintenance and reliability.



ORDER INFO

Catalog Model #	Emergency Operation	Lamp Wattage	Battery Voltage	Remote Capacity	Warranty
XTR-7	90 Min. Plus	7.2W	6V	Yes	Yes

EMERGENCY LIGHTING UNIT

Models HDX 6 Volt and HDX 12 Volt

Heavy Duty emergency lighting unit has remote capability and is efficient and easy to install. It is completely self-contained and fully-automatic.

FEATURES:

- ▶ Charge rate/power on LED indicator light.
- ▶ Compact, low profile design in neutral finish.
- ▶ Environmentally-coated, solid state charger.
- ▶ Automatic, low-voltage disconnect (LVD).
- ▶ Universal transformer for 120/277 VAC.
- ▶ 6-Volt, pure lead, maintenance-free battery with 5 year expected life.
- ▶ Standard with two fully adjustable, glare-free heads.
- ▶ Push to test switch.



ORDER INFO

6 VOLT UNITS WITH REMOTE CAPABILITIES

Catalog Model #	Watts for 1 1/2 Hrs.	Voltage	Total Connected Heads/Fixtures		
			4 Hrs	2 Hrs	1 1/2 Hrs
HDX6-50	50	6	2*	4*	6*
HDX6-100	100	6	4*	9*	12*

12 VOLT UNITS WITH REMOTE CAPABILITIES

Catalog Model #	Watts for 1 1/2 Hrs.	Voltage	Total Connected Heads/Fixtures		
			4 Hrs	2 Hrs	1 1/2 Hrs
HDX12-50	50	12	2*	3*	5*
HDX12-100	100	12	4*	7*	10*

* Consult factory for dimensions.

EMERGENCY LIGHTING UNIT

Model XT

Compact and economical unit installs easily and has a low profile appearance.

FEATURES:

- ▶ Completely self contained.
- ▶ Fully automatic operation.
- ▶ Push to test switch.
- ▶ Listed for damp location.
- ▶ Universal transformer for 120/277 VAC.
- ▶ Charge rate/power on LED indicator light.
- ▶ Compact, low profile design in neutral finish.
- ▶ 6-Volt, pure lead, maintenance-free battery with 10-year expected life.
- ▶ Environmentally-coated, solid state charger.
- ▶ Automatic, low-voltage disconnect (LVD).
- ▶ Standard with two 5.4 watt, glare-free lamps.
- ▶ Injection-molded, V-0 flame retardant, high impact, thermoplastic housing.



ORDER INFO

Catalog Model #	Emergency Operation	Voltage Input	Lamp Wattage	Battery Voltage	Warranty
XT	90 Min.	120V/277V	2x5.4v	6V	Yes
XTB (Black)	90 Min.	120V/277V	2x5.4V	6V	Yes
XTC (w/Cord)	90 Min.	120V/277V	2x5.4V	6V	Yes

ACCESSORIES

Remote Lamp Heads

Remote heads are available in either 6 Volt or 12 Volt configurations and several wattage options. Outdoor weatherproof remote heads (WP) are also available. Order the correct voltage and wattage combination to fit your application.

RLH1



RLH1-WP*



RLH2



ORDER INFO

Catalog	# of Heads	Voltage	Wattage
RLH1-6V5	1	6 Volt	5.4
RLH1-6V7	1	6 Volt	7.2
RLH1-6V9	1	6 Volt	9
RLH2-6V5	2	6 Volt	5.4
RLH2-6V9	2	6 Volt	9
RLH1-12V7	1	12 Volt	7.2
RLH2-12V12	2	12 Volt	12
RLH2-12V7	2	12 Volt	7.2
RLH2-12V12	2	12 Volt	12
RLH1-WP6V7*	1	6 Volt	7.2
RLH1-WP6V9*	1	6 Volt	9
RLH1-WP12V7*	1	12 Volt	7.2
RLH1-WP12V12*	1	12 Volt	12
RLH2-WP-6V7	2	6 Volt	7.2

*Weatherproof

Polycarbonate Vandal/Environmental Shield Guard

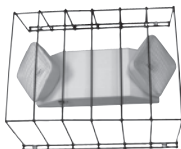


ORDER INFO

Model #	Dimensions	For Use with Model #
LS1	15"H x 22"L x 5"D	XTR, XT, XTH0, IX, IBX, SLX, EXD
LS3	15"H x 30.5"L x 7"D	CIBX, SKY

*Other sizes available

Wire Guard



ORDER INFO

Model #	For Use with Model #	Dimensions
WG-1	XTR, XT, XTH0, IX, IBX, SLX, EXD	13.5" H x 15" W x 6" D
WG-3	CIBX, SKY	13.5" H x 30" W x 6" D

REMOTE LAMP HEADS

Model XTR-RH-16

Modern design with MR16 halogen lamps for precise, clean illumination.



ORDER INFO

Catalog Model #	# of Heads	Voltage	Wattage
XTR-RH-16-1	1	6 Volt	5
XTR-RH-16-2	2	6 Volt	5

LIGHTING RETROFITS

Model XFR-HW and XFG-HW – Hard Wire Units



FEATURES:

- ▶ For 120V or 277V applications.
- ▶ 2.8 watts per kit.
- ▶ Kits come complete with mounting bracket & double face tape.

Model XFR and XFG – Screw In Units



FEATURES:

- ▶ For 120V applications.
- ▶ 2.8 watts per kit.
- ▶ Socket adapters supplied. (for signs with bayonet, intermediate or candelabra bases).
- ▶ Each unit is 5 1/8" tall by 1 5/8" wide. (Add 1/8" when using adapters).



ORDER INFO

Kit #	Installation	Color	For Use With	Watts per Kit
XFR-HW	Hardwire	Red	120/277V Applications	2.8 W
XFG-HW	Hardwire	Green	120/277V Applications	2.8 W
XFR	Screw In	Red	120V Applications	2.8 W
XFG	Screw In	Green	120V Applications	2.8 W

EMERGENCY LIGHTING UNIT

Explosion Proof - Model EPU

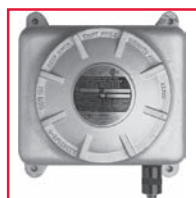
Series EPU explosion proof lighting systems are a completely self-contained, maintenance free battery-powered emergency lighting system designed to allow safe operation of the battery and electronics in the classified areas noted above. These systems feature an explosion proof cabinet and spin-off gasket cover, each constructed of one-piece heavy gauge corrosion resistant copper-free cast aluminum to prevent propagation of internally generated arcs into the hazardous atmosphere. A wide variety of fixture and exit configurations is available for mounting either directly to the housing or remotely.

AGENCY APPROVAL

Meets the illumination requirement of NFPA Life Safety Code 101, 5-10.2.2. Certified and tested to standard UL924. ETL listed. Meets or exceeds NEC, OSHA and other state and local codes.

FEATURES:

- ▶ 90 minutes of emergency illumination.
- ▶ Dual voltage, 120 or 277, is field selectable.
- ▶ All electronic circuitry is solid state, no relays to fail or get dirty.
- ▶ Line latched low voltage disconnect protects against deep battery discharge.
- ▶ Circuit brownout protection works reliably in brown or power shortages.
- ▶ Charging technology is current limited for battery protection.
- ▶ Overload and short circuit protection with automatic reset is standard.
- ▶ AC lockout feature reduces installation time.
- ▶ Indicator light displays charger rate and readiness status.
- ▶ Momentary test switch.
- ▶ Long life, maintenance free lead calcium battery is standard.
- ▶ Premium nickel cadmium batteries are available by special order.



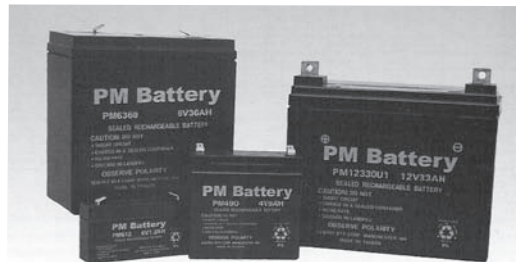
EXPLOSION PROOF 6V OR 12V EMERGENCY LIGHTING SERIES - Example #EPU-6-18-1EX-R

Catalog Series #	Wattage Capacity	Head Configurations	Options
EPU-EM Explosion Proof Emergency Light	18	1 XF	
EPU-EM Base Unit w/Emergency Lighting Configuration	25	2XF	
EPU-XT Base Unit w/Exit Sign Configuration	36	1EX 2EX	TD120 (Time delay module) R (Red lens within exit sign) G (Green lens within exit sign)
EPU-IEM/IXT Base Unit w/Emergency Lighting/Exit Sign configuration	50 72	1XFIEX 1XF2EX	TD277 (Time delay module)

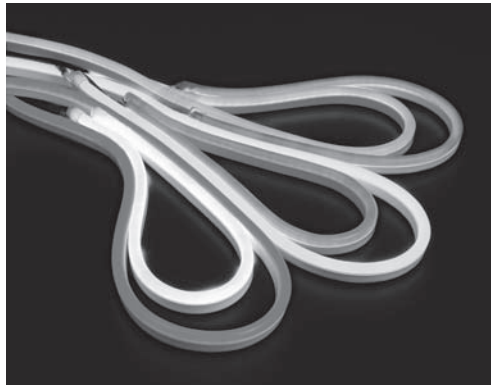
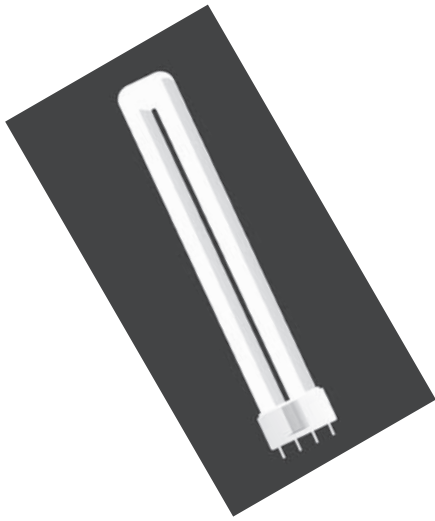
For operation in hazardous areas Class 1, Div. 1 & 2, Groups C & D; Class II, Div. 1 & 2, Groups E, F & G.

LEAD CALCIUM BATTERIES

Maintenance Free Rechargeable



MODEL NUMBER	NOMINAL VOLTAGE (V)	NOMINAL CAPACITY AH 20HR RATE	DIMENSIONS		HEIGHT OVER TERMINAL		TERMINAL STD	OPTION	WEIGHT (LBS)
			LENGTH	WIDTH	HEIGHT	TERMINAL			
PM260	2	6.0	1.97	1.34	3.94	4.25	F1		.97
PM430	4	3.0	3.50	1.34	2.31	2.55	F1		.95
PM445	4	4.5	1.93	2.09	3.70	3.86	F2	F1	1.55
PM490	4	9.0	4.01	1.73	3.75	3.91	F2		2.80
PM4100	4	10.0	4.01	2.00	3.75	3.91	F2		2.95
PM605	6	0.5	2.24	.55	1.97	1.97	W2		.20
PM610	6	1.0	2.00	1.65	2.00	2.20	F1		.60
PM612	6	1.2	3.82	0.98	2.01	2.32	F1		.70
PM620	6	2.0	2.95	2.01	2.09	2.29	F1		1.20
PM630	6	3.0	5.28	1.34	2.36	2.60	F1		1.54
PM631	6	3.1	2.56	1.25	3.82	4.10	F1		1.28
PM638	6	3.8	2.60	1.30	4.65	4.92	F1		1.63
PM640	6	4.5	2.76	1.77	3.98	4.21	F1	F1	1.89
PM665	6	6.5	3.82	2.20	4.05	4.05	F3	F1	2.75
PM670	6	7.0	5.95	1.34	3.70	4.02	F1	F2, F3	2.85
PM682	6	8.0	3.82	2.20	4.60	4.60	F1	WL	3.83
PM6100	6	10.0	5.95	1.97	3.70	4.02	F1	F2, F3	4.44
PM6121	6	12.0	5.95	1.97	3.70	4.00	F1	F2	4.65
PM6140	6	14.0	4.25	2.76	5.52	5.52	F3		4.79
PM6140-50P	6	14.0	4.25	2.76	5.52	5.52	Toy Plug/Fuse		4.79
PM6200	6	20.0	6.18	3.27	4.92	4.92	B1		8.85
PM6360	6	36.0	6.38	3.46	6.46	6.73	F2		13.85
PM61200	6	120.0	9.49	7.01	7.20	7.20	B2		43.30
PM830	8	3.0	5.25	1.44	2.47	2.69	F1		1.27
PM1208	12	0.8	3.78	0.98	2.42		WP		.80
PM1212	12	1.2	3.82	1.69	2.02	2.32	F1		1.39
PM1220S	12	2.0	5.91	.79	3.54	3.54	F1		1.68
PM1223	12	2.3	7.01	1.34	2.36	2.60	F1		2.07
PM1230	12	3.0	5.28	2.63	2.40	2.64	F1		2.64
PM1245	12	4.5	3.54	2.76	4.00	4.14	F1		3.83
PM1275	12	7.5	5.95	2.56	3.70	3.90	F1		5.94
PM12100	12	10.0	5.95	3.86	3.70	3.98	F1		8.65
PM12120	12	12.0	5.95	3.86	3.70	3.98	F2		8.90
PM12180	12	18.0	7.13	2.99	6.57	6.57	B1	F2	13.90
PM12260TB1	12	26.0	6.54	4.94	6.93	6.93	B1		20.90
PM12260	12	26.0	6.54	6.89	4.92	4.92	B1	F2	21.00
PM12330U1	12	33.0	7.68	5.12	6.38	7.28	B1	B2	25.59
PM12400	12	40.0	7.75	6.50	6.69	6.69	B2		30.9
PM12750	12	75.0	10.2	6.61	8.19	8.90	B1		49.78



COMPACT FLUORESCENT LAMPS



Model SKY13W-ODMS

- ▶ Power (w): 13W
- ▶ Lumens: 850
- ▶ Incandescent Equivalent: 65W
- ▶ Base Medium (E26)
- ▶ Available in temperatures 2700°K - 5000°K



Model SKY15W-ODSPDIM

- ▶ Power (w): 15W
- ▶ Lumens: 900
- ▶ Incandescent Equivalent: 75W
- ▶ Base: Medium (E26)
- ▶ Average Life: 10,000 Hrs



Model SKY18W-ODMS

- ▶ Power (w): 18W
- ▶ Lumens: 1200
- ▶ Incandescent Equivalent: 90W
- ▶ Base: Medium (E26)
- ▶ Available in temperatures 2700°K - 5000°K



Model SKY23W-ODSPDIM

- ▶ Power (w): 23W
- ▶ Lumens: 1600
- ▶ Incandescent Equivalent: 115W
- ▶ Base: Medium (E26)
- ▶ Average Life: 10,000 Hrs



Model SKY23W-ODMS

- ▶ Power (w): 23W
- ▶ Lumens: 1600
- ▶ Incandescent Equivalent: 115W
- ▶ Base: Medium (E26)
- ▶ Available in temperatures 2700°K - 5000°K



Model SKY26W-ODSP-3

- ▶ Power (w): 26/20/12W
- ▶ Lumens: 1560/1100/500
- ▶ Base: Medium (E26)
- ▶ Average Life: 10,000 Hrs
- ▶ 3-Way Spiral CFL Bulb

CASE QUANTITY ONLY

COMPACT FLUORESCENT LAMPS



Model SKY36W-ODS

- ▶ Power (w): 36W
- ▶ Lumens: 2400
- ▶ Incandescent Equivalent: 180W
- ▶ Base: Medium (E26)
- ▶ Average Life: 10,000 Hrs



Model SKY40W-ODSP-3

- ▶ Power (w): 40/26/15W
- ▶ Lumens: 2450/1600/800
- ▶ Base: Medium (E26)
- ▶ Average Life: 10,000 Hrs
- ▶ 3-Way Spiral CFL Bulb



Model SKY55W-ODS

- ▶ Power (w): 55W
- ▶ Lumens: 3600
- ▶ Base: Medium (E26)
- ▶ Average Life: 10,000 Hrs



Model SKY61LE-105

- ▶ Power (w): 105W
- ▶ Lumens: 7200
- ▶ Incandescent Equivalent: 525W
- ▶ Base: Medium (E26)
- ▶ Available in temperatures 2700°K - 6400°K



Model SKY7W-ODA

- ▶ Power (w): 7W
- ▶ Lumens: 450
- ▶ Incandescent Equivalent: 35W
- ▶ Base: Medium (E26)
- ▶ Average Life: 10,000 Hrs



Model SKY9W-ODGS

- ▶ Power (w): 9W
- ▶ Lumens: 500
- ▶ Incandescent Equivalent: 45W
- ▶ Base: Medium (E26)
- ▶ Average Life: 10,000 Hrs

Minimum order configurations may apply on certain temperatures.
For complete catalogs, specification sheets and other skyline products, please visit us online at www.skylinelighting.com

COMPACT FLUORESCENT LAMPS



Model SKY11W-ODJDR

- ▶ Power (w): 11W
- ▶ Lumens: 250
- ▶ Base: GU10
- ▶ Average Life: 10,000 Hrs
- ▶ JDR Type Bulb, replaces Halogen GU10.



Model SKY11W-ODPAR20

- ▶ Power (w): 11W
- ▶ Lumens: 380
- ▶ Incandescent Equivalent: 55W
- ▶ Base: Medium (E26)
- ▶ Average Life: 10,000 Hrs



Model SKY15W-ODPAR30

- ▶ Power (w): 15W
- ▶ Lumens: 660
- ▶ Incandescent Equivalent: 75W
- ▶ Base: Medium (E26)
- ▶ Average Life: 10,000 Hrs



Model SKY15W-ODR30

- ▶ Power (w): 15W
- ▶ Lumens: 650
- ▶ Incandescent Equivalent: 75W
- ▶ Base: Medium (E26)
- ▶ Average Life: 6,000 Hrs



Model SKY15W-ODR30DIM

- ▶ Power (w): 15W
- ▶ Lumens: 610
- ▶ Incandescent Equivalent: 75W
- ▶ Base: Medium (E26)
- ▶ Average Life: 6,000 Hrs



Model SKY23W-ODPAR38

- ▶ Power (w): 23W
- ▶ Lumens: 1050
- ▶ Incandescent Equivalent: 115W
- ▶ Base: Medium (E26)
- ▶ Average Life: 10,000 Hrs



Model SKY23W-ODR40DIM

- ▶ Power (w): 23W
- ▶ Lumens: 1050
- ▶ Incandescent Equivalent: 115W
- ▶ Base: Medium (E26)
- ▶ Average Life: 6,000 Hrs

CASE QUANTITY ONLY

COMPACT FLUORESCENT LAMPS



Model SKY61M-26

- ▶ Power (w): 26W
- ▶ Lumens: 1080
- ▶ Incandescent Equivalent: 130W
- ▶ Base: GU24
- ▶ Available in temperatures 2700°K - 6400°K



Model SKY61M-32

- ▶ Power (w): 32W
- ▶ Lumens: 1200
- ▶ Incandescent Equivalent: 160W
- ▶ Base: GU24
- ▶ Available in temperatures 2700°K - 6400°K



Model SKY61M-40

- ▶ Power (w): 40W
- ▶ Lumens: 2000
- ▶ Incandescent Equivalent: 200W
- ▶ Base: GU24
- ▶ Available in temperatures 2700°K - 6400°K



Model SKY61M-13

- ▶ Power (w): 13W
- ▶ Lumens: 900
- ▶ Incandescent Equivalent: 65W
- ▶ Base: GU24
- ▶ Available in temperatures 2700°K - 6400°K



Model SKY13W-ODSGU

- ▶ Power (w): 13W
- ▶ Lumens: 825
- ▶ Base: GU24
- ▶ Average Life: 10,000 Hrs
- ▶ Available in temperatures 2700°K - 5000°K



Model SKY18W-ODSGU

- ▶ Power (w): 18W
- ▶ Lumens: 1200
- ▶ Base: GU24
- ▶ Average Life: 10,000 Hrs
- ▶ Available in temperatures 2700°K - 5000°K



Model SKY26W-ODSGU

- ▶ Power (w): 26W
- ▶ Lumens: 1725
- ▶ Base: GU24
- ▶ Average Life: 10,000 Hrs
- ▶ Available in temperatures 2700°K - 5000°K

COMPACT FLUORESCENT LAMPS

Skyline Lighting Compact Fluorescent Bulbs greatly reduce energy and replacement costs over standard incandescent lamps. We are proud to offer a full line of compact fluorescent lighting products for use in a wide range of applications.



Model SKY13W-ODD

- ▶ Power (w): 13W
- ▶ Lumens: 860
- ▶ Base: GX-23-2
- ▶ Average Life: 10,000 Hrs
- ▶ Available in temperatures 2700°K - 4100°K



Model SKY13W-ODD-4P

- ▶ Power (w): 13W
- ▶ Lumens: 900
- ▶ Base: G24q1
- ▶ Average Life: 12,000 Hrs
- ▶ Available in temperatures 2700°K - 4100°K



Model SKY13W-ODS

- ▶ Power (w): 13W
- ▶ Lumens: 825
- ▶ Base: GX23
- ▶ Average Life: 10,000 Hrs
- ▶ Incandescent Equivalent: 65W
- ▶ Available in temperatures 2700°K - 5000°K



Model SKY13W-ODS-4P

- ▶ Power (w): 13W
- ▶ Lumens: 840
- ▶ Base: 2GX7
- ▶ Average Life: 12,000 Hrs
- ▶ Available in temperatures 2700°K - 4100°K



Model SKY18W-ODD

- ▶ Power (w): 18W
- ▶ Lumens: 1200
- ▶ Base: G24d2
- ▶ Average Life: 10,000 Hrs
- ▶ Available in temperatures 2700°K - 4100°K



Model SKY18W-ODD-4P

- ▶ Power (w): 18W
- ▶ Lumens: 1250
- ▶ Base: G24q2
- ▶ Average Life: 12,000 Hrs
- ▶ Available in temperatures 2700°K - 4100°K

CASE QUANTITY ONLY

COMPACT FLUORESCENT LAMPS



Model SKY9W-ODS

- ▶ Power (w): 9W
- ▶ Lumens: 600
- ▶ Base: G23
- ▶ Average Life: 10,000 Hrs



Model SKY9W-ODT2S

- ▶ Power (w): 9W
- ▶ Lumens: 520
- ▶ Incandescent Equivalent: 45W
- ▶ Base: Medium
- ▶ Available in temperatures 2700°K - 5000°K



Model SKY26W-ODD

- ▶ Power (w): 26W
- ▶ Lumens: 1800
- ▶ Base: G24d3
- ▶ Average Life: 10,000 Hrs
- ▶ Available in temperatures 2700°K - 4100°K



Model SKY42W-ODT

- ▶ Power (w): 42W
- ▶ Lumens: 3200
- ▶ Base: GX24q4
- ▶ Average Life: 12,000 Hrs
- ▶ Available in temperatures 3000°K - 4100°K



Model SKY26W-ODD-4P

- ▶ Power (w): 26W
- ▶ Lumens: 1800
- ▶ Base: G24q1
- ▶ Average Life: 12,000 Hrs
- ▶ Available in temperatures 2700°K - 4100°K



Model SKY26W-ODMS

- ▶ Power (w): 26W
- ▶ Lumens: 1750
- ▶ Incandescent Equivalent: 130W
- ▶ Base: Medium
- ▶ Available in temperatures 2700°K - 5000°K

CASE QUANTITY ONLY

COMPACT FLUORESCENT LAMPS



Model SKY26W-ODT

- ▶ Power (w): 26W
- ▶ Lumens: 1800
- ▶ Base: GX24q3
- ▶ Average Life: 12,000 Hrs
- ▶ Available in temperatures 3000°K - 4100°K



Model SKY32W-ODT

- ▶ Power (w): 32W
- ▶ Lumens: 2400
- ▶ Base: GX24q3
- ▶ Average Life: 12,000 Hrs
- ▶ Available in temperatures 3000°K - 4100°K



Model SKY5W-ODS

- ▶ Power (w): 5W
- ▶ Lumens: 250
- ▶ Base: G23
- ▶ Average Life: 10,000 Hrs
- ▶ Available in temperatures 2700°K - 4100°K



Model SKY7W-ODS

- ▶ Power (w): 7W
- ▶ Lumens: 400
- ▶ Base: G23
- ▶ Average Life: 10,000 Hrs
- ▶ Available in temperatures 2700°K - 4100°K



Model SKY13W-ODT2S

- ▶ Power (w): 13W
- ▶ Lumens: 825
- ▶ Incandescent Equivalent: 65W
- ▶ Base: Medium (E26)
- ▶ Available in temperatures 2700°K - 5000°K



Model SKY18W-ODT2S

- ▶ Power (w): 18W
- ▶ Lumens: 1100
- ▶ Incandescent Equivalent: 90W
- ▶ Base: Medium
- ▶ Available in temperatures 2700°K - 5000°K

CASE QUANTITY ONLY

COMPACT FLUORESCENT LAMPS



Model SKY23W-ODT2S

- ▶ Power (w): 23W
- ▶ Lumens: 1600
- ▶ Incandescent Equivalent: 115W
- ▶ Base: Medium (E26)
- ▶ Available in temperatures 2700°K - 5000°K



Model SKY26W-ODT2S

- ▶ Power (w): 26W
- ▶ Lumens: 1725
- ▶ Incandescent Equivalent: 115W
- ▶ Base: Medium (E26)
- ▶ Available in temperatures 2700°K - 5000°K



Model SKY35N-15

- ▶ Power (w): 15W
- ▶ Incandescent Equivalent: 75W
- ▶ Lumens: 910
- ▶ Base: Medium (E26)
- ▶ Available in temperatures 2700°K - 6400°K
- ▶ Adjustable light sensor allows for automatic operation and greater energy savings



Model SKY35N-20

- ▶ Power (w): 20W
- ▶ Incandescent Equivalent: 100W
- ▶ Lumens: 1250
- ▶ Base: Medium (E26)
- ▶ Available in temperatures 2700°K - 6400°K
- ▶ Adjustable light sensor allows for automatic operation and greater energy savings



Model SKY35N-23

- ▶ Power (w): 23W
- ▶ Incandescent Equivalent: 115W
- ▶ Lumens: 1350
- ▶ Base: Medium (E26)
- ▶ Available in temperatures 2700°K - 6400°K
- ▶ Adjustable light sensor allows for automatic operation and greater energy savings



Model SKY35N-25

- ▶ Power (w): 25W
- ▶ Incandescent Equivalent: 125W
- ▶ Lumens: 1560
- ▶ Base: Medium (E26)
- ▶ Available in temperatures 2700°K - 6400°K
- ▶ Adjustable light sensor allows for automatic operation and greater energy savings

CASE QUANTITY ONLY

COLD CATHODE LAMPS

Cold Cathode Compact Fluorescent Bulbs have proven reliable in such products as laptop displays, copiers, cell phones, and LCD television displays. Skyline Lighting Inc. is proud to offer this reliable, cost-effective and energy-efficient lighting technology for use in general lighting applications such as signs, sconces, marquees, accent lights etc.

This 3w cold cathode lamp is a suitable replacement for 20w incandescent lamps, even under flashing and cycling conditions.



Model AL3WCCFL

- ▶ Power (w): 3w
- ▶ Lumens: 140
- ▶ Voltage: 120v
- ▶ Frequency: 60hz
- ▶ Average Life: 20,000-25,000 hours
- ▶ Dimmable and Flashable
- ▶ 2 Year Warranty



Model SKY13W-CCFLT2-DIM

- ▶ Power (w): 13w
- ▶ Lumens: 500
- ▶ Average Life: 25,000 hours
- ▶ Dimmable and Flashable.
- ▶ Mini-Spiral Bulb.



Model SKY5W-CCFLT1A-DIM

- ▶ Power (w): 5w
- ▶ Lumens: 200
- ▶ Average Life: 25,000 hours
- ▶ Dimmable and Flashable.
- ▶ Clear or Frost finishes available.

CASE QUANTITY ONLY

COLD CATHODE LAMPS



Model SKY7W-CCFLT2-DIM

- ▶ Power (w): 7w
- ▶ Lumens: 250
- ▶ Average Life: 25,000 hours
- ▶ Dimmable and Flashable.
- ▶ Candle shaped bulb.



Model SKY8W-CCFLT1A-DIM

- ▶ Power (w): 8w
- ▶ Lumens: 350
- ▶ Average Life: 25,000 hours
- ▶ Dimmable and Flashable.
- ▶ Clear or Frost finishes available.



Model SKYCFB1

- ▶ Power (w): 4w
- ▶ Lumens (flux): 35
- ▶ Voltage: 110v-120
- ▶ Base: Medium E26
- ▶ Dimensions: 75.8mm H x 50mm W
- ▶ Average life: 25,000 hours



Model SKYCFB01

- ▶ Power (w): 5w
- ▶ Lumens (flux): 105
- ▶ Voltage: 110-120v
- ▶ Base: Medium E26
- ▶ Dimensions: 111.4mm H x 40mm W
- ▶ Average life: 25,000 hours



SKYCFP01

- ▶ Power (w): 5w
- ▶ Lumens (flux): 105
- ▶ Voltage: 110-120v
- ▶ Base: Medium E26
- ▶ Dimensions: 97.5mm H x 50mm W
- ▶ Average life: 25,000 hours



SKYCFG0B1

- ▶ Power (w): 5w
- ▶ Lumens (flux): 105
- ▶ Voltage: 110-120v
- ▶ Base: Medium E26
- ▶ Dimensions: 97.5mm H x 50mm W
- ▶ Average life: 25,000 hours

CASE QUANTITY ONLY

LED DOWNLIGHTING

Skyline Lighting's LED lamps are designed for use in architectural, entertainment, landscape and display applications and offer the latest in energy saving and environmentally friendly lighting technology. All of our downlighting products are energy efficient, environmentally friendly and non-dimmable.



Model SKYDL10

- ▶ 18 LEDs
- ▶ GU10 Base
- ▶ Voltage: 12v
- ▶ Power Usage: 2 Watts



Model SKYDL16

- ▶ 18 LEDs
- ▶ MR16 Base
- ▶ Voltage: 12v
- ▶ Power Usage: 2 Watts



Model SKYDL20

- ▶ 24 LEDs
- ▶ Medium Base
- ▶ Voltage: 120v
- ▶ Power Usage: 2 Watts
- ▶ Capable of emitting multiple colors



Model SKYDL30

- ▶ 48 LEDs
- ▶ Medium Base
- ▶ Voltage: 120v
- ▶ Power Usage: 3 Watts
- ▶ Capable of emitting multiple colors



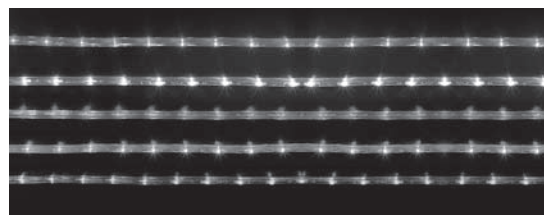
Model SKYDL38

- ▶ 60 LEDs
- ▶ Medium Base
- ▶ Voltage: 120v
- ▶ Power Usage: 4.5 Watts
- ▶ Capable of emitting multiple colors

SEE YELLOW SECTION FOR ADDITIONAL LAMPS

LED ROPE AND FLEX LIGHTING

Skyline Lighting's Rope Lights are available in 150 ft. rolls only. Comes with 5 power connectors, 50 mounting clips, 5 splice connectors and 5 end caps.



Model LED-DL (H) - 2W

- ▶ Ø13mm 2-Wires Round LED Rope Light (Horizontal)

Model LED-DL16 (H) - 2W

- ▶ Ø16mm 2-Wires Round LED Rope Light (Horizontal)

Model LED-ML (H) - 2W

- ▶ Ø10mm 2-Wires Round LED Rope Light (Horizontal)

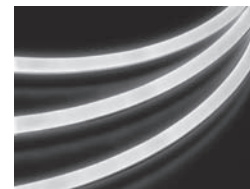
Above models all feature:

- ▶ Energy Efficient decorative lighting solution
- ▶ Long life and low power consumption with LED technology
- ▶ Available in 120v, 24v, 12v (150 ft. rolls)



Model LN-FX-C

- ▶ LED Neon-Flex (Color Jacket)
- ▶ Highly decorative color jacket (constant color day and night).
- ▶ Safe, bright, and cost-effective LED technology.
- ▶ Easy to install and maintain.



Model LN-FX-W

- ▶ LED Neon-Flex (Low Degradation White)
- ▶ Patented white LED and PVC housing reduces degradation rate by 20% over standard white LED fixtures.
- ▶ Safe, bright, and cost-effective LED technology.
- ▶ Easy to install and maintain.

LED LAMPS

Skyline Lighting's LED bulbs offer the latest in lighting technology to provide energy efficient, eco-friendly lighting solutions for a wide range of applications.

All Models Feature:

- ▶ High power, wide angle LED bulb
- ▶ Medium Base (e27/e26)
- ▶ 90% light output effect
- ▶ Energy efficient
- ▶ Environmentally friendly
- ▶ Suitable replacement for 25W incandescent bulbs

Model SKYLB50-13



Model SKYLB50-14



Model SKYLB50-16



Model SKYLB50-17



Model SKYLB50-18



Model SKYLB50-19



Model SKYLB50-48



Model SKYLB60-13



Model SKYLB60-15



Model SKYLB60-16



Model SKYLB60-19



Model SKYLB50-20



Model SKYLB60-22



Model SKYLB60-26



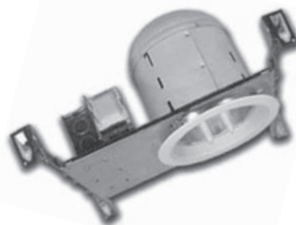
For additional information, please visit us online at www.skylinelighting.com

TABLE LAMP



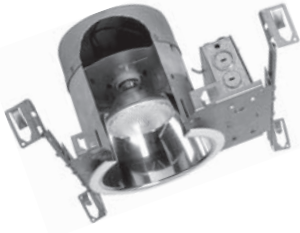
Model SKYTL7700

- ▶ 26 Watt/4100K Compact Fluorescent Bulb included.
- ▶ Energy star approved.
- ▶ Stylish, contemporary design.
- ▶ Available in three different finishes: White (above right), Brass (above left), and Resin.



RECESSED LIGHTING

Model SKY91CN



- ▶ Standard IC downlighting unit, dimensions: 6 1/2"W x 7 1/2"H
- ▶ For NEW WORK applications.
- ▶ Max 150W lamp with proper trim.
- ▶ Available with AIR TIGHT HOUSING.

Model SKY91CR



- ▶ Standard IC downlighting unit, dimensions: 6 1/2"W x 7 1/2"H
- ▶ For OLD WORK applications.
- ▶ Max 150W lamp with proper trim.
- ▶ Available with AIR TIGHT HOUSING.

Compatible Trims



SKY10
Fresnel Lens
8" OD • 60W/A19



SKY12
Open Trim - White
8" OD • 75W/R30 or PAR30



SKY12PB
Open Trim - Brass
8" OD • 75W/R30 or PAR30



SKY15
Eyeball White
8" OD • 75W/R30 or PAR30



SKY15PB
Eyeball - Polished
8" OD • 75W/R30 or PAR30



SKY17
Black Stepped Baffle
7" OD Wide Ring
75W/R30 or PAR30



SKY21
Black Stepped Baffle
8" OD Wide Ring
75W/R40 or PAR30



SKY22
Wall Wash Black Baffle
7" OD • 75W/R30 or PAR30



SKY24
Specular R-Lamp Reflector
Specify: Clear, Gold or Black
7" OD



SKY30
Black Stepped Baffle
Regressed Albalite • 7" OD
40W/A19



SKY31
Black Stepped Baffle
Regressed Eyeball • 7" OD • 75W/R30
Specify **W** for White Baffle



SKY34
White Stepped Baffle
7" OD • 75W/R30 or PAR30



SKY40
Albalite Shower
7" OD • 100W/A19

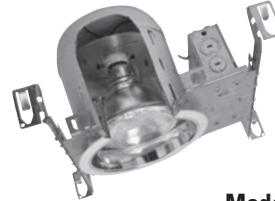


SKY41
Drop Opal Shower
8" OD • 60W/A19

RECESSED LIGHTING

STANDARD NON-IC DOWNLIGHTING

Model SKY7N



- ▶ Standard NON-IC downlighting unit dimensions: 6.5"W x 5.5"H
- ▶ For NEW WORK applications
- ▶ 3" clearance of insulation required.
- ▶ Adjustable housing for various ceiling thickness.

Model SKY7R



- ▶ Standard NON-IC downlighting unit, dimensions: 6-1/2"W x 7-1/2"H
- ▶ For OLD WORK or REMODEL applications.
- ▶ 3" clearance of insulation required.
- ▶ Up to 150W lamp with proper trim.

Compatible Trims



SKY10
Fresnel Lens
8" OD • 60W/A19



SKY14
Open Trim - White
8" OD • 150W/R40 or PAR38



SKY14PB
Open Trim - Brass
8" OD • 150W/R40 or PAR38



SKY15
Eyeball White
8" OD • 75W/R30 or PAR30



SKY15PB
Eyeball - Polished
8" OD • 75W/R30 or PAR30



SKY18
Black Stepped Baffle
7" OD • 150W/R40 or PAR38



SKY21
Black Stepped Baffle
8" OD Wide Ring
75W/R40 or PAR30



SKY22
Wall Wash Black Baffle
7" OD • 75W/R40 or PAR30



SKY23
Specular A-Lamp Reflector
7" OD • 100W/A19
Specify: Clear or Gold



SKY25
Specular R-Lamp Reflector
7" OD • 75W
Specify: Clear or Gold



SKY30
Black Stepped Baffle
Regressed Albalite
7" OD • 40W/A19



SKY31
Black Stepped Baffle
Regressed Eyeball • 7" OD • 75W/R30
Specify **W** for White Baffle



SKY33
Specular A-Lamp Reflector
7" OD • 100W/A19
Specify: Clear or Gold



SKY35
AT Clear Cone
7" OD • 90W/R40 or PAR30
Air Tight



SKY36
White Stepped Baffle
7" OD • 150W/R40 or PAR38



SKY40
Albalite Shower
7" OD • 100W/A19



SKY41
Drop Opal Shower
8" OD • 60W/A19

RECESSED LIGHTING

Model SKYHV300ICN



- ▶ 3" IC downlighting unit for NEW WORK applications.
- ▶ For DIRECT CONTACT with insulation.
- ▶ Housing adjusts to accommodate up to 2" thick ceilings.
- ▶ Max 50W MR16
- ▶ Dimensions 12.5"L x 14.875"D x 9.125"W

Model SKYHV300N



- ▶ 3" NON-IC downlighting unit for NEW WORK applications.
- ▶ For non-insulated ceiling or 3" space between housing and insulation.
- ▶ Max 50W/MR16
- ▶ Dimensions 12.125"L x 5.625"D x 7.75"W

Model SKYHV300R



- ▶ 3" NON-IC downlighting unit for OLD WORK or REMODEL applications.
- ▶ For non-insulated ceiling or 3" space between housing and insulation.
- ▶ Max 50W/MR16

Compatible Trims



SKYHV300C
Clear Reflector
4.5" OD
50W/MR16



SKYHV300G
Gold Reflector
4.5" OD • 50W/MR16



SKYHV303
White Stepped Baffle
4.5" OD • 50W/MR16



SKYHV304
Square Open Gimbal
50W/MR16



SKYHV305
Open Gimbal
4.5" OD
50W/MR16



SKYHV305C
Open Gimbal
4.5" OD
50W/MR16



SKYHV308
Albalite Shower
4.5" OD
50W/MR16



SKYHV330
Clear Adjustable Reflector
4.5" OD
50W/MR16

RECESSED LIGHTING

4 INCH MINI DOWNLIGHTING

Model SKY4ICN



- ▶ 4" IC mini downlighting unit dimensions: 4.5"W x 5.5"H
- ▶ For NEW WORK applications where low-plenum or 6" joists are present
- ▶ For DIRECT CONTACT with insulation.
- ▶ Available with AIR TIGHT HOUSING.

Model SKY4N



- ▶ 4" NON-IC mini downlighting unit dimensions: 4.5"W x 5.5"H
- ▶ For NEW WORK applications where low-plenum or 6" joists are present
- ▶ 3" clearance of insulation required.
- ▶ Available with AIR TIGHT HOUSING.

Model SKY4R



- ▶ 4" NON-IC mini downlighting unit dimensions: 4.5"W x 5.5"H
- ▶ For OLD WORK or REMODEL applications where low-plenum or 6" are present.
- ▶ 3" clearance of insulation required.
- ▶ Available with AIR TIGHT HOUSING.

Compatible Trims



SKY100
Specular Clear Reflector
5" OD • 50W/R20 or PAR20



SKY101
Specular Gold Reflector
5" OD • 50W/R20 or PAR20



SKY102
Specular Black Reflector
5" OD • 50W/R20 or PAR20



SKY103
Black Stepped Baffle
5" OD • 50W/R20 or PAR20



SKY104
Wall Wash
5" OD • 50W/R20 or PAR20



SKY105
Eyeball White
5" OD • 50W/R20 or PAR20



SKY106
Open Pinhole
5" OD • 50W/R20 or PAR20



SKY108
White Stepped Baffle
5" OD • 50W/R20 or PAR20



SKY109
Polished Brass Eyeball
5" OD • 50W/R20 or PAR20

RECESSED LIGHTING

Model SKYH500ICN

- ▶ 5" IC downlighting unit for NEW WORK applications.
- ▶ For DIRECT CONTACT with insulation.
- ▶ 7 1/2" height allows use in 2" x 8" joist construction.
- ▶ Max 75W R30/Par30 Lamp.

Model SKYH500ICR

- ▶ 5" IC downlighting unit for OLD WORK or REMODEL applications.
- ▶ For DIRECT CONTACT with insulation.
- ▶ Unit slips through 5 3/8" ceiling opening.
- ▶ Max 75W R30/Par30 Lamp.

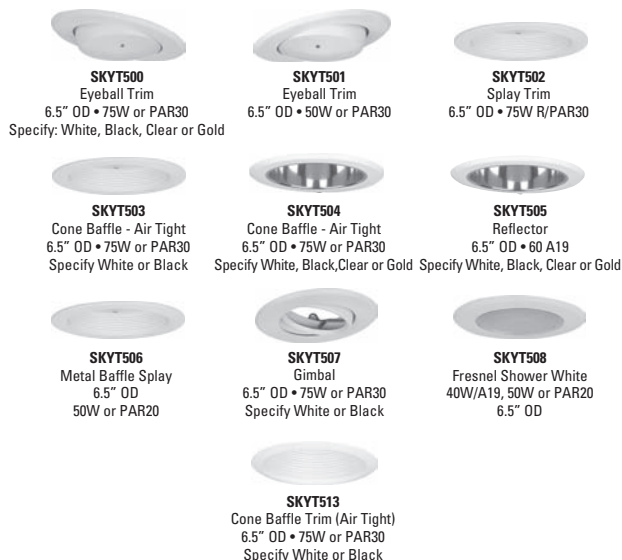
Model SKYH500N

- ▶ 5" NON-IC downlighting unit for NEW WORK applications.
- ▶ For non-insulated or 3" space between housing and insulation.
- ▶ 7 1/2" height allows use in 2" x 8" joist construction.
- ▶ Max 75W R30/Par30 Lamp.

Model SKYH500R

- ▶ 5" NON-IC downlighting unit for OLD WORK or REMODEL applications.
- ▶ For non-insulated or 3" space between housing and insulation.
- ▶ Unit slips through 5 3/8" ceiling opening.
- ▶ Max 75W R30/Par30 Lamp.

Compatible Trims



RECESSED LIGHTING

SHALLOW / LOW PLENUM DOWNLIGHTING

Model SKY5N

- ▶ Shallow/Low plenum NON-IC housing downlighting unit dimensions: 6.5"W x 5.5"H
- ▶ For NEW WORK applications where low-plenum or 6" joists are present.
- ▶ 3" clearance of insulation required.
- ▶ Adjustable housing for various ceiling thickness.

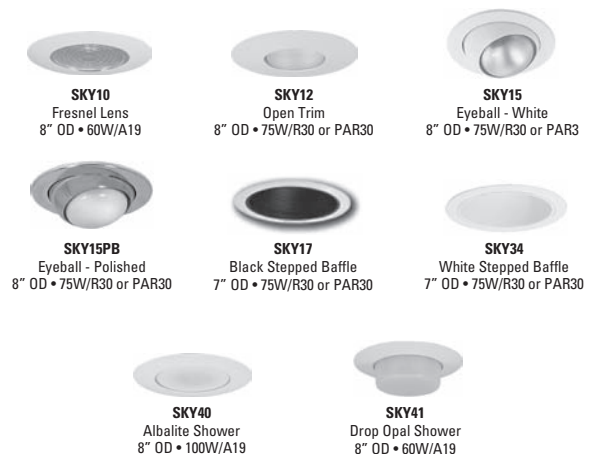
Model SKY5R

- ▶ Shallow/Low plenum NON-IC housing downlighting unit dimensions: 6.5"W x 5.5"H
- ▶ For OLD WORK or REMODEL applications where low-plenum or 6" joists are present.
- ▶ 3" clearance of insulation required.
- ▶ Adjustable housing for various ceiling thickness.

Model SKY5ICN

- ▶ Shallow/Low plenum IC housing downlighting unit dimensions: 6.5"W x 5.5"H
- ▶ For NEW WORK applications where low-plenum or 6" joists are present.
- ▶ For DIRECT CONTACT with insulation.
- ▶ Adjustable housing for various ceiling thickness.

Compatible Trims



RECESSED LIGHTING

COMPACT COMPLETE UNITS

Model SKY1



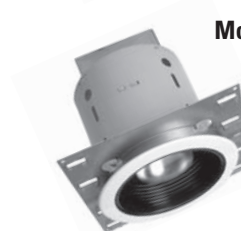
- ▶ Compact downlighting
- ▶ Completely assembled
- ▶ **Open Trim included**
- ▶ 75W/R30 lamp
- ▶ Dimensions: 7.5" OD x 6.5" HT

Model SKY2



- ▶ Compact downlighting
- ▶ Completely assembled
- ▶ **Eyeball Trim included**
- ▶ 50W/R20 lamp
- ▶ Dimensions: 7.5" OD x 7.125" HT

Model SKY3



- ▶ Compact downlighting
- ▶ Completely assembled
- ▶ **Black Baffle Trim included**
- ▶ 50W/R20 lamp
- ▶ Dimensions: 7.5" OD x 6.5" HT

SLOPED CEILING DOWNLIGHTING

Model SKYS6ICN



- ▶ Sloped ceiling IC Rated downlighting unit, dimensions: 7.5"H x 7"W
- ▶ For NEW WORK applications
- ▶ For DIRECT CONTACT with insulation
- ▶ For angled ceilings from 10 to 30 degrees

Compatible Trims



SKYS24
Reflector
7.5" OD • 150W R/PAR38



SKYS27
Black Stepped Baffle
8" OD • 75W/R30 or PAR40



SKYS28
White Stepped Baffle
8" OD • 75W/PAR30 or R40



SKY31
Black Stepped Baffle
Regressed Eyeball • 7" OD • 75W/R30
Specify **W** for White Baffle

RECESSED LIGHTING

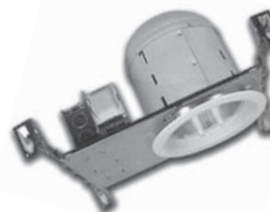
FLUORESCENT DOWNLIGHTING

Model SKY9ICNPL



- ▶ IC Rated Fluorescent Downlighting, for NEW WORK applications
- ▶ For DIRECT CONTACT with insulation
- ▶ For ONE 13 Watt TT Lamp
- ▶ High power factor
- ▶ 6.25"W x 7.5"H

Model SKY9ICN2PL



- ▶ IC Rated Fluorescent Downlighting, for NEW WORK applications
- ▶ For DIRECT CONTACT with insulation.
- ▶ For TWO 13 Watt TT Lamp
- ▶ High power factor
- ▶ 6.25"W x 7.5"H

MAGNETIC BALLAST STANDARD.
ELECTRONIC BALLAST AVAILABLE -
CONSULT FACTORY.

Compatible Trims



SKY10
Fresnel Lens
8" OD • 60W/A19



SKY23
Specular A-Lamp Reflector
7" OD • 100W/A19
Specify: Clear or Gold



SKY33BBA
(Model SKY9ICNPL only)
Specular A-Lamp Reflector
Black Baffle • 7" OD • 100W/A19



SKY34
(Model SKY9ICN2PL only)
White Stepped Baffle
7" OD • 75W/R30 or PAR30



SKY40
Albalite Shower
8" OD • 90W/R40 or PAR30
Air Tight



SKY41
Drop Opal Shower
8" OD • 150W/R40 or PAR38

RECESSED LIGHTING

Model SKYV181CN



- ▶ Low Voltage IC downlighting unit, dimensions: 4 1/2"W x 5 1/2"H.
- ▶ For NEW WORK applications.
- ▶ For DIRECT CONTACT with insulation.
- ▶ Up to 50 Watt lamp with proper trim.

Model SKYV18N



- ▶ Low Voltage NON-IC downlighting unit, dimensions: 4 1/2"W x 5 1/2"H.
- ▶ For NEW WORK applications.
- ▶ 3 inch clearance of insulation required.
- ▶ Up to 50 Watt lamp with proper trim.

Model SKYV18R



- ▶ Low Voltage NON-IC downlighting unit, dimensions: 4 1/2"W x 5 1/2"H.
- ▶ For OLD WORK or REMODEL applications.
- ▶ 3 inch clearance of insulation required.
- ▶ Up to 50 Watt lamp with proper trim.

Compatible Trims



SKYV90
Black Stepped Baffle
4 7/8" OD • 50W/MR16



SKYV91
Eyeball
4 7/8" OD • 50W/MR16
Specify: White, Chrome or Polished Brass



SKYV92
Adjustable Wall Wash
4 7/8" OD • 50W/MR16



SKYV93
Specular Clear Reflector
4 7/8" OD • 50W/MR16



SKYV98
White Stepped Baffle
4 7/8" OD • 50W/MR16



SKYV94
Specular Gold Reflector
4 7/8" OD • 50W/MR16

LED RECESSED LIGHTING

Model SKYD6012



- ▶ 4" LED Recessed Downlight
- ▶ Standard IC/NON-IC
- ▶ Power Consumption: 9W
- ▶ Input: 120V, 50-60Hz
- ▶ Lumen Output: 320

Model SKYD6030



- ▶ 6" LED Recessed Downlight
- ▶ Standard IC/NON-IC
- ▶ Power Consumption: 17W
- ▶ Input: 120V or 277V, 50-60Hz
- ▶ Lumen Output: 720
- ▶ CRI: 75
- ▶ Damp Location Rated

LED DOWNLIGHTING RETROFIT LAMPS

Model PAR38LDRK



- ▶ Par30 LED Retrofit Lamp
- ▶ 5x3w LEDs
- ▶ Fast and Easy installation
- ▶ Many applications
- ▶ 2700K, 3500K, 4500K & 6000K

Model PAR30LDRK



- ▶ Par38 LED Retrofit Lamp
- ▶ 9x3w LEDs
- ▶ Fast and Easy installation
- ▶ Many applications
- ▶ 2700K, 3500K, 4500K & 6000K

See www.SkylineLighting.com for additional LED retrofit lamps!

BATHROOM FANS



Model BFV50L

- ▶ 50 CFM Vent-Light.
- ▶ SONE rating: 3.0 SONES
- ▶ Attractive molded grille.
- ▶ Easy to install and remove.



Model BFV50LMG

- ▶ 50 CFM Vent-Light.
- ▶ SONE rating: 3.5 SONES
- ▶ Custom colors available.



Model BFV70

- ▶ 70 CFM vent.
- ▶ db Ratings: 60 dB
- ▶ Easy to install and remove.



Model BFV70L

- ▶ 70 CFM Vent-Light.
- ▶ SONE rating: 3.5 SONES
- ▶ Easy to install and remove.



Model BFV70LH

- ▶ 70 CFM Vent-Light-Heat.
- ▶ SONE rating: 4.0 SONES
- ▶ 1100 Watt heating element, fan forced.



Model BFV70LMG

- ▶ 70 CFM Vent-Light.
- ▶ SONE rating: 3.5 SONES
- ▶ Easy to install and remove.



Model BFV90

- ▶ 90 CFM vent.
- ▶ dB Ratings: 50dB
- ▶ Easy to install and remove.



Model BFV90L

- ▶ 90 CFM Vent-Light.
- ▶ dB Ratings: 50dB
- ▶ Easy to install and remove.

BATHROOM FANS



Model BFVF110L

- ▶ 110 CFM Vent-Light (fluorescent).
- ▶ dB Ratings: 58dB
- ▶ Energy saving fluorescent light.
- ▶ Easy to install and remove.



Model BFVF50L

- ▶ 50 CFM Vent-Light (fluorescent).
- ▶ SONE rating: 3.0 SONES
- ▶ Easy to install and remove.



Model BFVF70L

- ▶ 70 CFM Vent-Light (fluorescent).
- ▶ SONE rating: 3.5 SONES
- ▶ Energy saving fluorescent light.
- ▶ Easy to install and remove.



Model BFVF70LH

- ▶ 70 CFM Vent-Light.
- ▶ SONE rating: 3.5 SONES
- ▶ Easy to install and remove.



Model BFV70LMG

- ▶ 70 CFM Vent-Light.
- ▶ SONE rating: 3.5 SONES
- ▶ Easy to install and remove.



Model BFVF90L

- ▶ 90 CFM Vent-Light (fluorescent).
- ▶ dB Ratings: 50dB
- ▶ Energy saving fluorescent light.
- ▶ Easy to install and remove.

BATHROOM FANS



Model BFD00

- ▶ Easy to install and remove.
- ▶ No duct work necessary.
- ▶ Replaceable ACTIVATED CHARCOAL FILTER.



Model BFV110

- ▶ 110 CFM vent.
- ▶ dB Ratings: 58dB
- ▶ Easy to install and remove.



Model BFV110L

- ▶ 110 CFM Vent-Light.
- ▶ dB Ratings: 58dB
- ▶ Easy to install and remove.



Model BFV50

- ▶ 50 CFM vent.
- ▶ dB Ratings: 57 dB
- ▶ Easy to install and remove.



Model BFV50-3

- ▶ 50 CFM vent.
- ▶ SONE rating: 3.5 SONES
- ▶ Available in pack of six: Models BFV50BA & BFV50BB.
- ▶ Builder model.

GROUND FAULT INTERRUPTER



Model SKYGFI

- ▶ Fast Response.
- ▶ LED Indicator.
- ▶ Chemical resistant thermal plastic.

GROUND FAULT INTERRUPTER

PART NUMBER	DESCRIPTION
GFCI-15A	15 Amp – Light Almond
GFCI-15B	15 Amp – Black
GFCI-15I	15 Amp – Ivory
GFCI-15W	15 Amp – White
GFCI-20A	20 Amp – Light Almond
GFCI-20B	20 Amp – Black
GFCI-20I	20 Amp – Ivory
GFCI-20W	20 Amp – White

▶ Please contact factory for custom colors & compliance year

ULTRA QUIET FANS



Model SKY80UQ



Model SKY110L36UQE



Model SKY150L36UQE



FEATURES:

- ▶ Attractive molded grille
- ▶ Spring clips provide firm pressure against ceiling
- ▶ Permanently lubricated ball bearing motor, capacitor driven and rated for continuous operation
- ▶ Designed for ultra low rpm for quiet operation
- ▶ Centrifugal polymeric blower wheel with unique 2-way air dissipation for maximum airflow and quiet operation

- ▶ Built-in receptacle for quick activation
- ▶ Lighted models include two 18 Watt compact fluorescent ballasts and lamps
- ▶ Galvanized housing with plated sound absorbing finish for humid conditions and various attic temperatures
- ▶ 2-way mounting; 16" or 24" on-center key hole slots
- ▶ Markings on housing for ceiling/wall thickness
- ▶ Built-in junction box for easy wiring

- ▶ Molded 4" & 6" duct adapters included
- ▶ Sone Ratings:
SKY80UQ: .4 sones
SKY80L36UQE: .4 sones
SKY110UQ: .8 sones
SKY110L36UQE: .8 sones
SKY150UQ: 1.2 sones
SKY150L36UQE: 1.2 sones
- ▶ Housing Dimensions: 12" x 12" x 7.75"
- ▶ Grille Dimensions: 13.25" x 13.25" x 2.5"

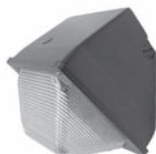


SMALL WALL PACKS



SKYWP1
Small Wall Pack
PC Lens

SKYWP2
Small
Wall Pack



FEATURES:

- Heavy duty diecast aluminum housing. w/powder coated bronze finish.
- 1/2" Tapped hole for photocell (optional)
- Anodized aluminum reflector.
- Silicone rubber gasket to prevent leakage.
- Polycarbonate lens (SKY1).
- Hinged borosilicate glass lens (SKY2).
- CSA Listed for Wet Location.
- R-NPF - Reactor Normal Power Factor
- HX-HPF - High Reactance Auto Transformer
- Lamp included

ORDER INFO

MODEL	VOLTS	WATTS	TYPE	BALLAST
SKY1-35H-120-WP1	120	35	HPS	R-NPF
SKY1-50H-(120)(MT)-WP1	120, 120/277	50	HPS	R-NPF, HX-HPF
SKY1-70H-(120)(QT)-WP1	120, QUAD	70	HPS	R-NPF, HX-HPF
SKY1-100H-(120)(QT)-WP1	120, QUAD	100	HPS	R-NPF, HX-HPF
SKY1-150H-120-WP1	120	150	HPS	R-NPF
SKY1-50M-MT-WP1	120/277	50	MH	HX-HPF
SKY1-70M-QT-WP1	QUAD	70	MH	HX-HPF
SKY1-42CF-MT-WP1	120/277	42	PL	ELECTRONIC
SKY1-32CF-MT-WP1	120/277	32	PL	ELECTRONIC
SKY1-26CF-MT-WP1	120/277	26	PL	ELECTRONIC
SKY2-35H-120-WP2	120	35	HPS	R-NPF
SKY2-50H-(120)(MT)-WP2	120, 120/277	50	HPS	R-NPF, HX-HPF
SKY2-70H-(120)(QT)-WP2	120, QUAD	70	HPS	R-NPF, HX-HPF
SKY2-100H-(120)(QT)-WP2	120, QUAD	100	HPS	R-NPF, HX-HPF
SKY2-150H-120-WP2	120	150	HPS	R-NPF
SKY2-50M-MT-WP2	120/277	50	MH	HX-HPF
SKY2-70M-QT-WP2	QUAD	70	MH	HX-HPF
SKY2-100M-QT-WP2	QUAD	100	MH	HX-HPF

MINI WALL PACKS



SKYWP6
Mini Wall Pack



SKYWP7
Polycarbonate Mini
Wall Pack (w/Photocell)

FEATURES:

- Heavy duty die cast aluminum housing. w/powder coated bronze finish.
- 1/2" Tapped hole for photocell (optional)
- Anodized aluminum reflector.
- Silicone rubber gasket to prevent leakage.
- Polycarbonate lens (SKY6).
- Hinged borosilicate glass lens (SKY7).
- Photocell standard (SKY7).
- CSA Listed for wet location.
- R-NPF - Reactor Normal Power Factor
- HX-HPF - High Reactance Auto Transformer
- Lamp included

ORDER INFO

MODEL	VOLTS	WATTS	TYPE	BALLAST
SKY6-35H-120-WP6	120	35	HPS	R-NPF
SKY6-50H-(120)(MT)-WP6	120, 120/277	50	HPS	R-NPF, HX-HPF
SKY6-70H-(120)(QT)-WP6	120, QUAD	70	HPS	R-NPF, HX-HPF
SKY6-100H-(120)(QT)-WP6	120, QUAD	100	HPS	R-NPF, HX-HPF
SKY6-150H-(120)(QT)-WP6	120, QUAD	150	HPS	R-NPF, HX-HPF
SKY6-50M-MT-WP6	120/277	50	MH	HX-HPF
SKY6-70M-QT-WP6	QUAD	70	MH	HX-HPF
SKY6-100M-QT-WP6	QUAD	100	MH	HX-HPF
SKY6-1X(26-32-42)CF-MT-WP6	120/277	26-32-42	PL	ELECTRONIC
SKY6-2X(26-32-42)CF-MT-WP6	120/277	52-64-84	PL	ELECTRONIC
SKY7-35H-120-WP7	120	35	HPS	R-NPF
SKY7-50H-120-WP7	120	50	HPS	R-NPF
SKY7-70H-120-WP7	120	100	HPS	R-NPF
SKY7-2X13CF-120-WP7	120	26	PL	MAGNETIC
SKY7-1X(26-32-42)-CF-WP7	120	26-32-42	PL	ELECTRONIC

FULL-CUTOFF WALL PACKS



SKYWP16 Medium Full-Cutoff



SKYWP17 Large Full-Cutoff

FEATURES:

- Heavy duty die cast aluminum housing w/powder coated bronze finish.
- Meets "Dark Sky" requirements.
- Hinged front and rear housings.
- Aluminum reflector.
- Silicone rubber gasket to prevent leakage.
- Tempered clear glass lens.
- CSA Listed for wet location.
- R-NPF - Reactor Normal Power Factor
- HX-HPF - High Reactance Auto Transformer
- CWA - Constant Wattage Auto Transformer
- Porcelain pulse rated medium or mogul base socket
- Pulse start adder 175WMH-250WMH & 400 WMH
- Lamp included

ORDER INFO

MODEL	VOLTS	WATTS	TYPE	BALLAST
SKY16-35H-120-WP16	120	35	HPS	R-NPF
SKY16-50H-120-WP16	120, 120/277	50	HPS	R-NPF, HX-HPF
SKY16-70H-(120)(QT)-WP16	120, QUAD	70	HPS	R-NPF, HX-HPF
SKY16-100H-(120)(QT)-WP16	120, QUAD	100	HPS	R-NPF, HX-HPF
SKY16-150H-(120)(QT)-WP16	120, QUAD	150	HPS	R-NPF, HX-HPF
SKY16-70M-QT-WP16	QUAD	70	MH	HX-HPF
SKY16-100M-QT-WP16	QUAD	100	MH	HX-HPF
SKY16-150M-QT-WP16	QUAD	150	MH	HX-HPF
SKY16-175M-QT-WP16	QUAD	175	MH	CWA
SKY16-2X(26-32-42)CF-MT-WP16	120/277	52-64-84	PL	ELECTRONIC
SKY16-1X(26-32-42)CF-MT-WP16	120/277	26-32-42	PL	ELECTRONIC
SKY17-100H-QT-MGL-WP17	QUAD	100	HPS	HX-HPF
SKY17-150H-QT-MGL-WP17	QUAD	150	HPS	HX-HPF
SKY17-250H-QT-WP17	QUAD	250	HPS	CWA
SKY17-400H-QT-WP17	QUAD	400	HPS	CWA
SKY17-100M-QT-WP17	QUAD	100	MH	HX-HPF
SKY17-150M-QT-WP17	QUAD	150	MH	HX-HPF
SKY17-175M-QT-WP17	QUAD	175	MH	CWA
SKY17-250M-QT-WP17	QUAD	250	MH	CWA
SKY17-2X(26-32-42)CF-MT-WP17	120/277	52-64-84	PL	ELECTRONIC
SKY17-1X(26-32-42)CF-MT-WP17	120/277	26-32-42	PL	ELECTRONIC
SKY17-400M-QT-WP17	QUAD	400	MH	CWA

MEDIUM & LARGE WALL PACKS

FEATURES:

- Heavy duty die cast aluminum housing w/powder coated bronze finish.
- 1/2" Tapped hole for photocell (optional)
- Anodized aluminum reflector.
- Silicone rubber gasket to prevent leakage.
- Hinged borosilicate glass lens.
- CSA Listed for wet location.
- R-NPF - Reactor Normal Power Factor
- HX-HPF - High Reactance Auto Transformer
- CSA Listed for wet location.
- R-NPF - Reactor Normal Power Factor
- HX-HPF - High Reactance Auto Transformer
- CWA - Constant Wattage Autotransmitter
- Porcelain pulse rated medium or mogul base socket
- Pulse start adder 175WMH-250WMH & 400 WMH
- Lamp included



SKYWPA3
Medium
Wall Pack



SKYWPA4
Shallow
Wall Pack



SKYWPA5
Large
Wall Pack

ORDER INFO

MODEL	VOLTS	WATTS	TYPE	BALLAST
SKY3-35H-120-WP3	120	35	HPS	R-NPF
SKY3-50H-(120)(MT)-WP3	120, 120/277	50	HPS	R-NPF, HX-HPF
SKY3-70H-(120)(QT)-WP3	120, QUAD	70	HPS	R-NPF, HX-HPF
SKY3-100H-(120)(QT)-WP3	120, QUAD	100	HPS	R-NPF, HX-HPF
SKY3-150H-(120)(QT)-WP3	120, QUAD	150	HPS	R-NPF, HX-HPF
SKY3-50M-MT-WP3	120/277	50	MH	HX-NPF
SKY3-70M-QT-WP3	QUAD	70	MH	HX-NPF
SKY3-100M-QT-WP3	QUAD	100	MH	HX-NPF
SKY3-150M-QT-WP3	QUAD	150	MH	HX-NPF
SKY3-175M-QT-WP3	QUAD	175	MH	CWA
SKY3-2X(26-32-42)CF-MT-WP3	120/277	52-64-84	PL	ELECTRONIC
SKY3-1X(26-32-42)CF-MT-WP3	120/277	26-32-42	PL	ELECTRONIC
SKY4-100H-QT-WP4-MGL	QUAD	100	HPS	HX-NPF
SKY4-150H-QT-WP4-MGL	QUAD	150	HPS	HX-NPF
SKY4-250H-QT-WP4	QUAD	250	HPS	CWA
SKY4-70M-QT-WP4-MGL	QUAD	70	MH	HX-NPF
SKY4-100M-QT-WP4-MGL	QUAD	100	MH	HX-NPF
SKY4-175M-QT-WP4-MGL	QUAD	175	MH	CWA
SKY4-250M-QT-WP4	QUAD	250	MH	CWA
SKY4-2X(26-32-42)CF-MT-WP4	120/277	52-64-84	PL	ELECTRONIC
SKY4-1X(26-32-42)CF-MT-WP4	120/277	26-32-42	PL	ELECTRONIC
SKY5-100H-QT-WP5-MGL	QUAD	100	HPS	HX-NPF
SKY5-150H-QT-WP5-MGL	QUAD	150	HPS	HX-NPF
SKY5-250H-QT-WP5	QUAD	250	HPS	CWA
SKY5-400H-QT-WP5	QUAD	400	HPS	CWA
SKY5-100M-QT-WP5-MGL	QUAD	100	MH	R-NPF
SKY5-150M-QT-WP5-MGL	QUAD	150	MH	R-NPF
SKY5-175M-QT-WP5-MGL	QUAD	175	MH	CWA
SKY5-250M-QT-WP5	QUAD	250	MH	CWA
SKY5-400M-QT-WP5	QUAD	400	MH	CWA

SQUARE & SLIM WALL PACKS



SKYWPA8
12" Wall Pack



SKYWPA9
Slimline Wall Pack

FEATURES:

- Heavy duty die cast aluminum housing w/powder coated bronze finish.
- 1/2" Tapped hole for photocell (optional)
- Anodized aluminum reflector.
- Silicone rubber gasket to prevent leakage.
- Hinged borosilicate glass lens.
- CSA Listed for wet location.
- R-NPF - Reactor Normal Power Factor
- HX-HPF - High Reactance Auto Transformer
- CWA - Constant Wattage Autotransmitter
- Pulse Start Adder 175-250WMH & 400 WMH
- Lamp included

ORDER INFO

MODEL	VOLTS	WATTS	TYPE	BALLAST
SKY8-35H-120-WP8	120	35	HPS	R-NPF
SKY8-50H-(120)(MT)-WP8	120, 120/277	50	HPS	R-NPF, HX-HPF
SKY8-70H-(120)(QT)-WP8	120, QUAD	70	HPS	R-NPF, HX-HPF
SKY8-100H-(120)(QT)-WP8	120, QUAD	100	HPS	R-NPF, HX-HPF
SKY8-150H-(120)(QT)-WP8	120, QUAD	150	HPS	R-NPF, HX-HPF
SKY8-50M-MT-WP8	120/277	50	MH	HX-HPF
SKY8-70M-QT-WP8	QUAD	70	MH	HX-HPF
SKY8-100M-QT-WP8	QUAD	100	MH	HX-HPF
SKY8-150M-QT-WP8	QUAD	150	MH	HX-HPF
SKY8-175M-QT-WP8	QUAD	175	MH	CWA
SKY8-2X(26-32-42)CF-MT-WP8	120/277	52-64-84	PL	ELECTRONIC
SKY8-1X(26-32-42)CF-MT-WP8	120/277	26-32-42	PL	ELECTRONIC
SKY9-100H-QT-WP9-MGL	QUAD	100	HPS	HX-HPF
SKY9-150H-QT-WP9-MGL	QUAD	150	HPS	HX-HPF
SKY9-250H-QT-WP9	QUAD	250	HPS	CWA
SKY9-400H-QT-WP9	QUAD	400	HPS	CWA
SKY9-150M-QT-WP9-MGL	QUAD	150	MH	CWA
SKY9-175M-QT-WP9-MGL	QUAD	175	MH	CWA
SKY9-250M-QT-WP9	QUAD	250	MH	CWA
SKY9-400M-QT-WP9	QUAD	400	MH	CWA

ACCESSORIES FOR WALL PACKS



SKYWPA4-2
Wire Guard



SKYWPA2
Polycarbonate Guard



SKYWPA3
Glareshield Side Cutoffs



SKYA2
Dark Sky Full Cutoff



SKYWPA1
Mounting Plate

ORDER INFO

MODEL#	Description
SKYWPA2-2	Dark Sky Full Cutoff, Fits SKY2
SKYWPA2-3	Dark Sky Full Cutoff, Fits SKY3
SKYWPA2-4	Dark Sky Full Cutoff, Fits SKY4
SKYWPA3-2	Glareshield, Fits SKY2
SKYWPA3-3	Side Cutoffs, Fits SKY3
SKYWPA3-4	Side Cutoffs, Fits SKY4
SKYWPA4-2	Wireguard, Fits SKY2
SKYWPA4-3	Wireguard, Fits SKY3
SKYWPA4-4	Wireguard, Fits SKY4 & SKY5
SKYWPA5-3	Polycarbonate Guard, Fits SKY3
SKYWPA5-4	Polycarbonate Guard, Fits SKY4
SKYPC1	120V Photocell
SKYPC2	277V Photocell
QR	Quartz Restrictor

SPECIALTY LIGHTING



SKYJJ1
Jelly Jar
Entry Light



SKYJJ2
Jelly Jar
Entry Light

JELLY JAR FEATURES:

- ▶ Heavy duty die cast aluminum housing.
- ▶ UltraCoat multistage finish.
- ▶ Silicone rubber gasket to prevent leakage.
- ▶ White glass globe (SKYJJ1).
- ▶ Brushed aluminum finish (SKYJJ1).
- ▶ Gray repaintable finish (SKYJJ2).
- ▶ Prismatic clear polycarbonate lens (SKYJJ2).
- ▶ CSA Listed for wet location.
- ▶ HX-HPF - High Reactance Auto Transformer



SKYPL1
Portable Work Light 8"



SKYPL2
Portable Work Light 12"

WORK LIGHT FEATURES:

- ▶ Heavy duty die cast aluminum housing.
- ▶ UltraCoat multistage finish.
- ▶ Carry handle & stabilizer feet standard.
- ▶ Cord & Plug included.
- ▶ Magnetic on rear.
- ▶ CSA Listed for wet location.
- ▶ HX-HPF - High Reactance Auto Transformer



(Back - Both Lights)

MODEL	VOLTS	WATTS	TYPE	LAMP	BALLAST
ENTRY LIGHTS					
SKYJJ1	120	100	Jelly Jar	NO-Incandescent	N/A
SKYJJ2-1x13CF-120	120	13	Jelly Jar	YES-CF	N/A
SKY1-JJ1G	N/A	N/A	Glass Lens	N/A	N/A
SKY2-JJ2PC	N/A	N/A	Prismatic Polycarbonate Lens	N/A	N/A
ENTRY LIGHTS ACCESSORIES					
SKY1-JJ1G	N/A	N/A	Glass Lens	N/A	N/A
SKY2-JJ2PC	N/A	N/A	Prismatic Polycarbonate Lens	N/A	N/A
PORTABLE WORK LIGHTS					
SKY1-70M-QT-PL1	QUAD	70	MH	YES	HX-HPF
SKY2-1x42CF-120-PL2	120	42	CF	YES	Electronic

FLOODS



SKYFL1
Small Flood
Light 6"



SKYFL2
Small Flood
Light - 7"



SKYFL3
Medium
Flood Light



SKYFL4
Large Flood
Light

FEATURES:

- ▶ Heavy duty die cast aluminum housing & lens frame w/powder coated bronze finish
- ▶ 1/2" Tapped hole for photocell (optional) or conduit mounting
- ▶ Anodized aluminum reflector
- ▶ Silicone rubber gasket to prevent leakage
- ▶ Tempered glass lens
- ▶ Adjustable reflector & socket for vertical or horizontal lamp positions (SKYFL3)
- ▶ CSA Listed for wet location
- ▶ Pulse Start Adder 175-250WMH & 400 WMH
- ▶ R-NPF - Reactor Normal Power Factor
- ▶ HX-HPF - High Reactance Auto Transformer
- ▶ CWA - Constant Wattage Autotransformer
- ▶ Lamp included

ORDER INFO

MODEL	VOLTS	WATTS	TYPE	BALLAST
SKY1-35H-120-FL1	120	35	HPS	R-NPF
SKY1-50H-120-FL1	120	50	HPS	R-NPF
SKY1-70H-120-FL1	120	70	HPS	R-NPF
SKY1-100H-120-FL1	120	100	HPS	R-NPF
SKY1-150H-120-FL1	120	150	HPS	R-NPF
SKY1-1X(26-32-42)CF-MT-FL1	120/277	26-32-42	PL	ELECTRONIC
SKY2-35H-120-FL2	120	35	HPS	R-NPF
SKY2-50H-(120)(MT)-FL2	120, 120/277	50	HPS	R-NPF, HX-NPF
SKY2-70H-(120)(QT)-120-FL2	120, QUAD	70	HPS	R-NPF, HX-NPF
SKY2-100H-(120)(QT)-120-FL2	120, QUAD	100	HPS	R-NPF, HX-NPF
SKY2-150H-120-FL2	120	150	HPS	R-NPF
SKY2-50M-MT-FL2	120/277	50	MH	HX-HPF
SKY2-70M-QT-FL2	QUAD	70	MH	HX-HPF
SKY2-100M-QT-FL2	QUAD	100	MH	HX-HPF
SKY3-35H-120-FL3	120	35	HPS	R-NPF
SKY3-50H-(120)(MT)-FL3	120, 120/277	50	HPS	R-NPF, HX-NPF
SKY3-70H-(120)(QT)-FL3	120, QUAD	70	HPS	R-NPF, HX-NPF
SKY3-100H-(120)(QT)-FL3	120, QUAD	100	HPS	R-NPF, HX-NPF
SKY3-150H-(120)(QT)-FL3	120, QUAD	150	HPS	R-NPF, HX-NPF
SKY3-50M-MT-FL3	120/277	50	MH	HX-HPF
SKY3-70M-QT-FL3	QUAD	70	MH	HX-HPF
SKY3-100M-QT-FL3	QUAD	100	MH	HX-HPF
SKY3-150M-QT-FL3	QUAD	150	MH	HX-HPF
SKY3-175M-QT-FL3	QUAD	175	MH	HX-HPF
SKY3-1X(26-32-42)CF-MT-FL3	120/277	26-32-42	PL	ELECTRONIC
SKY3-2X(26-32-42)CF-MT-FL3	120/277	52-64-84	PL	ELECTRONIC
SKY4-100H-QT-MGL-FL4	QUAD	100	HPS	HX-NPF
SKY4-150H-QT-MGL-FL4	QUAD	150	HPS	HX-NPF
SKY4-250H-QT-FL4	QUAD	250	HPS	CWA
SKY4-400H-QT-FL4	QUAD	400	HPS	CWA
SKY4-70M-QT-FL4	QUAD	70	MH	HX-NPF
SKY4-100M-QT-MGL-FL4	QUAD	100	MH	HX-NPF
SKY4-150M-QT-MGL-FL4	QUAD	150	MH	HX-NPF
SKY4-175M-QT-FL4	QUAD	175	MH	CWA
SKY4-250M-QT-FL4	QUAD	250	MH	CWA
SKY4-400M-QT-FL4	QUAD	400	MH	CWA

*Please see website for dimensions

FLOODS



SKYFL5
Deluxe 12"
Flood



SKYFL6 Deluxe
16" Flood



SKYFL7
24" Flood

FEATURES:

- ▶ Heavy duty die cast aluminum housing & lens frame w/powder coated bronze finish.
- ▶ Anodized aluminum reflector.
- ▶ Silicone rubber gasket to prevent leakage.
- ▶ Tempered glass lens.
- ▶ Optional reflectors available - Forward Throw (F), Wide Distribution (W), IES type 5 (5), Cutoff Distribution (C). (SKYFL5).
- ▶ Photocell adaptable.
- ▶ CSA Listed for wet location.
- ▶ SF - Slip Fitter or SB - Swivel Bracket.
- ▶ R-NPF - Reactor Normal Power Factor
- ▶ HX-HPF - High Reactance Auto Transformer
- ▶ CWA - Constant Wattage Autotransmitter
- ▶ Lamp included
- ▶ Pulse start adder 175-250 MH & 400 MH

ORDER INFO

MODEL	VOLTS	WATTS	TYPE	BALLAST
SKY5-35H-120-(SB)(SF)-FL5	120	35	HPS	R-NPF
SKY5-50H-120-(SB)(SF)-FL5	120	50	HPS	R-NPF
SKY5-70H-120-(QT)-(SB)(SF)-FL5	120, QUAD	70	HPS	R-NPF, HX-NPF
SKY5-100H-120-(QT)-(SB)(SF)-FL5	120, QUAD	100	HPS	R-NPF, HX-NPF
SKY5-150H-120-(QT)-(SB)(SF)-FL5	120, QUAD	150	HPS	R-NPF, HX-NPF
SKY5-50M-MT-(SB)(SF)-FL5	120/277	50	MH	HX-NPF
SKY5-70M-QT-(SB)(SF)-FL5	QUAD	70	MH	HX-NPF
SKY5-100M-QT-(SB)(SF)-FL5	QUAD	100	MH	HX-NPF
SKY5-150M-QT-(SB)(SF)-FL5	QUAD	150	MH	HX-NPF
SKY5-175M-QT-(SB)(SF)-FL5	QUAD	175	MH	CWA
SKY6-100H-QT-MGL-(SB)(SF)-FL6	QUAD	100	HPS	HX-NPF
SKY6-150H-QT-MGL-(SB)(SF)-FL6	QUAD	150	HPS	HX-NPF
SKY6-250H-QT-(SB)(SF)-FL6	QUAD	250	HPS	CWA
SKY6-400H-QT-(SB)(SF)-FL6	QUAD	400	HPS	CWA
SKY6-100M-QT-MGL-(SB)(SF)-FL6	QUAD	100	MH	HX-NPF
SKY6-150M-QT-MGL-(SB)(SF)-FL6	QUAD	150	MH	HX-NPF
SKY6-175M-QT-(SB)(SF)-FL6	QUAD	175	MH	CWA
SKY6-250M-QT-(SB)(SF)-FL6	QUAD	250	MH	CWA
SKY6-400M-QT-(SB)(SF)-FL6	QUAD	400	MH	CWA
SKY7-1000M-QT-(SB)(SF)-FL7	QUAD	1000	MH	CWA
SKY7-1000H-QT-(SB)(SF)-FL7	QUAD	1000	HPS	CWA

*Please see website for dimensions

FLOODS



SKYFL8
Round Black HID Flood



SKYFL9
Round Black CF Flood



SKYFL10 Small & SKY11 Medium CF Flood

FEATURES:

- ▶ Heavy duty die cast aluminum housing & lens frame w/powder coated bronze finish.
- ▶ 1/2" Tapped hole for photocell (optional) or conduit mounting.
- ▶ Anodized aluminum reflector.
- ▶ Silicone rubber gasket to prevent leakage.
- ▶ Polycarbonate housing & lens (SKYFL9).
- ▶ Tempered glass lens.
- ▶ Photocell adaptable.
- ▶ CSA Listed for wet location.
- ▶ R-NPF - Reactor Normal Power Factor
- ▶ HX-HPF - High Reactance Auto Transformer
- ▶ CWA - Constant Wattage Autotransmitter
- ▶ Lamp included

ORDER INFO

MODEL	VOLTS	WATTS	TYPE	BALLAST
SKY8-35H-120-FL8	120	35	HPS	R-NPF
SKY8-50H-120-FL8	120	50	HPS	R-NPF
SKY8-70H-120-FL8	120	70	HPS	R-NPF
SKY8-100H-120-FL8	120	100	HPS	R-NPF
SKY8-150H-120-FL8	120	150	HPS	R-NPF
SKY8-50M-120-FL8	120/277	50	MH	HX-HPF
SKY8-70M-QT-FL8	QUAD	70	MH	HX-HPF
SKY8-100M-QT-FL8	QUAD	100	MH	HX-HPF
SKY8-150M-QT-FL8	QUAD	150	MH	HX-HPF
SKY8-175M-QT-FL8	QUAD	175	MH	CW
SKY9-1X13CF-MT-FL9	120/277	13	PL	ELECTRONIC
SKY9-2X13CF-MT-FL9	120/277	26	PL	ELECTRONIC
SKY10-1X42CF-MT-FL10	120/277	42	PL	ELECTRONIC
SKY11-2X42CF-MT-FL11	120/277	84	PL	ELECTRONIC

*Please see website for dimensions

ACCESSORIES FOR FLOODS



SKYA1
Stake Mount



SKYA2
Glareshields &
Back Cutoffs



SKYA3
Baffles



SKYA4
Wire Guards

MODEL#	Description
MOUNTING HARDWARE	
SKYA1-POLE-FLA1	Pole Tenon Mount, Fits Over 2" Pole or Tenon (use with Small Yoke, SKYA-1 SYOKE)
SKYA1-SYOKE-FLA1	Small Yoke, Fits SKY4
SKYA1-LYOKE-FLA1	Large Yoke, Fits SKY4
SKYA1-POST-FLA1	Post Top Fitter (3 1/2" Tapped Holes w/Coin Plugs) Fits SKY1, 2 & 3
SKYA1-SLIP-FLA1	Slip Fitter
SKYA1-SWIVEL-FLA1	Two-piece Swivel Bracket (fits SKY7 - complete with mounting hardware)
SKYA1-HDSLIP-FLA1	Heavy Duty Slip Fitter
SKYA1-HDSWIVEL-FLA1	Heavy Duty Swivel Bracket
SKYA1-STAKE-FLA1	HID Stake (19" long)
SKYA1-6MA-FLA1	6" Aluminum Extruded Mounting Arm
SKYA1-10MA-FLA1	10" Aluminum Extruded Mounting Arm
SKYA1-12MA-FLA1	12" Aluminum Extruded Mounting Arm
SKYA1-18MA-FLA1	18" Aluminum Extruded Mounting Arm

GLARESHIELDS / BACK CUTOFFS	
SKYA2-1/2-FLA2	Fits SKY1 & SKY2
SKYA2-3-FLA2	Fits SKY3
SKYA2-4-FLA2	Fits SKY4
SKYA2-5-FLA2	Fits SKY5
SKYA2-6-FLA2	Fits SKY6
SKYA2-9/10-FLA2	Fits SKY9 & 10

BAFFLES	
SKYA3-6-FLA3	Fits SKY6
SKYA3-7-FLA3	Fits SKY7

WIRE GUARDS	
SKYA4-1/2-FLA4	Fits SKY1 & SKY2
SKYA4-3-FLA4	Fits SKY3
SKYA4-4-FLA4	Fits SKY4
SKYA4-5-FLA4	Fits SKY5
SKYA4-6/7-FLA4	Fits SKY6 & SKY7
SKYA4-8-FLA4	Fits SKY8

POLYCARBONATE GUARDS	
SKYA5-1/2-FLA5	Fits SKY1 & SKY2
SKYA5-3-FLA5	Fits SKY3
SKYA5-4-FLA5	Fits SKY4
SKYA5-5-FLA5	Fits SKY5
SKYA5-6/7-FLA5	Fits SKY6 & SKY7
SKYA5-8-FLA5	Fits SKY8

PHOTOCELLS	
SKYPC1	120V Photocell
SKYPC2	277V Photocell

VANDAL RESISTANT CANOPY LIGHTING



SKYVRA2-4
External Hood
(shown mounted
on VR4)



SKYVR3
Small 5" x 8"



SKYVR4
Medium 9" x 9"



SKYVR5
Large 12" x 12"

FEATURES:

- Heavy duty die cast aluminum housing & lens frame w/powder coated bronze finish.
- Lamps included
- White reflector.
- Silicone rubber gasket to prevent leakage.
- Clear polycarbonate prismatic lens.
- UL listed for wet location for ceiling mount.
- CSA Listed for damp location for wall mount.
- R-NPF - Reactor Normal Power Factor
- HX-HPF - High Reactance Auto Transformer
- CWA - Constant Wattage Autotransmitter

MODEL	VOLTS	WATTS	TYPE	BALLAST
5X8 SMALL				
SKY3-1X7CF-120-VR3	120	7	PL	MAGNETIC
SKY3-1X9CF-120-VR3	120	9	PL	MAGNETIC
SKY3-1X13CF-120-VR3	120	13	PL	MAGNETIC
9X9 MEDIUM				
SKY4-35H-120-VR4	120	35	HPS	R-NPF
SKY4-50H-(120)(MT)-VR4	120,120/277	50	HPS	R-NPF,HX-HPF
SKY4-70H-(120)(QT)-VR4	120,QUAD	70	HPS	R-NPF,HX-HPF
SKY4-50M-MT-VR4	120/277	50	MH	HX-HPF
SKY4-70M-QT-VR4	QUAD	70	MH	HX-HPF
SKY4-2X9CF-120-VR4	120	18	PL	MAGNETIC
SKY4-2X13CF-120-VR4	120	26	PL	MAGNETIC
SKY4-1X(26-32-42)CF-MT-VR4	120/277	26-32-42	PL	ELECTRONIC
12X12 LARGE				
SKY5-70H-120-VR5	120	70	HPS	R-NPF
SKY5-100H-120-VR5	120	100	HPS	R-NPF
SKY5-150H-120-VR5	120	150	HPS	R-NPF
SKY5-70M-QT-VR5	QUAD	70	MH	HX-HPF
SKY5-100M-QT-VR5	QUAD	100	MH	HX-HPF
SKY5-175M-QT-VR5	QUAD	175	MH	CWA
SKY5-2X13CF-MT-VR5	120/277	26	PL	MAGNETIC
SKY5-1X(26-32-42)CF-MT-VR5	120/277	26-32-42	PL	ELECTRONIC
SKY5-2X(26-32-42)CF-MT-VR5	120/277	52-64-84	PL	ELECTRONIC

VANDAL RESISTANT ACCESSORIES

SKYA1-4/5-VRA1	Internal Aluminum Reflector, fits SKYVR4 & SKYVR5
SKYA2-4/5-VRA2	External Hood, fits SKYVR4 & SKYVR5
SKYA3-VRA3	White Polycarbonate Lens

VANDAL RESISTANT WALL LIGHTING

FEATURES:

- Heavy duty die cast aluminum housing & lens frame w/powder coated bronze finish.
- Available in bronze or black
- Anodized aluminum reflector.
- Silicone rubber gasket to prevent leakage.
- Polycarbonate prismatic lens.
- CSA Listed for wet location.
- Dimensions: 5.125"W x 13.25"H x 3.75"D



SKYVR1
Deep Entry
Light



SKYVR2
Shallow Entry
Light - 3" deep

MODEL	VOLTS	WATTS	TYPE	LAMP	BALLAST
SKY1-2x13CF-120-VR1	120	26	CF	YES	MAGNETIC
SKY2-1x13CF-120-VR2	120	13	CF	YES	MAGNETIC

ROUND HID BULKHEADS & FLUORESCENT



SKYSP13
Half Cut Round
Bulkhead



SKYSP15
Open Round
Bulkhead



SKYSP14
Grid Round
Bulkhead



SKYSP18
Euro-Style Bulkhead

FEATURES:

- ▶ Heavy duty die cast aluminum housing w/powder coated bronze finish.
- ▶ UltraCoat multistage finish.
- ▶ Anodized aluminum reflector.
- ▶ Silicone rubber gasket to prevent leakage.
- ▶ Clear molded prismatic borosilicate glass lens standard.
- ▶ Frosted molded prismatic borosilicate glass lens available - (F).
- ▶ Available in Black (B) or White (W).
- ▶ CSA Listed for wet location.
- ▶ 15 inch diameter
- ▶ R-NPF - Reactor Normal Power Factor
- ▶ HX-HPF - High Reactance Auto Transformer
- ▶ CWA - Constant Wattage Auto Transformer
- ▶ Pulse start adder 175WMH
- ▶ Lamp included

ORDER INFO

MODEL	VOLTS	WATTS	TYPE	BALLAST
SKY13-35H-120-WP13	120	35	HPS	R-NPF
SKY13-50H-(120)(MT)-WP13	120,120/277	50	HPS	R-NPF,HX-HPF
SKY13-70H-(120)(QT)-WP13	120,QUAD	70	HPS	R-NPF,HX-HPF
SKY13-100H-(120)(QT)-WP13	120,QUAD	100	HPS	R-NPF,HX-HPF
SKY13-150H-(120)(QT)-WP13	120,QUAD	150	HPS	R-NPF,HX-HPF
SKY13-70M-QT-WP13	QUAD	70	MH	HX-NPF
SKY13-100M-QT-WP13	QUAD	100	MH	HX-NPF
SKY13-150M-QT-WP13	QUAD	150	MH	HX-NPF
SKY13-175M-QT-WP13	QUAD	175	MH	CWA
SKY13-2X(26-32-42)CF-MT-WP13	120/277	52-64-84	PL	ELECTRONIC
SKY13-1X(26-32-42)CF-MT-WP13	120/277	26-32-42	PL	ELECTRONIC
SKY14-35H-120-WP14	120	35	HPS	R-NPF
SKY14-50H-(120)(MT)-WP14	120,120/277	50	HPS	R-NPF,HX-HPF
SKY14-70H-(120)(QT)-WP14	120,QUAD	70	HPS	R-NPF,HX-HPF
SKY14-100H-(120)(QT)-WP14	120,QUAD	100	HPS	R-NPF,HX-HPF
SKY14-150H-(120)(QT)-WP14	120,QUAD	150	HPS	R-NPF,HX-HPF
SKY14-70M-QT-WP14	QUAD	70	MH	HX-NPF
SKY14-100M-QT-WP14	QUAD	100	MH	HX-NPF
SKY14-150M-QT-WP14	QUAD	150	MH	HX-NPF
SKY14-175M-QT-WP14	QUAD	175	MH	CWA
SKY14-2X(26-32-42)CF-MT-WP14	120/277	52-64-84	PL	ELECTRONIC
SKY14-1X(26-32-42)CF-MT-WP14	120/277	26-32-42	PL	ELECTRONIC
SKY15-35H-120-WP15	120	35	HPS	R-NPF
SKY15-50H-(120)(MT)-WP15	120,120/277	50	HPS	R-NPF,HX-HPF
SKY15-70H-(120)(QT)-WP15	120,QUAD	70	HPS	R-NPF,HX-HPF
SKY15-100H-(120)(QT)-WP15	120,QUAD	100	HPS	R-NPF,HX-HPF
SKY15-150H-(120)(QT)-WP15	120,QUAD	150	HPS	R-NPF,HX-HPF
SKY15-70M-QT-WP15	QUAD	70	MH	HX-NPF
SKY15-100M-QT-WP15	QUAD	100	MH	HX-NPF
SKY15-150M-QT-WP15	QUAD	150	MH	HX-NPF
SKY15-175M-QT-WP15	QUAD	175	MH	CWA
SKY15-2X(26-32-42)CF-MT-WP15	120/277	52-64-84	PL	ELECTRONIC
SKY15-1X(26-32-42)CF-MT-WP15	120/277	26-32-42	PL	ELECTRONIC
SKY18-2X(26-32-42)CF-MT-WP18	120/277	52-64-84	PL	ELECTRONIC
SKY18-1X(26-32-42)CF-MT-WP18	120/277	26-32-42	PL	ELECTRONIC

HIGH BAY & LOW BAY FIXTURES



SKYHB1
Standard
High Bay

SKYHB2
Deluxe
High Bay

SKYHB3
Fluorescent
High Bay



SKYLB1
Acrylic
Reflector



SKYLB1
Aluminum
Reflector

FEATURES:

- ▶ Heavy duty die cast aluminum housing w/powder coated white finish.
- ▶ Includes hook for easy mounting.
- ▶ Drop lens, glass lens or open rated (MH only)
- ▶ 16" or 22" aluminum reflector
- ▶ 16" or 22" acrylic reflector
- ▶ CSA Listed for damp location.
- ▶ R-NPF - Reactor Normal Power Factor
- ▶ HX-HPF - High Reactance Auto Transformer
- ▶ CWA - Constant Wattage Autotransformer
- ▶ Lamp included

ORDER INFO

MODEL	VOLTS	WATTS	TYPE	OPTICS
LOWBAY				
SKY1-150H-QT-R16-DL-LB1	QUAD	150	HPS	16" ALUMINUM REFLECTOR
SKY1-150H-QT-R22-DL-LB1	QUAD	150	HPS	22" ALUMINUM REFLECTOR
SKY1-150H-QT-C16-DL-LB1	QUAD	150	HPS	16" ACRYLIC REFRACTOR
SKY1-150H-QT-C22-DL-LB1	QUAD	150	HPS	22" ACRYLIC REFRACTOR
SKY1-150M-QT-R16-DL-LB1	QUAD	150	MH	16" ALUMINUM REFLECTOR
SKY1-150M-QT-R22-DL-LB1	QUAD	150	MH	22" ALUMINUM REFLECTOR
SKY1-150M-QT-C16-DL-LB1	QUAD	150	MH	16" ACRYLIC REFRACTOR
SKY1-150M-QT-C22-DL-LB1	QUAD	150	MH	22" ACRYLIC REFRACTOR
SKY1-250H-QT-R16-DL-LB1	QUAD	250	HPS	16" ALUMINUM REFLECTOR
SKY1-250H-QT-R22-DL-LB1	QUAD	250	HPS	22" ALUMINUM REFLECTOR
SKY1-250H-QT-C16-DL-LB1	QUAD	250	HPS	16" ACRYLIC REFRACTOR
SKY1-250H-QT-C22-DL-LB1	QUAD	250	HPS	22" ACRYLIC REFRACTOR
SKY1-400M-QT-R16-DL-LB1	QUAD	400	MH	16" ALUMINUM REFLECTOR
SKY1-400M-QT-R22-DL-LB1	QUAD	400	MH	22" ALUMINUM REFLECTOR
SKY1-400M-QT-C16-DL-LB1	QUAD	400	MH	16" ACRYLIC REFRACTOR
SKY1-400M-QT-C22-DL-LB1	QUAD	400	MH	22" ACRYLIC REFRACTOR
STANDARD HIGH BAY				
SKY1-250H-QT-R16-HB1	QUAD	250	HPS	16" ALUMINUM REFLECTOR
SKY1-250H-QT-R22-HB1	QUAD	250	HPS	22" ALUMINUM REFLECTOR
SKY1-250H-QT-C16-HB1	QUAD	250	HPS	16" ACRYLIC REFRACTOR
SKY1-250H-QT-C22-HB1	QUAD	250	HPS	22" ACRYLIC REFRACTOR
SKY1-250M-QT-R16-HB1	QUAD	250	MH	16" ALUMINUM REFLECTOR
SKY1-250M-QT-R22-HB1	QUAD	250	MH	22" ALUMINUM REFLECTOR
SKY1-250M-QT-C16-HB1	QUAD	250	MH	16" ACRYLIC REFRACTOR
SKY1-250M-QT-C22-HB1	QUAD	250	MH	22" ACRYLIC REFRACTOR
SKY1-400H-QT-R16-HB1	QUAD	400	HPS	16" ALUMINUM REFLECTOR
SKY1-400H-QT-R22-HB1	QUAD	400	HPS	22" ALUMINUM REFLECTOR
SKY1-400H-QT-C16-HB1	QUAD	400	HPS	16" ACRYLIC REFRACTOR
SKY1-400H-QT-C22-HB1	QUAD	400	HPS	22" ACRYLIC REFRACTOR
SKY1-400M-QT-R16-HB1	QUAD	400	MH	16" ALUMINUM REFLECTOR
SKY1-400M-QT-R22-HB1	QUAD	400	MH	22" ALUMINUM REFLECTOR
SKY1-400M-QT-C16-HB1	QUAD	400	MH	16" ACRYLIC REFRACTOR
SKY1-400M-QT-C22-HB1	QUAD	400	MH	22" ACRYLIC REFRACTOR
DELUXE HIGH BAY				
SKY2-150H-QT-R16-HB2	QUAD	150	HPS	16" ALUMINUM REFLECTOR
SKY2-150H-QT-R22-HB2	QUAD	150	HPS	22" ALUMINUM REFLECTOR
SKY2-150H-QT-C16-HB2	QUAD	150	HPS	16" ACRYLIC REFRACTOR
SKY2-150H-QT-C22-HB2	QUAD	150	HPS	22" ACRYLIC REFRACTOR
SKY2-150M-QT-R16-HB2	QUAD	150	MH	16" ALUMINUM REFLECTOR
SKY2-150M-QT-R22-HB2	QUAD	150	MH	22" ALUMINUM REFLECTOR
SKY2-150M-QT-C16-HB2	QUAD	150	MH	16" ACRYLIC REFRACTOR
SKY2-150M-QT-C22-HB2	QUAD	150	MH	22" ACRYLIC REFRACTOR
SKY2-250H-QT-R16-HB2	QUAD	250	HPS	16" ALUMINUM REFLECTOR
SKY2-250H-QT-R22-HB2	QUAD	250	HPS	22" ALUMINUM REFLECTOR
SKY2-250H-QT-C16-HB2	QUAD	250	HPS	16" ACRYLIC REFRACTOR
SKY2-250H-QT-C22-HB2	QUAD	250	HPS	22" ACRYLIC REFRACTOR
SKY2-250M-QT-R16-HB2	QUAD	250	MH	16" ALUMINUM REFLECTOR
SKY2-250M-QT-R22-HB2	QUAD	250	MH	22" ALUMINUM REFLECTOR
SKY2-250M-QT-C16-HB2	QUAD	250	MH	16" ACRYLIC REFRACTOR
SKY2-250M-QT-C22-HB2	QUAD	250	MH	22" ACRYLIC REFRACTOR
SKY2-400H-QT-R16-HB2	QUAD	400	HPS	16" ALUMINUM REFLECTOR
SKY2-400H-QT-R22-HB2	QUAD	400	HPS	22" ALUMINUM REFLECTOR
SKY2-400H-QT-C16-HB2	QUAD	400	HPS	16" ACRYLIC REFRACTOR
SKY2-400H-QT-C22-HB2	QUAD	400	HPS	22" ACRYLIC REFRACTOR
SKY2-400M-QT-R16-HB1	QUAD	400	MH	16" ALUMINUM REFLECTOR
SKY2-400M-QT-R22-HB1	QUAD	400	MH	22" ALUMINUM REFLECTOR
SKY2-400M-QT-C16-HB1	QUAD	400	MH	16" ACRYLIC REFRACTOR
SKY2-400M-QT-C22-HB1	QUAD	400	MH	22" ACRYLIC REFRACTOR
SKY2-1000H-QT-R22-HB2	QUAD	1000	HPS	22" ALUMINUM REFLECTOR
SKY2-1000H-QT-C22-HB2	QUAD	1000	HPS	22" ACRYLIC REFRACTOR
SKY2-1000M-QT-R22-HB2	QUAD	1000	MH	22" ALUMINUM REFLECTOR
SKY2-1000M-QT-C22-HB2	QUAD	1000	MH	22" ACRYLIC REFRACTOR
FLUORESCENT HIGH BAY				
SKY3-6X42CF-MT-HB3	120/277	252	CF-6	22" ACRYLIC REFRACTOR
SKY3-8X42CF-MT-HB3	120/277	336	CF-8	22" ACRYLIC REFRACTOR

ECONOMY HIGH BAY ACCESSORIES



ORDER INFO

MODEL#	Description
REFLECTORS AND GLASS	
SKYHBA-16R	16" Spun Anodized Aluminum Reflector
SKYHBA-22R	22" Spun Anodized Aluminum Reflector
SKYHBA-16L	16" Tempered Flat Glass w/Gasket
SKYHBA-22L	22" Tempered Flat Glass w/Gasket
SKYHBA-16CL	16" Clamp Band
SKYHBA-22CL	22" Clamp Band
SKYHBA-16ACR	16" Acrylic Refractor
SKYHBA-22ACR	22" Acrylic Refractor
SKYHBA-16CD	Collar for 16" Acrylic Refractor
SKYHBA-22CD	Collar for 22" Acrylic Refractor
SKYHBA-WG-16	Wire Guard for 16" Reflector
SKYHBA-WG-22	Wire Guard for 22" Reflector

► For High Bay Cord Sets, please consult factory and provide NEMA configuration

SPORT LIGHTERS

FEATURES:

- Heavy duty die cast aluminum housing w/powder coated bronze finish.
- UltraCoat multistage finish.
- Ballast box w/stamped aluminum cover & silicone rubber gasket to prevent leakage.
- Anodized spun aluminum reflector.
- Tempered glass lens with gasket & clamp.
- Available with IES Types 3, 4, 5, and 6 distribution.
- UL listed for wet location.



ORDER INFO

MODEL	VOLTS	WATTS	TYPE	LAMP	BALLAST
SPORTS LIGHTERS					
SKY1-1000H-QT-SL1	QUAD	1000	HPS	YES	CWA
SKY1-1000M-QT-SL1	QUAD	1000	MH	YES	CWA
SKY2-1500M-QT-SL2	QUAD	1500	MH	YES	CWA
SPORTS LIGHTER ACCESSORIES					
MODEL	DESCRIPTION				
SKYA1-YM-SLA1	Steel Yoke, Textured Bronze Finish - Fits SL1 Sports Lighter Model				
SKYA2-LENS-SLA2	Tempered Glass, Gasket and Clampband - Fits SL1 Sports Lighter				
SKYA3-GG-SLA3	Tempered Glass and Gasket Only				
SKYA4-CB-SLA4	Clampband Only				
SKYA5-CBFG-SLA5	EZ Fit Clamp Band and Flat Glass - On/Off Latching Mechanism Bronze Finish - Fits SL1 Model Sports Lighter				
SKYA6-PTM-SLA6	Adjustable Steel Pole Top Mount Includes Hardware, Textured Bronze Finish - Fits SL1 Sports Lighter Model				
SKYA7-GSR-SLA7	Glareshield for Reflector - Aluminum Construction - Fits SL1 Sports Lighter Model				
SKYA8-ILB-SLA8	Internal Lamp Brace (shown mounted) - Provides Support for Lamp. Fits SL1 Sports Lighter Model				

GARAGE LIGHTERS

FEATURES:

- Heavy duty die cast aluminum housing & lens frame w/powder coated bronze finish.
- Built-in template for easy installations on GL1.
- Integrated easy-hang brackets on GL2.
- 1/2" Tapped hole for conduit mounting.
- Aluminum reflector.
- Silicone rubber gasket to prevent leakage.
- Polycarbonate lens with stainless steel screws.
- UL listed for wet location (GL1), damp (GL2)
- R-NPF - Reactor Normal Power Factor
- HX-HPF - High Reactance Auto Transformer
- CWA - Constant Wattage Autotransmitter
- Lamp included



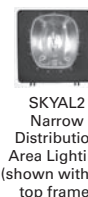
ORDER INFO

MODEL	VOLTS	WATTS	TYPE	BALLAST
SKY1-70H-(120)(QT)-GL1	120, QUAD	70	HPS	R-NPF,HX-HPF
SKY1-100H-(120)(QT)-GL1	120, QUAD	100	HPS	R-NPF,HX-HPF
SKY1-150H-(120)(QT)-GL1	120, QUAD	150	HPS	R-NPF,HX-HPF
SKY1-70M-QT-GL1	QUAD	70	MH	HX-NPF
SKY1-100M-QT-GL1	QUAD	100	MH	HX-NPF
SKY1-150M-QT-GL1	QUAD	150	MH	HX-NPF
SKY1-175M-QT-GL1	QUAD	175	MH	CWA
SKY1-2X(26-32-42)CF-MT-GL1	120/277	52,64,84	PL	ELECTRONIC
SKY2-70H-(120)(QT)-GL2	120,QUAD	70	HPS	R-NPF,HX-HPF
SKY2-100H-(120)(QT)-GL2	120,QUAD	100	HPS	R-NPF,HX-HPF
SKY2-150H-(120)(QT)-GL2	120,QUAD	150	HPS	R-NPF,HX-HPF
SKY2-70M-QT-GL2	QUAD	70	MH	HX-NPF
SKY2-100M-QT-GL2	QUAD	100	MH	HX-NPF
SKY2-150M-QT-GL2	QUAD	150	MH	HX-NPF
SKY2-175M-QT-GL2	QUAD	175	MH	CWA
SKY2-4X42CF-MT-GL2	120/277	168	PL	ELECTRONIC
SKY2-2X42CF-MT-GL2	120/277	84	PL	ELECTRONIC

AREA LIGHTS

FEATURES:

- Heavy duty die cast aluminum housing & frame w/powder coated bronze finish.
- Mogul Base Standard, AL1 has horizontal socket mounting.
- 1/2" Tapped hole for photocell (optional) or conduit mounting.
- Tempered glass lens.
- Specular aluminum reflector.
- Silicone rubber gasket to prevent leakage.
- UL listed for wet location.
- Specify mounting option.
- R-NPF - Reactor Normal Power Factor
- HX-HPF - High Reactance Auto Transformer
- CWA - Constant Wattage Autotransmitter



ORDER INFO

MODEL	VOLTS	WATTS	TYPE	LAMP	BALLAST
SKY1-100H-QT-AL1	QUAD	100	HPS	YES	HX-NPF
SKY1-150H-QT-AL1	QUAD	150	HPS	YES	CWA
SKY1-100M-QT-AL1	QUAD	100	MH	YES	HX-NPF
SKY1-150M-QT-AL1	QUAD	150	MH	YES	HX-NPF
SKY1-175M-QT-AL1	QUAD	175	MH	YES	CWA
SKY1-250M-QT-AL1	QUAD	250	MH	YES	CWA
SKY1-400M-QT-AL1	QUAD	400	MH	YES	CWA
SKY2-100H-QT-AL2	QUAD	100	HPS	YES	HX-NPF
SKY2-150H-QT-AL2	QUAD	150	HPS	YES	CWA
SKY2-250H-QT-AL2	QUAD	250	HPS	YES	CWA
SKY2-100M-QT-AL2	QUAD	100	MH	YES	HX-NPF
SKY2-150M-QT-AL2	QUAD	150	MH	YES	HX-NPF
SKY2-175M-QT-AL2	QUAD	175	MH	YES	CWA
SKY2-250M-QT-AL2	QUAD	250	MH	YES	CWA

— Consult Factory for Bullhorn Options —

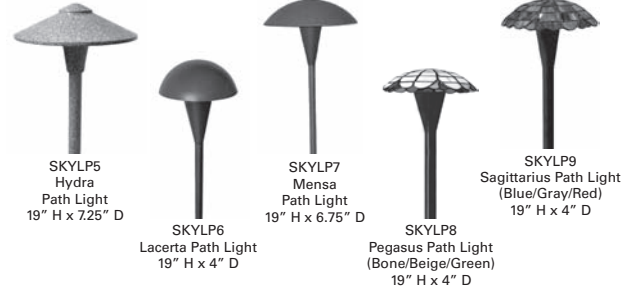
LANDSCAPE PATH LIGHTING



FEATURES:

- ▶ Aluminum stanchions.
- ▶ Cast aluminum shades (SKYLP1 & 4).
- ▶ Tiffany style shades (SKYLP2 & 3).
- ▶ 48" cable & 18W bulb incl.
- ▶ UL listed for wet location.
- ▶ Optional ground stake available.

MODEL	STANCHION COLOR	MAX WATTS	TYPE	BULB	SHADE TYPE
LOW VOLTAGE LANDSCAPE PATH LIGHTING					
SKY1-C-27W-LP1	Camel	27	N/A	YES-18W	Cast Aluminum
SKY1-G-27W-LP1	Verdigris	27	N/A	YES-18W	Cast Aluminum
SKY1-B-27W-LP1	Brown	27	N/A	YES-18W	Cast Aluminum
SKY1-BLK-27W-LP1	Black	27	N/A	YES-18W	Cast Aluminum
SKY2-C-27W-LP2	Camel	27	N/A	YES-18W	Tiffany Glass
SKY2-G-27W-LP2	Verdigris	27	N/A	YES-18W	(Bone/Beige/Green) Tiffany Glass
SKY2-B-27W-LP2	Brown	27	N/A	YES-18W	(Bone/Beige/Green) Tiffany Glass
SKY2-BLK-27W-LP2	Black	27	N/A	YES-18W	(Bone/Beige/Green) Tiffany Glass
SKY3-C-27W-LP3	Camel	27	N/A	YES-18W	Tiffany Glass
SKY3-G-27W-LP3	Verdigris	27	N/A	YES-18W	(Blue/Gray/Red) Tiffany Glass
SKY3-B-27W-LP3	Brown	27	N/A	YES-18W	(Blue/Gray/Red) Tiffany Glass
SKY3-BLK-27W-LP3	Black	27	N/A	YES-18W	(Blue/Gray/Red) Tiffany Glass
SKY4-C-27W-LP4	Camel	27	N/A	YES-18W	Cast Aluminum
SKY4-G-27W-LP4	Verdigris	27	N/A	YES-18W	Cast Aluminum
SKY4-B-27W-LP4	Brown	27	N/A	YES-18W	Cast Aluminum



FEATURES:

- ▶ Aluminum stanchions.
- ▶ Cast aluminum shades (SKYLP5, 6 & 7).
- ▶ Tiffany style shades (SKYLP8 & 9).
- ▶ 48" cable & 18W bulb incl.
- ▶ UL listed for wet location.
- ▶ Optional ground stake available.

MODEL	STANCHION COLOR	MAX WATTS	TYPE	BULB	SHADE TYPE
LOW VOLTAGE LANDSCAPE PATH LIGHTING					
SKY5-C-27W-LP5	Camel	27	N/A	YES-18W	Cast Aluminum
SKY5-G-27W-LP5	Verdigris	27	N/A	YES-18W	Cast Aluminum
SKY5-B-27W-LP5	Brown	27	N/A	YES-18W	Cast Aluminum
SKY5-BLK-27W-LP5	Black	27	N/A	YES-18W	Cast Aluminum
SKY6-C-27W-LP6	Camel	27	N/A	YES-18W	Cast Aluminum
SKY6-G-27W-LP6	Verdigris	27	N/A	YES-18W	Cast Aluminum
SKY6-B-27W-LP6	Brown	27	N/A	YES-18W	Cast Aluminum
SKY6-BLK-27W-LP6	Black	27	N/A	YES-18W	Cast Aluminum
SKY7-C-27W-LP7	Camel	27	N/A	YES-18W	Cast Aluminum
SKY7-G-27W-LP7	Verdigris	27	N/A	YES-18W	Cast Aluminum
SKY7-B-27W-LP7	Brown	27	N/A	YES-18W	Cast Aluminum
SKY7-BLK-27W-LP7	Black	27	N/A	YES-18W	Cast Aluminum
SKY8-C-27W-LP8	Camel	27	N/A	YES-18W	Tiffany Glass
SKY8-G-27W-LP8	Verdigris	27	N/A	YES-18W	(Bone/Beige/Green) Tiffany Glass
SKY8-B-27W-LP8	Brown	27	N/A	YES-18W	(Bone/Beige/Green) Tiffany Glass
SKY8-BLK-27W-LP8	Black	27	N/A	YES-18W	(Bone/Beige/Green) Tiffany Glass
SKY9-C-27W-LP9	Camel	27	N/A	YES-18W	Tiffany Glass
SKY9-G-27W-LP9	Verdigris	27	N/A	YES-18W	(Blue/Gray/Red) Tiffany Glass
SKY9-B-27W-LP9	Brown	27	N/A	YES-18W	(Blue/Gray/Red) Tiffany Glass
SKY9-BLK-27W-LP9	Black	27	N/A	YES-18W	(Blue/Gray/Red) Tiffany Glass

LANDSCAPE DIRECTIONAL LIGHTING



FEATURES:

- ▶ Heavy duty die cast aluminum housing w/48" cable (SKYLD1, 3 & 4).
- ▶ UltraCoat multistage finish (SKYLD1, 3 & 4).
- ▶ PVC housing w/48" cable (SKYLD5) and adjustable gimbal ring.
- ▶ Silicone rubber gasket to prevent leakage.
- ▶ UL listed for wet location.
- ▶ Optional ground stake available.

MODEL	FINISH	WATTS	TYPE	LAMP	BALLAST
LOW VOLTAGE LANDSCAPE LIGHTING - DIRECTIONAL AND WELL LIGHTING					
SKY1-C-50W-LD1	Camel	50	MR16	YES-20W	N/A
SKY1-G-50W-LD1	Verdigris	50	MR16	YES-20W	N/A
SKY1-B-50W-LD1	Brown	50	MR16	YES-20W	N/A
SKY3-C-50W-LD3	Camel	50	MR16	NO	N/A
SKY3-G-50W-LD3	Verdigris	50	MR16	NO	N/A
SKY3-B-50W-LD3	Brown	50	MR16	NO	N/A
SKY4-C-75W-LD4	Camel	75	PAR36	NO	N/A
SKY4-G-75W-LD4	Verdigris	75	PAR36	NO	N/A
SKY4-B-75W-LD4	Brown	75	PAR36	NO	N/A
SKY4-BLK-75W-LD4	Black	75	PAR36	NO	N/A
SKY5-GR-75W-LD5	Black	75	PAR36	NO	N/A

VAPOR PROOF

Vapor Proof Fixtures Available in either Fluorescent or Incandescent.

SKYVP1-4
Vapor Proof
Pendant Mount
(Incandescent
Series shown)



SKYVW1-4
Vapor Proof
Wall Mount
(Incandescent
Series shown)



SKYVS5-6
Vapor Proof
Surface Mount
(Fluorescent
Series shown)

FEATURES:

- ▶ Heavy duty die cast aluminum housing screw-on guard.
- ▶ UltraCoat multistage finish.
- ▶ Repaintable gray finish.
- ▶ Tempered clear glass globe.
- ▶ Silicone rubber gasket to prevent leakage.
- ▶ Available in 1/2" or 3/4" NPT.
- ▶ Box & wall mount styles include weatherproof box.
- ▶ UL listed for wet location.
- ▶ Wire guards available.

ORDER INFO

MODEL	VOLTS	WATTS	TYPE	LAMP	BALLAST
SKY1-2001-1/2"-VP1	120	200	1/2" Pendant	NO-Incandescent	N/A
SKY2-2001-3/4"-VP2	120	200	3/4" Pendant	NO-Incandescent	N/A
SKY3-3001-1/2"-VP3	120	300	1/2" Pendant	NO-Incandescent	N/A
SKY4-3001-3/4"-VP4	120	300	3/4" Pendant	NO-Incandescent	N/A
SKY5-13CF-120-1/2"-VP5	120	13	1/2" Pendant	NO-Incandescent	Magnetic
SKY6-13CF-120-3/4"-VP6	120	13	3/4" Pendant	YES-13WCF	Magnetic
SKY1-2001-1/2"-VS1	120	200	1/2" Box	NO-Incandescent	N/A
SKY2-2001-3/4"-VS2	120	200	3/4" Box	NO-Incandescent	N/A
SKY3-3001-1/2"-VS3	120	300	1/2" Box	NO-Incandescent	N/A
SKY4-3001-3/4"-VS4	120	300	3/4" Box	NO-Incandescent	N/A
SKY5-13CF-120-1/2"-VS5	120	13	1/2" Box	YES-13WCF	Magnetic
SKY6-13CF-120-3/4"-VS6	120	13	3/4" Box	YES-13WCF	Magnetic
SKY1-2001-1/2"-VW1	120	200	1/2" Wall	NO-Incandescent	N/A
SKY2-2001-3/4"-VW2	120	200	3/4" Wall	NO-Incandescent	N/A
SKY3-3001-1/2"-VW3	120	300	1/2" Wall	NO-Incandescent	N/A
SKY4-3001-3/4"-VW4	120	300	3/4" Wall	NO-Incandescent	N/A
SKY5-13CF-1/2"-VW5	120	13	1/2" Wall	YES-13WCF	Magnetic
SKY6-13CF-3/4"-VW6	120	13	3/4" Wall	YES-13WCF	Magnetic

LANDSCAPE LIGHTING - ACCESSORIES



SKYLA1
ABS
Ground Stake



SKYLA2
ABS
Cable Connector



SKYLA3
PAR 39
Quick Connect



SKYLA4
TRANSFORMER
Black or Stainless Steel
(BK or SS)



SKYLA5
TRANSFORMER
Black or Stainless Steel
(BK or SS)



SKYLA7
MR16
Halogen Lamp



SKYLA8
PAR36
Halogen Lamp



SKYLA10
WIRE
500 ft. Spool

LANDSCAPE LIGHTING - SPECIALTY

FEATURES:

- ▶ Heavy duty die cast aluminum housing w/powder coated bronze finish (SKYLS1, 2 & 4).
- ▶ UltraCoat multistage finish (SKYLS1, 2 & 4).
- ▶ Stamped steel louver (SKYLS3).
- ▶ Silicone rubber gasket to prevent leakage.
- ▶ UL listed for wet location.



SKYLS1
EYELID
Step Light



SKYLS4
AQUATICA
Underwater
Light



SKYLS2
SCOOP
Step Light



SKYLS3
LOUVERED
Step Light

ORDER INFO

MODEL	VOLTS	WATTS	TYPE	LAMP	DESCRIPTION
LOW VOLTAGE LANDSCAPE LIGHTING					
SKY1-W-27W-LS1	27	N/A	YES-18W	YES-18W	EYELID STEP
SKY1-G-27W-LS1	27	N/A	YES-18W	YES-18W	EYELID STEP
SKY2-G-27W-LS2	27	N/A	YES-18W	YES-18W	SCOOP STEP
SKY2-BRO-27W-LS2	27	N/A	YES-18W	YES-18W	SCOOP STEP
SKY3-BRO-27W-LS3	27	N/A	YES-18W	YES-18W	LOUVERED STEP
SKY3-BLK-27W-LS3	27	N/A	YES-18W	YES-18W	LOUVERED STEP
SKY4-BLK-35W-LS4	35	N/A	WATERTIGHT	NO	UNDERWATER

ORDER INFO

MODEL	DIMENSIONS	WATTS	TYPE	FINISH	BALLAST
LOW VOLTAGE LANDSCAPE LIGHTING ACCESSORIES					
SKY1-LA1	8.75"H x 1.75"W	N/A	N/A	N/A	Ground Stake
SKY2-LA2	2.25"H x 1.5"W	N/A	N/A	N/A	Cable Connector
SKY3-LA3	25' CABLE	N/A	N/A	N/A	PAR 38 Quick Connect
SKY4-BLK-150W-LA4	11.25"H x 3.625"W	150	N/A	Black	Transformer
SKY4-BLK-300W-LA4	11.5"H x 4.25"W	300	N/A	Black	Transformer
SKY4-BLK-600W-LA4	12.625"H x 5.625"W	600	N/A	Black	Transformer
SKY5-SS-150W-LA5	11.25"H x 3.625"W	150	N/A	Stainless Steel	Transformer
SKY5-SS-300W-LA5	11.5"H x 4.25"W	300	N/A	Stainless Steel	Transformer
SKY5-SS-600W-LA5	12.625"H x 5.625"W	600	N/A	Stainless Steel	Transformer
SKY5-SS-900W-LA5	16.25"H x 6.25"W	900	N/A	Stainless Steel	Transformer
SKY7-20W-LA7	N/A	20	MR16	N/A	Halogen
SKY7-35W-LA7	N/A	35	MR16	N/A	Halogen
SKY7-50W-LA7	N/A	50	MR16	N/A	Halogen
SKY8-35W-LA8	N/A	35	PAR36	N/A	Halogen
SKY8-50W-LA8	N/A	50	PAR36	N/A	Halogen
SKY10-10W-LA10	N/A	N/A	N/A	N/A	500 ft. Wire Spool
SKY10-12W-LA10	N/A	N/A	N/A	N/A	500 ft. Wire Spool
SKY6-18W-LVLA6	N/A	18	N/A	N/A	S/C Bayonet



FLUORESCENT HIGH BAY

SKYHB-4T5

Energy Efficient with four T5 lamps.



FEATURES:

- ▶ Dimensions: 49" L x 13.37" W x 4.72" H.
- ▶ Ideal for both 120v or 277v applications.
- ▶ High power factor, CEE approved ballast.
- ▶ Precision formed reflector to achieve maximum light output, total reflection: 91% min.
- ▶ "S" hooks & chain included.

ORDER INFO

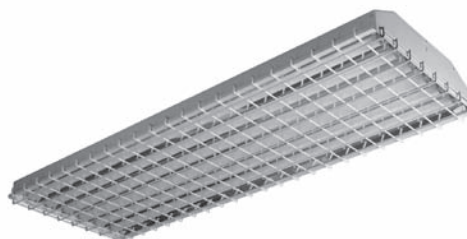
SERIES	VOLTAGE	INPUT POWER	LAMP TYPE	WIRE GUARD
SKYHB4T5	120-277	220	4 x T5 54 Watt HO Lamps	Yes

Acrylic lens, both wrap and flat available. Consult factory.

FLUORESCENT HIGH BAY

SKYHB-6T5

Energy Efficient with six T5 lamps.



FEATURES:

- ▶ Dimensions: 49" L x 18.34" W x 4.72" H.
- ▶ Ideal for both 120v or 277v applications.
- ▶ High power factor, CEE approved ballast.
- ▶ Precision formed reflector to achieve maximum light output, total reflection: 91% min.
- ▶ "S" hooks & chain included.

ORDER INFO

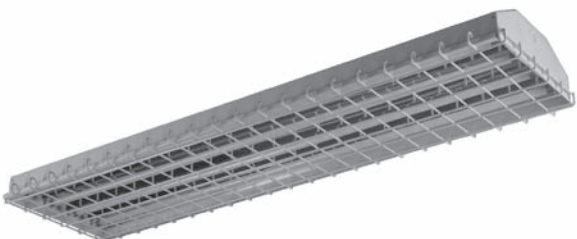
SERIES	VOLTAGE	INPUT POWER	LAMP TYPE	WIRE GUARD
SKYHB-6T5	120-277	330	6 x T5 54 Watt HO Lamps	Yes

Acrylic lens, both wrap and flat available. Consult factory.

FLUORESCENT HIGH BAY

SKYHB-4T8

Energy Efficient with four T8 lamps.



FEATURES:

- ▶ Dimensions: 49" L x 13.37" W x 4.72" H.
- ▶ Ideal for both 120v or 277v applications.
- ▶ High power factor, CEE approved ballast.
- ▶ Precision formed reflector to achieve maximum light output, total reflection: 91% min.
- ▶ "S" hooks & chain included.

ORDER INFO

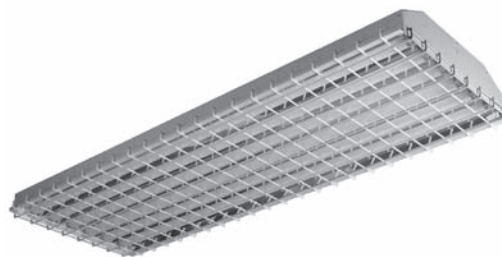
SERIES	VOLTAGE	INPUT POWER	LAMP TYPE	WIRE GUARD
SKYHB-4T8	120-277	152	4 x T8 32 Watt Lamps	Yes

Acrylic lens, both wrap and flat available. Consult factory.

FLUORESCENT HIGH BAY

SKYHB-6T8

Energy Efficient with six T8 lamps.



FEATURES:

- ▶ Dimensions: 49" L x 18.34" W x 4.72" H.
- ▶ Ideal for both 120v or 277v applications.
- ▶ High power factor, CEE approved ballast.
- ▶ Precision formed reflector to achieve maximum light output, total reflection: 91% min.
- ▶ "S" hooks & chain included.

ORDER INFO

SERIES	VOLTAGE	INPUT POWER	LAMP TYPE	WIRE GUARD
SKYHB-6T8	120-277	220	6 x T8 32 Watt Lamps	Optional

Acrylic lens, both wrap and flat available. Consult factory.

FLUORESCENT HIGH BAY

SKYHXL432MV

Energy efficient with four T8 lamps



FEATURES:

- ▶ Dimensions: 48.125" L x 12.5" W x 3.875" H.
- ▶ Replaces H.I.D. fixtures one-to-one.
- ▶ Die-formed heavy-gauged cold rolled steel.
- ▶ Precision formed beveled reflector to achieve maximum light output.

ORDER INFO

SERIES	VOLTAGE	INPUT POWER	LAMP TYPE	REFLECTOR TYPE
SKYHXL432MV	Universal	152	4 x T8 32 Watt Lamps	White Aluminum

FLUORESCENT HIGH BAY

SKYHXL632MV

Energy efficient with six T8 lamps



FEATURES:

- ▶ Dimensions: 48.125" L x 17.5" W x 3.875" H.
- ▶ Replaces H.I.D. fixtures one-to-one.
- ▶ Die-formed heavy-gauged cold rolled steel.
- ▶ Precision formed beveled reflector to achieve maximum light output.

ORDER INFO

SERIES	VOLTAGE	INPUT POWER	LAMP TYPE	REFLECTOR TYPE
SKYHXL632MV	Universal	220	6 x T8 32 Watt Lamps	White Aluminum

FLUORESCENT HIGH BAY

SKYHXL454MV

Energy efficient with four T5 lamps



FEATURES:

- ▶ Dimensions: 48.125" L x 12.5" W x 3.875" H.
- ▶ 20,000 Lumens from four T5HO lamps, replaces H.I.D. fixtures one-to-one.
- ▶ Die-formed heavy-gauged cold rolled steel.
- ▶ Precision formed beveled reflector to achieve maximum light output.

ORDER INFO

SERIES	VOLTAGE	INPUT POWER	LAMP TYPE	REFLECTOR TYPE
SKYHXL454MV	Universal	220	4 x T5 HO 54 Watt Lamps	95% Reflective Aluminum

FLUORESCENT HIGH BAY

SKYHXL654MV

Energy efficient with six T5 lamps



FEATURES:

- ▶ Dimensions: 48.125" L x 17.5" W x 3.875" H.
- ▶ 30,000 Lumens from six T5HO lamps, replaces H.I.D. fixtures one-to-one.
- ▶ Die-formed heavy-gauged cold rolled steel.
- ▶ Precision formed beveled reflector to achieve maximum light output.

ORDER INFO

SERIES	VOLTAGE	INPUT POWER	LAMP TYPE	REFLECTOR TYPE
SKYHXL654MV	Universal	330	6 x T5 HO 54 Watt Lamps	95% Reflective Aluminum

FLUORESCENT TROFFER

SKYPBT

Fluorescent Parabolic troffers with 95% specular reflectors provide more light while using fewer lamps than standard troffers. Reflectors are designed so all cells are brightly lit while using only 2 lamps instead of the 3 used in standard parabolic troffers.

Designed for new construction or retrofitting existing buildings.



FEATURES:

- ▶ Fluorescent Parabolic Troffer uses modern T8 or T5 HO type lamps.
- ▶ 22 gauge steel housing with Miro-4 95% specular aluminum reflectors standard.
- ▶ Electronic High Efficiency Multi-volt ballast (120-277).
- ▶ Fits in all suspended ceilings where standard troffers are called for.

ORDER INFO

LENGTH	NO. OF LAMPS	LAMP TYPE	T8 BALLAST OPTIONS	T5 BALLAST OPTIONS	REFLECTOR
22 = 2x2'	2L=2 Lamps	T8 F32 T8	DH = Dual Voltage (120-277) HLO	D = T5 Dual Voltage 120-277 volt	R = 95% Specular Reflector
24 = 2x4'	3L = 3 Lamps	T5 = T5 HO	N277 = Normal 277 Volt	90 = T5 90 Degrees C 120-277 volt	R87 = 87% Specular Reflector
			N120 = Normal 120 Volt	480 = T5 347-480 volt	W = White
			NUNV = Normal 120-277 Volt	CW = T5 (Cold Weather) -22 Degrees Fahrenheit	RF = 95% Specular Focused
			BL120 = Bi-Level 120 Volt		
			BL277 = Bi-Level 277 Volt		
			347N = Normal 347 Volt		
			480H = 480 Volt HLO		
			PRS120 = Program Rapid Start Normal 120 Volt		
			PRS277 = Program Rapid Start Normal 277 Volt		
			PRSUN = Program Rapid Start Normal 120-277 Volt		
			PRSUH = Program Rapid Start HLO 120-277 Volt		
			CW = Cold Weather (-22 Degrees Fahrenheit)		

FLUORESCENT TROFFER

SKYDPIT

Fluorescent Direct/Indirect troffers eliminate glare while providing significant energy saving performance. Reflector basket can be either solid or perforated.

Designed for new construction or retrofitting existing buildings. Outstanding efficiencies from a Skyline troffer with computer-designed specular reflector enable the user to cut costs by 50% or more.



FEATURES:

- ▶ Fluorescent Direct/Indirect Troffer uses modern T8 or T5 HO type lamps.
- ▶ 22 gauge steel housing with Miro-4 95% specular aluminum reflectors standard.
- ▶ Electronic High Efficiency Multi-volt ballast (120 - 277).
- ▶ Fits in all suspended ceilings where standard troffers are called for.

ORDER INFO

NO. OF LAMPS	LAMP TYPE	T8 BALLAST OPTIONS	T5 BALLAST OPTIONS	REFLECTOR
2L = 2 Lamps	T8 = F32 T8	DH = Dual Voltage (120-277) HLO	D = T5 Dual Voltage 120-277 volt	R = 95% Specular Reflector
3L = 3 Lamps	T5 = T5 HO	N277 = Normal 277 Volt	90 = T5 90 Degrees C 120-277 volt	R87 = 87% Specular Reflector
		N120 = Normal 120 Volt	480 = T5 347-480 volt	W = White
		NUNV = Normal 120-277 Volt	CW = T5 (Cold Weather) -22 Degrees Fahrenheit	RF = 95% Specular Focused
		BL120 = Bi-Level 120 Volt		
		BL277 = Bi-Level 277 Volt		
		347N = Normal 347 Volt		
		480H = 480 Volt HLO		
		PRS120 = Program Rapid Start Normal 120 Volt		
		PRS277 = Program Rapid Start Normal 277 Volt		
		PRSUN = Program Rapid Start Normal 120-277 Volt		
		PRSUH = Program Rapid Start HLO 120-277 Volt		
		CW = Cold Weather (-22 Degrees Fahrenheit)		

FLUORESCENT TROFFER

SKYPT

Fluorescent Troffer with Miro-4 95% specular reflectors and electronic ballasts (T8). Available in 2 x 2 FT or 2 x 4 FT enclosures.

Designed for new construction or retrofitting existing buildings. Outstanding efficiencies from a Skyline troffer with computer-designed specular reflector enable the user to cut costs by 50% or more.



FEATURES:

- ▶ Fluorescent Troffer uses modern F32 T8 or T5 HO lamps.
- ▶ 22 gauge steel housing with Miro-4 95% specular aluminum reflectors standard.
- ▶ Electronic High Efficiency Multi-volt ballast (120 - 277).
- ▶ Fits in all suspended ceilings where standard troffers are called for, 2 x 2 FT or 2 x 4 FT.
- ▶ PRS = Program Rapid Start Normal.

ORDER INFO

LENGTH	NO. OF LAMPS	LAMP TYPE	BALLAST	REFLECTOR
22 = 2 x 2'	2L = 2 Lamps	T8 = F32 T8	DH = Dual Voltage (120-277) (120-277) HLD	95% Specular Reflector
24 = 2 x 4'	4L = 4 Lamps 6L = Lamps	T5 = T5 HO	N277 = Normal 277 Volt N120 = Normal 120 Volt NUNV = Normal 120-277 Volt BL120 = Bi-Level 120 Volt BL277 = Bi-Level 277 Volt 347N = Normal 347 Volt 480H = 480 Volt HLD PRS120 = PRS 120 Volt PRS277 = PRS 277 Volt PRSUN = PRS 120-277 Volt PRSUH = PRS HLD 120-277 Volt CW = Cold Weather (-22°F)	R87 = 87% Specular Reflector W = White RF = 95% Specular Focused

INDUSTRIAL STRIP

SKYP-F-4232-R



FEATURES:

- ▶ 4ft. 2 Lamp T8 fixture.
- ▶ Available with several ballast factors.
- ▶ Reflectors available with several types of reflectances from 85% to 95%.
- ▶ Light distribution available from focused to broad.
- ▶ Also available in 8ft. 4 Lamp.

WRAP FIXTURES

SKYWA1



FEATURES:

- ▶ WRAP AROUND fluorescent fixture.
- ▶ High power factor Electronic Ballast.
- ▶ Available in T8 and T5 lamps.

ORDER INFO

SERIES	LENGTH	HPF BALLAST	NO. OF LAMPS	LAMP TYPE	VOLTAGE
SKYWA1-224E-UNV	24"	YES	2	T8 / T5	UNV
SKYWA1-248E-UNV	48"	YES	2	T8 / T5	UNV
SKYWA1-448E-UNV	48"	YES	4	T8 / T5	UNV
SKYWA1-496-UNV	96"	YES	4	T8 / T5	UNV

LAMPS

SKYF1

Both T8 and T5 Fluorescent Lamps



FEATURES:

- ▶ T8 available in 700 and 800 Series
- ▶ T8 available in 54 and 28 Watt
- ▶ All Color Temperatures are available
- ▶ Sold only in case quantities

CHANNEL FIXTURES

SKYSC1



FEATURES:

- ▶ SINGLE CHANNEL fluorescent fixture.
- ▶ High power factor Electronic Ballast.
- ▶ Uses T8 and T5 lamps.

SERIES	LENGTH	HPF BALLAST	NO. OF LAMPS	LAMP TYPE	VOLTAGE
SKYSC1-124E-120	24"	Yes	1	T8 / T5	120/277
SKYSC1-136E-120	36"	Yes	1	T8 / T5	120/277
SKYSC1-148E-120	48"	Yes	1	T8 / T5	120/277

ORDER INFO

CHANNEL FIXTURES

SKYDC1

Double Channel Fluorescent Fixture



FEATURES:

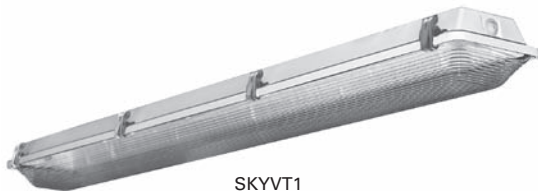
- ▶ DOUBLE CHANNEL fluorescent fixture.
- ▶ High power factor Electronic Ballast.
- ▶ Uses T8 and T5 lamps.

SERIES	LENGTH	HPF BALLAST	NUMBER OF LAMPS	LAMP TYPE	VOLTAGE
SKYDC1-224E-120	24"	Yes	2	T8 / T5	120/277
SKYDC1-236E-120	36"	Yes	2	T8 / T5	120/277
SKYDC1-248E-120	48"	Yes	2	T8 / T5	120/277
SKYDC1-296E-120	96"	Yes	4	T8 / T5	120/277

ORDER INFO

VAPOR TIGHT LIGHTING

SKYVT1 Vapor Tight*



SKYVT1
VAPORTIGHT

FEATURES:

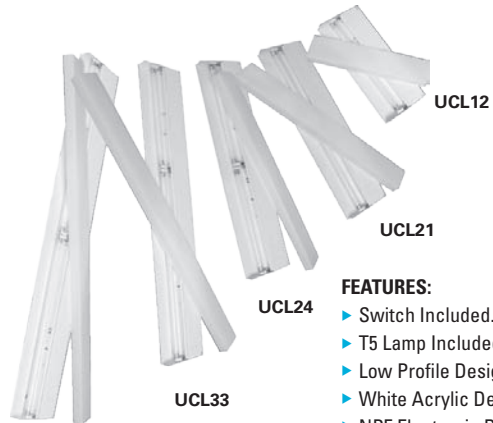
- ▶ Polycarbonate housing & diffuser.
- ▶ Silicone rubber gasket to prevent leakage.
- ▶ Stainless steel mounting bracket & lens clips.
- ▶ Ballast tray hangs from nylon tether for easy installation.
- ▶ Includes conduit hub for Wet Location standard.

* 1-lamp options are available in 2 foot & 4 foot.

MODEL	VOLTS	WATTS	TYPE	LAMP	BALLAST
SKY1-2x32T8-MT-VT1	120/277	64	T8	NO	ELECTRONIC
SKY2-2x54T5-MT-VT2	120/277	108	T5HO	NO	ELECTRONIC
SKY3-4x32T8-MT-VT3	120/277	113	T8	NO	ELECTRONIC
SKY4-4x54T5-MT-VT4	120/277	220	T5HO	NO	ELECTRONIC

ORDER INFO

UNDER CABINET LIGHTING



FEATURES:

- ▶ Switch Included.
- ▶ T5 Lamp Included.
- ▶ Low Profile Design.
- ▶ White Acrylic Defuser.
- ▶ NPF Electronic Ballast.

	Length	Width	Normal Power Factor Ballast	Number of Bulbs	Lamp Type	Volt
UCL12	12"	3" or 5"	Normal	1	(1) 8 watt T5	120
UCL21	21"	3" or 5"	Normal	1	(1) 13 watt T5	120
UCL24	24"	3" or 5"	Normal	2	(1) 8 watt T5	120
UCL33	33"	3" or 5"	Normal	2	(1) 8 watt T5	120
					(1) 13 watt T5	120
UCL42	42"	3" or 5"	Normal	2	(2) 13 watt T5	120

ORDER INFO

Fluorescent Emergency Lighting Ballasts



Fluorescent Emergency Lighting Ballasts

EMERGENCY BALLAST

EMB-32 (450 Lumen Output)

The EMB fluorescent emergency ballast allows the same fixture to be used for both normal and emergency operation.

In the event of a power failure, the EMB switches to the emergency mode and operates one of the existing lamps for a minimum of 90 minutes.

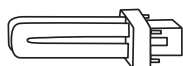
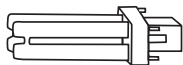
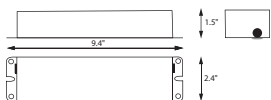
The unit contains a battery, charger and inverter circuit in a single package. The EMB can be mounted in the wireway or on top of the fixture, and is UL listed for factory installation or retrofit applications.



LAMP RATING CHART:

Operates One Lamp

Lamp Range	Style	Types
17 Watt	T8, T10, T12	Rapid Start
Through 40 Watt	U-Lamp	Slimline
4-Foot Max	Compact	Ho, VHo



ORDER INFO

MODEL	EMB-32
Lumens	450
Linear Lamps	# Supported
2'-4' Rapid, Instant, or Energy Savings, T8-T12	1
8W-25W-T5	1
2'-8' Rapid, Instant, or Energy Savings, T8-T12, HO, VHO	
20W - 40W Circline	1
Compact Lamps	# Supported
17W-40W (4-Pin)	1
13W-42W Twin, Quad or Triple (4-pin)	
40W Biax	
45W Biax	
50W Biax	
55W Biax	

* All ballasts are standard with dual 120/277 volt input and are damp location rated

EMERGENCY BALLAST

EMB-CF (650 Lumen Output)

The EMB fluorescent emergency ballast allows the same fixture to be used for both normal and emergency operation.

In the event of a power failure, the EMB switches to the emergency mode and operates one or two of the existing lamps for a minimum of 90 minutes.

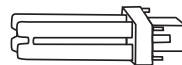
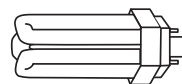
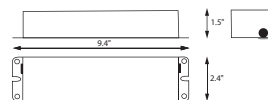
The unit contains a battery, charger and inverter circuit in a single package. The EMB can be mounted in the wireway or on top of the fixture, and is UL listed for factory installation or retrofit applications.



LAMP RATING CHART:

2-Pin and 4-Pin Available

Lamp Type	Wattage	Base
Quad	10,13,18,26	G24d
Triple	13,18,26	GX24d



ORDER INFO

MODEL	EMB-CF
Lumens	650
Linear Lamps	# Supported
2'-4' Rapid, Instant, or Energy Savings, T8-T12	
2'-8' Rapid, Instant, or Energy Savings, T8-T12, HO, VHO	
20W - 40W Circline	
Compact Lamps	# Supported
13, 18, 26, 39 (4-Pin)	1 or 2
13W-42W Twin, Quad or Triple (4-pin)	1
40W Biax	
45W Biax	
50W Biax	
55W Biax	

* All ballasts are standard with dual 120/277 volt input and are damp location rated

EMERGENCY BALLAST

EMB-5 (500 Lumen Output)

The EMB fluorescent emergency ballast allows the same fixture to be used for both normal and emergency operation.

In the event of a power failure, the EMB switches to the emergency mode and operates one of the existing lamps for a minimum of 90 minutes.

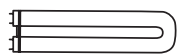
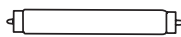
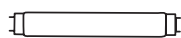
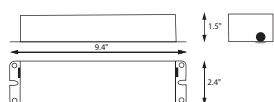
The unit contains a battery, charger and inverter circuit in a single package. The EMB can be mounted in the wireway or on top of the fixture, and is UL listed for factory installation or retrofit applications.



LAMP RATING CHART:

Operates One Lamp

Lamp Range	Style	Types
17 Watt	T8, T10, T12	Rapid Start
Through 40 Watt	U-Lamp	Slimline
4-Foot Max	Compact	Ho, VHo



ORDER INFO

MODEL	EMB-5
Lumens	500
Linear Lamps	# Supported
2'-4' Rapid, Instant, or Energy Savings, T8-T12	1
8W-25WT5	1
2'-8' Rapid, Instant, or Energy Savings, T8-T12, HO, VHO	
20W - 40W Circline	1
Compact Lamps	# Supported
13, 18, 26 (4-Pin)	1
13W-42W Twin, Quad or Triple (4-pin)	
40W Biax	
45W Biax	
50W Biax	
55W Biax	

* All ballasts are standard with dual 120/277 volt input and are damp location rated

EMERGENCY BALLAST

EMB-7 (700 Lumen Output)

The EMB fluorescent emergency ballast allows the same fixture to be used for both normal and emergency operation.

In the event of a power failure, the EMB switches to the emergency mode and operates one or two of the existing lamps for a minimum of 90 minutes.

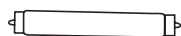
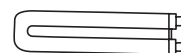
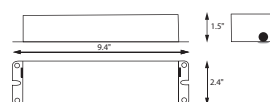
The unit contains a battery, charger and inverter circuit in a single package. The EMB can be mounted in the wireway or on top of the fixture, and is UL listed for factory installation or retrofit applications.



LAMP RATING CHART:

Operates One or Two Lamps

Lamp Range	Style	Types
17 Watt	T8, T10, T12	Rapid Start
Through 215 Watt	U-Lamp	Slimline
8-Foot Max	Compact	Ho, VHo



ORDER INFO

MODEL	EMB-7
Lumens	700
Linear Lamps	# Supported
2'-4' Rapid, Instant, or Energy Savings, T8-T12	1 or 2
2'-8' Rapid, Instant, or Energy Savings, T8-T12, HO, VHO	1
20W - 40W Circline	1
8W - 28WT5	1 or 2
Compact Lamps	# Supported
13, 18, 26, 39 (4-Pin)	1 or 2
13W-42W Twin, Quad or Triple (4-pin)	1
17W-40W (4-pin)	1
40W Biax	1
45W Biax	
50W Biax	1
55W Biax	1

* All ballasts are standard with dual 120/277 volt input and are damp location rated

EMERGENCY BALLAST

EMB-11 (1400 Lumen Output)

The EMB fluorescent emergency ballast allows the same fixture to be used for both normal and emergency operation.

In the event of a power failure, the EMB switches to the emergency mode and operates one or two of the existing lamps for a minimum of 90 minutes.

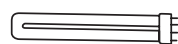
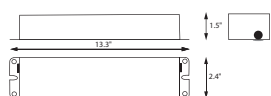
The unit contains a battery, charger and inverter circuit in a single package. The EMB can be mounted in the wireway or on top of the fixture, and is UL listed for factory installation or retrofit applications.



LAMP RATING CHART:

Operates One or Two Lamps

Lamp Range	Style	Types
17 Watt	T8, T10, T12	Rapid Start
Through 215 Watt	U-Lamp	Slimline
8-Foot Max	Compact	Ho, VHo



* All ballasts are standard with dual 120/277 volt input and are damp location rated

ORDER INFO

MODEL	EMB-11
Lumens	1400
Linear Lamps	# Supported
2'-4' Rapid, Instant, or Energy Savings, T8-T12	1 or 2
8W-28WT5	1 or 2
2'-8' Rapid, Instant, or Energy Savings, T8-T12, HO, VHO	1
20W - 40W Circline	1 or 2
54W-T5HO	1 or 2
Compact Lamps	# Supported
13, 18, 26, 39 (4-Pin)	1 or 2
13W-42W Twin, Quad or Triple (4-pin)	1
17W-40W (4-pin)	1 or 2
40W Biax	1
45W Biax	
50W Biax	1
55W Biax	1

EMERGENCY BALLAST

EMB-14 (3000 Lumen Output)

The EMB fluorescent emergency ballast allows the same fixture to be used for both normal and emergency operation.

In the event of a power failure, the EMB switches to the emergency mode and operates one or two of the existing lamps for a minimum of 90 minutes.

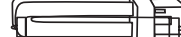
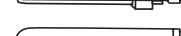
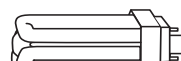
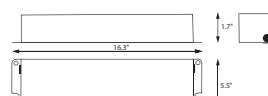
The unit contains a battery, charger and inverter circuit in a single package. The EMB can be mounted in the wireway or on top of the fixture, and is UL listed for factory installation or retrofit applications.



LAMP RATING CHART:

Operates One or Two Lamps

Lamp Range	Style	Types
17 Watt	T8, T10, T12	Rapid Start
Through 215 Watt	U-Lamp	Slimline
8-Foot Max	Compact	Ho, VHo



* All ballasts are standard with dual 120/277 volt input and are damp location rated

ORDER INFO

MODEL	EMB-14
Lumens	3000
Linear Lamps	# Supported
2'-4' Rapid, Instant, or Energy Savings, T8-T12	1 or 2
8W-28WT5	1 or 2
2'-8' Rapid, Instant, or Energy Savings, T8-T12, HO, VHO	1
20W - 40W Circline	1 or 2
54W-T5HO	1 or 2
Compact Lamps	# Supported
13, 18, 26, 39 (4-Pin)	1
13W-42W Twin, Quad or Triple (4-pin)	1
17W-20W (4-pin)	1 or 2
40W Biax	1
45W Biax	
50W Biax	1
55W Biax	1
16-38W (4-pin) (GR10q base)	1 or 2



Skyline Lighting is pleased to announce that beginning in 2010 we will be offering Induction Lighting to our customers. In the search for a long-life, energy efficient light source, Induction has been rediscovered, particularly for exterior applications where long life, lumen maintenance and adverse temperature protection is required. Skyline's initial offering is nine (9) popular types, and during the course of the year more will be added depending upon demand.

Induction is not experimental or cutting edge, but "state-of-the-art." It was invented in the 19th century and even as a state-of-the-art source, goes back to the 1990's. Induction works on a wholly different platform from any other light source. The lamp is operated without the use of an electrode and the energy is transmitted to the lamp through the use of a high frequency (induction) magnetic field. The gas inside the lamp is excited by the magnetic field producing visible light in a fashion similar to fluorescent.

THE BENEFITS OF INDUCTION LIGHTING

- **50% - 70% Energy Savings**
- **ULTRA LONG LIFE up to 100,000 HOURS**
- **HIGH LUMEN MAINTENANCE over its lifetime**
- **HIGH TEMPERATURE RELIABILITY**
- **OUTSTANDING COLOR PERFORMANCE**
with NO SHIFT OVER LAMP LIFE
- **HIGH EFFICACY — highest amount**
of lumens per watt

LARGE VANDAL-RESISTANT FIXTURE

SKYVN40HI



Dimensions:
12.375" square
x 8.625" deep

FEATURES:

- ▶ Die cast aluminum housing
- ▶ White Powdercoat Steel Reflector
- ▶ Clear prismatic polycarbonate lens
- ▶ 1/2" coin plugs with o-rings for conduit & photocell on two sides & back
- ▶ Mount directly over a 4" recessed outlet box, or use 1/2" surface conduit
- ▶ Textured architectural bronze powdercoat finish over a chromate conversion coating
- ▶ CSA rated for wet locations

ORDER INFO	SERIES	Wattage	Voltage	Lamp	Ballast
	SKYVN40HI40EL	40	120	Induction	Electronic

SEMI-CUTOFF WALL PACKS

SKYWPA15L & SKYWPA25L

Dimensions:
12" H
x 11.125" W
x 7.875" D



Dimensions:
13.25" H
x 16.5" W
x 10.625" D

FEATURES:

- ▶ Die cast aluminum housing
- ▶ Hinged front frame with stainless steel hinge pins
- ▶ 1/2" coin plugs with o-rings for conduit & photocell
- ▶ Includes safety cable to prevent front frame impact when relamping
- ▶ Aluminum reflector
- ▶ Prismatic borosilicate molded glass lens
- ▶ Cast-in template for mounting directly over a 4" recessed outlet box, or use 1/2" surface conduit
- ▶ Textured architectural bronze powdercoat finish over a chromate conversion coating
- ▶ Includes easy hang "hands free" wall-mounting plate with leveling device on back
- ▶ CSA rated for wet locations

ORDER INFO	SERIES	Wattage	Voltage	Lamp	Ballast
	SKYWPA15L40EL	40	120	Induction	Electronic
	SKYWPA25L80EL	80	120	Induction	Electronic

VANDAL-RESISTANT GARAGE LIGHT

SKYVNG40L



Dimensions:
15" diameter
x 11.25" deep

FEATURES:

- ▶ Die cast aluminum housing
- ▶ White Powdercoat Steel Reflector
- ▶ Extended clear prismatic polycarbonate lens
- ▶ 1/2" coin plugs with o-rings for conduit & photocell on sides & back
- ▶ Built-in template for mounting directly over a 4" recessed outlet box, or use 1/2" surface conduit, or downrod
- ▶ Textured architectural bronze powdercoat finish over a chromate conversion coating
- ▶ CSA rated for wet locations

ORDER INFO	SERIES	Wattage	Voltage	Lamp	Ballast
	SKYVNG40L80EL	80	120	Induction	Electronic

BRAVO WALL PACK

SKYB40I



Dimensions:
12.25" H
x 10.375" W
x 7.375" D

FEATURES:

- ▶ Die cast aluminum back housing
- ▶ Color matched polycarbonate front housing with clear ribbed lens
- ▶ White Powdercoat Steel Reflector
- ▶ Extended clear prismatic polycarbonate lens
- ▶ 1/2" coin plugs with o-rings for conduit & photocell
- ▶ Cast-in template for mounting over an electrical box
- ▶ Textured architectural bronze powdercoat finish over a chromate conversion coating
- ▶ CSA rated for wet locations

ORDER INFO	SERIES	Wattage	Voltage	Lamp	Ballast
	SKYB40I40EL	40	120	Induction	Electronic

16" FLOOD W/SMOOTH REFLECTOR

SKYFL70SI



Dimensions:
16.625" H
x 16.125" W
x 7" D

FEATURES:

- ▶ Die cast aluminum housing & hinged top frame
- ▶ 1/2" coin plugs with o-rings for conduit & photocell
- ▶ Textured architectural bronze powdercoat finish over a chromate conversion coating
- ▶ Aluminum smooth reflector
- ▶ Tempered flat clear glass lens
- ▶ Mount with two-piece swivel bracket, adjustable slipfitter, extruded mounting arms, yoke, or direct pole mount arm
- ▶ CSA rated for wet locations

ORDER INFO

SERIES	Wattage	Voltage	Lamp	Ballast	Mounting
SKYFL70SI80EL	80	120	Induction	Electronic	Bracket or Slipfitter

DELUXE HIGH BAY

SKYHB51I (shown w/refractor, sold separately)

FEATURES:

- ▶ Die cast aluminum housing
- ▶ 1/2" coin plugs with o-rings for conduit & photocell
- ▶ White powdercoat finish over a chromate conversion coating
- ▶ 1" malleable hook & deluxe accessory bracket included
- ▶ 22" prismatic acrylic refractor (Sold separately, required)
- ▶ Mount on hook or downrod
- ▶ Custom colors available upon request
- ▶ CSA listed for dry locations
- ▶ 16" body height



ORDER INFO

SERIES	Wattage	Voltage	Lamp	Ballast
SKYHB51I200EL	200	120	Induction	Electronic

WALLPACK W/HALF CUT-OFF FRAME

SKYW40HCI



Dimensions:
15" diameter
x 9.25" deep

FEATURES:

- ▶ 15" diameter die cast aluminum housing & half cutoff top frame
- ▶ 1/2" coin plugs with o-rings for conduit & photocell
- ▶ Textured bronze, black or wite powdercoat finish over a chromate conversion coating
- ▶ White powdercoat steel reflector
- ▶ Clear prismatic molded or frosted molded borosilicate glass lens
- ▶ Cast-in template for mounting directly over a 4" recessed outlet box, or use 1/2" surface conduit
- ▶ Includes easy hang "hands free" wall-mounting plate with leveling device on back
- ▶ CSA listed for wet locations

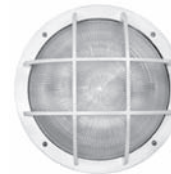
ORDER INFO

SERIES	Wattage	Voltage	Lamp	Ballast	Lens	Color
SKYWPR40H140EL	40	120	Induction	Electronic	C-Clear F-Frosted	B-Black W-White BR-Bronze

WALL PACKS: OPEN AND GRID FRAMES

SKYWPR40OFI & SKYWPR40GRI

Dimensions:
15" diameter
x 8.75" deep



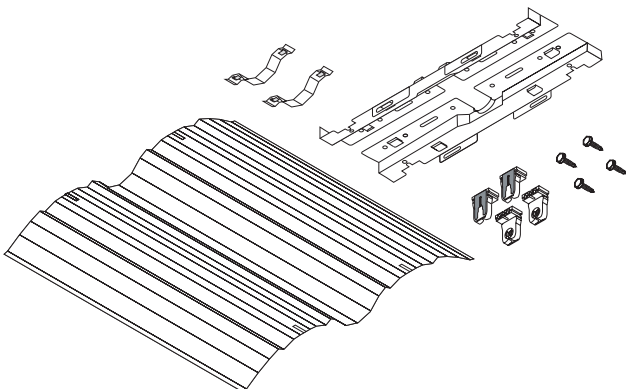
Dimensions:
15" diameter
x 9.25" deep

FEATURES:

- ▶ 15" diameter die cast aluminum housing & open or grid top frame
- ▶ 1/2" coin plugs with o-rings for conduit & photocell
- ▶ Textured bronze, black or wite powdercoat finish over a chromate conversion coating
- ▶ White powdercoat steel reflector
- ▶ Clear prismatic molded or frosted molded borosilicate glass lens
- ▶ Cast-in template for mounting directly over a 4" recessed outlet box, or use 1/2" surface conduit
- ▶ Includes easy hang "hands free" wall-mounting plate with leveling device on back
- ▶ CSA listed for wet locations

ORDER INFO

SERIES	Wattage	Voltage	Lamp	Ballast	Lenses	Colors
SKYWPR40OFI80EL	80	120	Induction	Electronic	C-Clear F-Frosted	B-Black W-White BR-Bronze
SKYWPR40GRI80EL	80	120	Induction	Electronic	C-Clear F-Frosted	B-Black W-White BR-Bronze



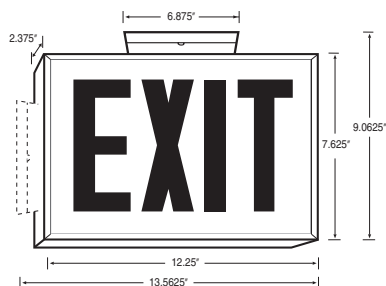
EXIT LIGHTING

Model SKYSXD Steel Exit Sign



FEATURES:

- ▶ Dimensions: 2.375" D x 12.25" W x 7.625" H.
- ▶ Double steel construction.
- ▶ Universal wall, ceiling or end mount available.
- ▶ Knockout directional chevrons.
- ▶ High output, ultra bright LEDs.
- ▶ Low power consumption.
- ▶ Emergency model uses long-life No-Cad battery.
- ▶ 25 year LED lamp life.
- ▶ Universal 120/277 VAC.
- ▶ Energy Star rated.



ORDER INFO

SERIES	Canopy	Color	Housing Color	Operation
SXD	U	Red Green	White Black	AC Only Battery Backup

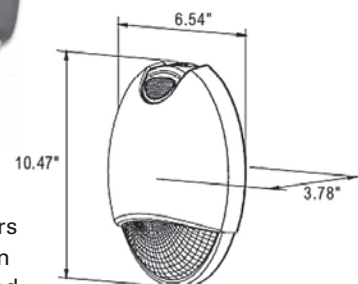
EMERGENCY LIGHTING

Model SKYDBEL

The SKYDBEL is an architectural emergency lighting unit offered in a low-profile, attractive housing. The sleek design blends seamlessly with any application and provides a contemporary alternative to typical "bug-eye" units. The SKYDBEL is ideal for retail stores, hotels, schools, restaurants, office buildings and many outdoor applications.



Housings available
in different finishes



The DBEL also offers
the perfect solution
for wet locations and
cold environments.

FEATURES:

- ▶ Low-profile, decorative die-cast emergency lighting fixture
- ▶ Standard powder-coated bronze finish
- ▶ Polycarbonate lens and mirrored reflector for maximum illumination
- ▶ Integrated test switch/pilot light
- ▶ 6-Volt NiCad battery standard
- ▶ Universal transformer for 120 or 277VAC @ 60Hz
- ▶ Two 6W Xenon lamps offer more light output than standard incandescent lamps
- ▶ Automatic, low-voltage disconnect (LVD)
- ▶ Designed for wall mount or conduit through the top
- ▶ Standard operating temperature of 32°F to 122°F
- ▶ Cold weather (CW) option: operating temperature down to -28°F
- ▶ Self-diagnostic models available
- ▶ ETL listed for wet location
- ▶ 5-Year Manufacturer's Warranty
- ▶ LED lights up only in non-emergency mode



ORDER INFO

SERIES	Voltage Input	Battery Type	Housing Color	LED Color (only available with Photocell)	Options
SKYDBEL	120V/277V	Nickel-Cadmium 2	Bronze White Black Nickel	White Green Blue Amber	Self Diagnostic Cold Weather Photocell

EMERGENCY LIGHTING

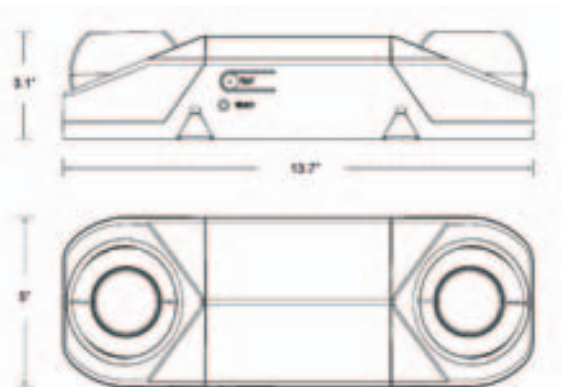
Model SKYRMR-16

Ideal for commercial and industrial facilities where economy, appearance and the ultimate ease of installation and maintenance are desired. Solid state electronics offer both reliability and low-cost performance.



FEATURES:

- ▶ Ultra-bright MR-16 halogen lamps
- ▶ 6-Volt, sealed lead acid, rechargeable, maintenance-free battery
- ▶ Completely self-contained
- ▶ Fully automatic operation
- ▶ Compact, low-profile design
- ▶ Automatic, low-voltage disconnect (LVD)
- ▶ Push-to-test switch
- ▶ Dual voltage, 120/277VAC operation
- ▶ UL listed for damp location



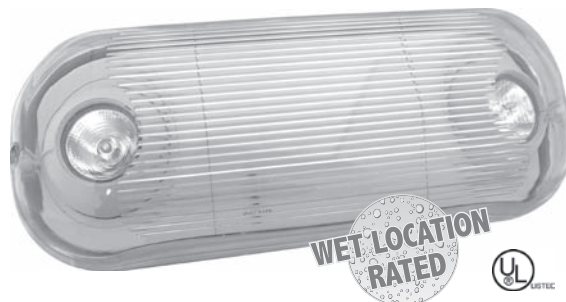
ORDER INFO

SERIES	Battery Type	Battery Voltage	Lamp Wattage	Housing Color	Damp Location	Emergency Operation
SKYRMR-16	Sealed Lead-Acid	6V	2x5.4W	White	Yes	90 Minutes

EMERGENCY LIGHTING

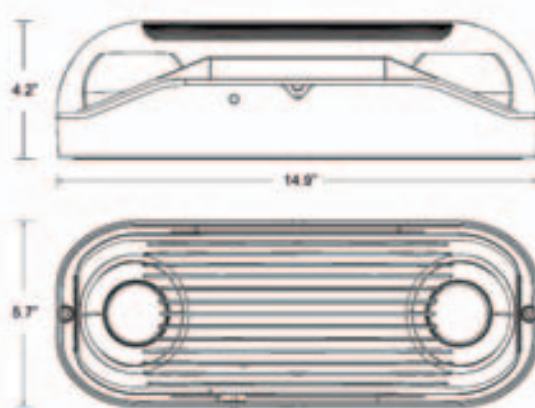
Model SKYRMR-16WP

Ideal for wet location/outdoor commercial and industrial facilities where economy, appearance and the ultimate ease of installation and maintenance are desired. Solid state electronics offer both reliability and low-cost performance.



FEATURES:

- ▶ Ultra-bright MR-16 halogen lamps
- ▶ 6-Volt, sealed lead acid, rechargeable, maintenance-free battery
- ▶ Completely self-contained
- ▶ v-5 flame retardant
- ▶ Automatic, low-voltage disconnect (LVD)
- ▶ Push-to-test switch
- ▶ Dual voltage, 120/277VAC operation
- ▶ UL listed for wet location
- ▶ High-impact resistant



ORDER INFO

SERIES	Battery Type	Battery Voltage	Lamp Wattage	Housing Color	Damp Location	Emergency Operation
SKYRMR-16WP	Sealed Lead-Acid	6V	2x5.4W	White	Yes	90 Minutes

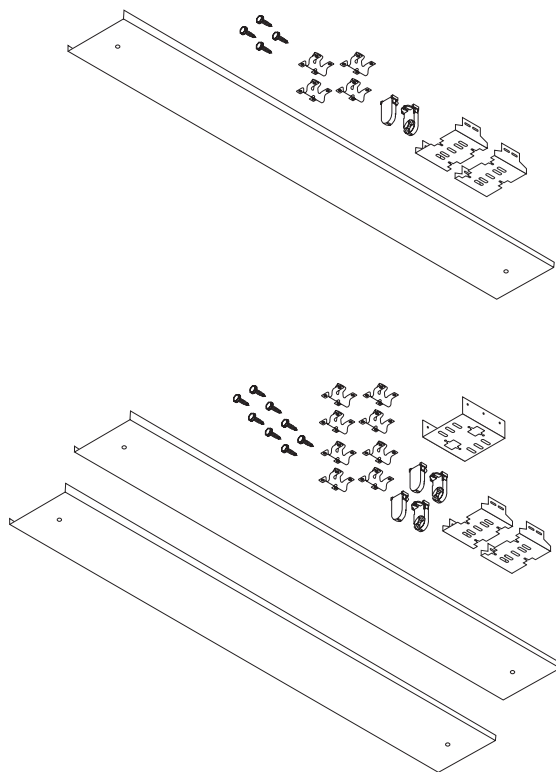
Skyline Retrofit kits are the fastest and most economical way to achieve energy savings in a commercial/industrial setting and at the same time improve the lighting environment. As part of the Energy Policy Act of 1992 and 2005, all T12 lamps and ballasts will no longer be available after 2012.

All Skyline reflectors are made of aluminum and are available in highly reflective specular aluminum or polyester white paint. They are also made in many configurations to meet a variety of lighting needs and applications. *(continued on next page)*

STRIP BALLAST COVER KIT

Model SKSP3

The Ballast Cover Kit is designed to convert standard 4 and 8 foot strip fixtures to use 2 or 4 T8 Or T5 bi-pin lamps. The kit contains ballast pan(s), sockets, end brackets, center bracket (for 8ft), quarter-turn fasteners and self-tapping screws. Fits existing fixture channels from 4.25" to 5.25" with adjustable bracket.



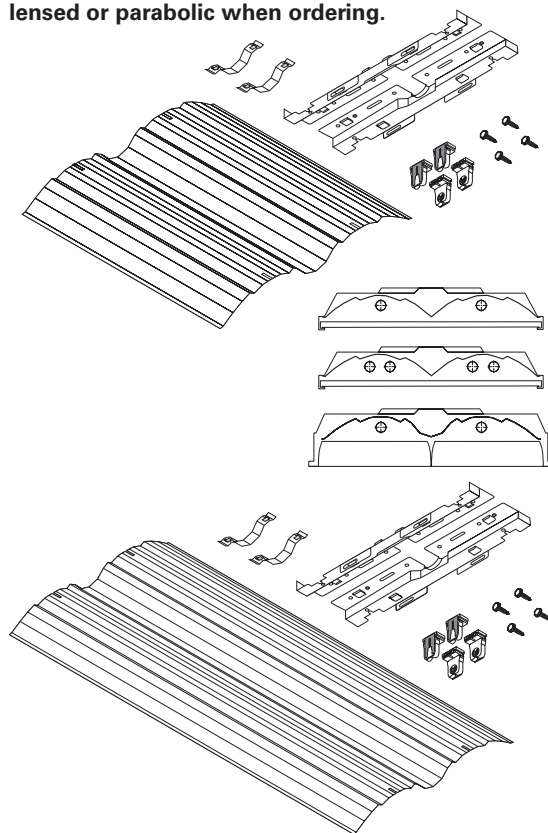
ORDER INFO

Material Type	Fixture Length	Number of Lamps	Socket Pin Option
White Aluminum	3 ft.	1	T5 Bi Pin
	4 ft.	2	T8 Bi Pin
	6 ft.	3	
	8 ft.	4	

TROFFER REFLECTOR KIT

Model SKLF1

The Troffer Reflector kit provides full coverage reflectors for 2x4 & 2x2 lensed or parabolic fixtures in a 2 and 4 lamp configuration. **Reflectors available in White reflective Polyester paint or Enhanced Specular Aluminum.** This kit maximizes fixture efficiency and provides superior light distribution. The reflector becomes the ballast cover for easy installation and tool-less maintenance access. Available in both T8 and T5 applications. **Specify for lensed or parabolic when ordering.**



ORDER INFO

Material Type	Fixture Length	Number of Lamps	Socket Pin Option
White Aluminum	2 ft.	2	T5 Bi Pin
	4 ft.	4	T8 Bi Pin

Brackets are all die formed and embossed for strength and uniformity, then painted with high temperature, baked white enamel to meet or exceed UL 1598. All components are classified by UL for use in retrofit applications. Reflectors are designed for maximum light output and uniform light distribution. Components are designed with rigid strength and for "tool-less" ballast access.

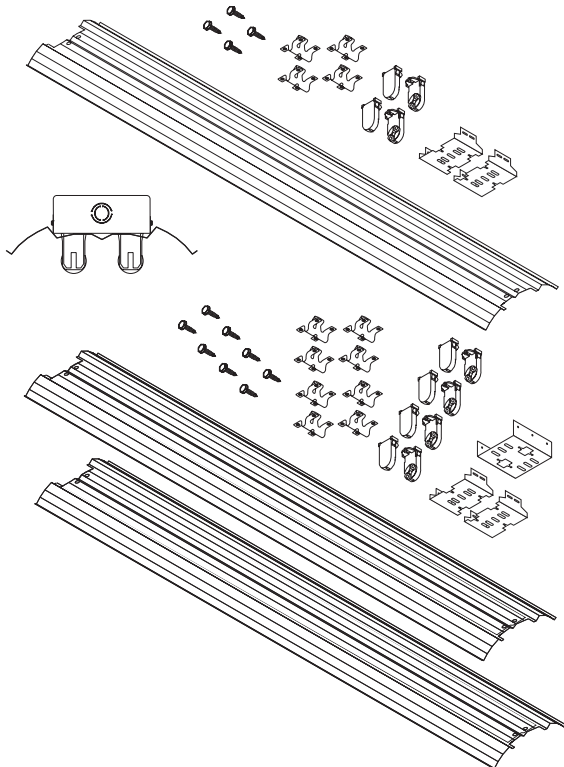
Each retrofit kit comes with reflectors (except the ballast cover, strip kits), lamp holder brackets, lamp holders, wire & tek screws. Installation is simply and easy and does not require the electrical disconnect of the existing fixture. Custom design is also offered for unique applications.

STRIP REFLECTOR KIT

Model SKSL

The Strip Reflector Kit is designed to convert standard 4 and 8 foot, T12 strip fixtures to a highly efficient T8 or T5. **The kit contains reflectors(s) in either White reflective Polyester paint or Enhanced specular Aluminum.** sockets, end brackets, center bracket (for 8ft), quarter – turn fasteners and self-tapping screws. Fits existing fixture channels from 4.25" to 5.25" with adjustable bracket.

AVAILABLE CONFIGURATIONS FOR: Ceilings above and below 16 feet and Broad and Focused beam spreads. **Specify when ordering.**



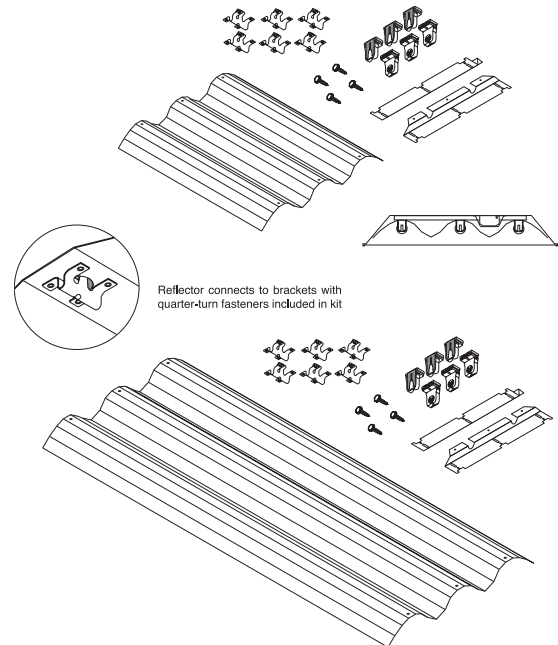
ORDER INFO

Material Type	Fixture Length	Number of Lamps	Socket Pin Option
White Aluminum	3 ft.	1	T5 Bi Pin
	4 ft.	2	T8 Bi Pin
Specular Enhanced Aluminum	6 ft.	3	
	8 ft.	4	

TROFFER REFLECTOR KIT

Model SKLG1

The Troffer Reflector kit provides full coverage reflectors for 2x4 & 2x2 lensed or parabolic fixtures in a 3 lamp configuration. The 3 lamp configuration maximizes both light output and energy efficiency. **Reflectors available in White reflective Polyester paint or Enhanced specular Aluminum.** This kit maximizes fixture efficiency and provides superior light distribution. The reflector becomes the ballast cover for easy installation and tool-less maintenance access. Available in both T8 and T5 applications. **Specify for lensed or parabolic when ordering**



Reflector connects to brackets with quarter-turn fasteners included in kit

ORDER INFO

Material Type	Fixture Length	Number of Lamps	Socket Pin Option
White Aluminum	2 ft.	3	T5 Bi Pin
	4 ft.		T8 Bi Pin

CUSTOM WORDING SIGN

Model SWSSLX

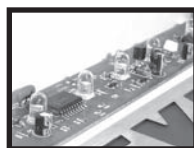


FEATURES:

- ▶ Black & White units available
- ▶ Each sign is custom made with 3.2 mil opaque matte vinyl
- ▶ Emergency operation of 90+ minutes on Battery Backup (EM) models
- ▶ Completely self-contained
- ▶ Fully automatic operation
- ▶ Compact, low-profile design
- ▶ Push-to-test switch
- ▶ Automatic, low-voltage disconnect (LVD)
- ▶ Dual 120V/277V operation
- ▶ Injection-molded, V-0 flame retardant, high-impact thermoplastic housing
- ▶ Charge rate/power on LED indicator light
- ▶ Energy consumption of 3.2 watts for red letters and 3.8 watts for green letters
- ▶ LED lamp life of 25+ years
- ▶ Universal mounting canopy for side or top installation
- ▶ Standard AC and emergency units available
- ▶ Ni-Cad battery on emergency (EM) units



Each sign is custom made to order with your specified wording.



Optional self-diagnostic/self-test feature offers the ultimate in worry-free maintenance and reliability.

ORDER INFO

SERIES	Canopy	# of Faces	Color	Housing Color	Options
SWSSLX	(Universal mounting canopy included)	1 2	Red Green	White Black	EM (Battery Backup) AC

T5 SIGNLIGHT



FEATURES:

- ▶ Internal ballast compartment—no remote ballast box needed!
- ▶ Heavy gauge, extruded aluminum body.
- ▶ Cast aluminum end plates.
- ▶ White powdercoat finish inside and outside.
- ▶ Clear extruded acrylic lens.
- ▶ CSA listed for wet & damp locations.
- ▶ Available in both 4 ft. & 8 ft. Lengths.
- ▶ Complete with 2 splice boxes and 2 caps.
- ▶ Uses T5 HO lamps for maximum light output.
- ▶ Shipped assembled in carton.
- ▶ Also available as a kit or wired with ballast.

ORDER INFO

SERIES	Length*	Width	Depth	# of Lamps Required
SKY-14T5	50 1/2"	5 7/8"	3 1/4"	1
SKY-24T5	50 1/2"	5 7/8"	3 1/4"	2
SKY-28T5	98 1/2"	5 7/8"	3 1/4"	3
SKY-48T5	98 1/2"	5 7/8"	3 1/4"	1

* Length is distance from center to center of conduit taps in splice boxes

SKYT5 EMERGENCY BALLASTS



SKYT5-500



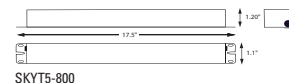
SKYT5-1300



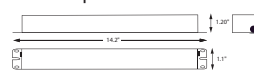
SKYT5-800

FEATURES:

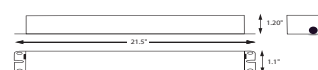
- ▶ Will cold start and operate all specified lamps
- ▶ Slim, low-profile design fits in smaller ballast compartments
- ▶ Long-life, high-temperature, recyclable Ni-Cad battery
- ▶ 90+ minute emergency operation
- ▶ Dual voltage 120/277V, 60Hz
- ▶ Time Delay Enhancement
- ▶ Open Circuit Isolation
- ▶ Includes test switch/charge indicator accessory kit
- ▶ Meets or exceeds all National Electrical Code and Life Safety Code
- ▶ Damp Location rated



SKYT5-800



SKYT5-500

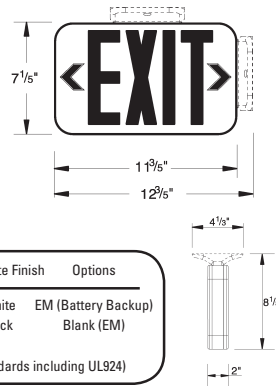


SKYT5-1300

ORDER INFO

SERIES	LUMENS	CURRENT	POWER	BATTERY CURRENT	TEMP RATING
SKYT5-500	450-500	127/120 mA	2.1/2.2 W	110 mA	32-122 °F
SKYT5-800	800	128/122 mA	2.1/2.3 W	110 mA	32-122 °F
SKYT5-1300	1300	126/122 mA	2.1/2.4 W	110 mA	32-122 °F

MINI LED EXIT SIGN



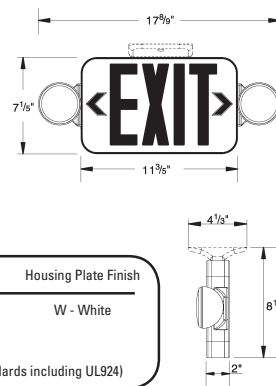
SERIES	Operation	# of Faces	Letter Color	Housing Plate Finish	Options
SLXM	Ni-Cad	1 - Single Face	R - Red	W - White	EM (Battery Backup)
		2 - Double Face	G - Green	B - Black	Blank (EM)

(UL Listed and complying with latest codes and performance standards including UL924)

FEATURES:

- ▶ Damp location listed
- ▶ Dual voltage 120/277 VAC operation
- ▶ Long life, energy saving LED lamps
- ▶ Fully adjustable glare free lighting heads
- ▶ Unit provided with test switch, status indicator and rechargeable Ni-Cad battery
- ▶ Injection molded, high impact, thermoplastic construction in black or white finishes
- ▶ Snap-fit faceplate installs without the use of tools
- ▶ Field replaceable chevron directional indicator knockouts
- ▶ Integral wiring channels to facilitate installation
- ▶ Universal mounting pattern knockout in backplate for J-box mounting
- ▶ Universal single face and double face (extra faceplate included)
- ▶ Maintenance-free sealed nickel cadmium battery

MINI LED EXIT / EMERGENCY COMBO



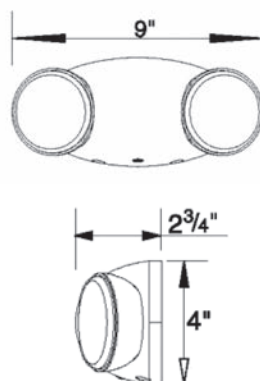
SERIES	Operation	# of Faces	Letter Color	Housing Plate Finish
SKYM	Ni-Cad	Universal	R - Red G - Green	W - White

(UL Listed and complying with latest codes and performance standards including UL924)

FEATURES:

- ▶ Long life, energy saving LED lamps
- ▶ Injection molded, high impact, thermoplastic construction in black or white finishes
- ▶ Snap-fit faceplate installs without the use of tools
- ▶ Field replaceable chevron directional indicator knockouts
- ▶ Integral wiring channels to facilitate installation
- ▶ Universal mounting pattern knockout in backplate for J-box mounting
- ▶ Universal single face and double face (extra faceplate included)
- ▶ Dual voltage 120/277 VAC operation
- ▶ Maintenance-free sealed nickel cadmium battery (optional)
- ▶ Unit provided with test switch, status indicator and rechargeable Ni-Cad battery
- ▶ Damp location listed

MINI LED ADJUSTABLE LIGHT



SERIES	HOUSING COLOR
XTRM	W - White B - Black

FEATURES:

- ▶ LED expected life is more than 10 years
- ▶ Injection-molded, high impact, UV-stabilized, UL 94 V-0 Thermoplastic
- ▶ Snap-together construction speeds installation
- ▶ Universal mounting plate with quick-connect feature
- ▶ Universal J-box pattern
- ▶ Fully adjustable glare-free lighting heads
- ▶ White housing is standard, with an optional black housing available
- ▶ Dual-voltage input 120V or 277V AC operation
- ▶ Emergency unit provided with test switch, status indicator and rechargeable battery
- ▶ Maintenance-free, Ni-Cad batteries provide 90 minutes of emergency power
- ▶ Damp location listed

LED SMALL WALL PACK

Model WPA15L



FEATURES:

- ▶ Die cast aluminum housing
- ▶ Hinged front frame
- ▶ Stainless steel hinge pins
- ▶ 1/2" coin plugs with o-rings for conduit
- ▶ Textured architectural bronze powdercoat finish over a chromate conversion coating
- ▶ Includes safety cable to prevent front frame impact when relamping
- ▶ Aluminum Reflector
- ▶ Prismatic borosilicate glass lens
- ▶ Cast-in template for mounting directly over 4" recessed outlet box or use 1/2 surface conduit
- ▶ CSA rated for wet locations
- ▶ 15 or 30 Watt available

LED SMALL SEMI-CUTOFF WALL PACK

Model WH15L



FEATURES:

- ▶ Die cast aluminum housing
- ▶ Hinged front frame
- ▶ 1/2" coin plugs with o-rings for conduit
- ▶ Textured architectural bronze powdercoat finish over a chromate conversion coating
- ▶ Tempered clear glass lens
- ▶ Cast-in template for mounting directly over 4" recessed outlet box or use 1/2 surface conduit
- ▶ CSA rated for wet locations
- ▶ 15 or 30 Watt available

LED MEDIUM SPOT FLOOD

Model FL46L



FEATURES:

- ▶ Die cast aluminum housing
- ▶ Hinged top frame
- ▶ Textured architectural bronze powdercoat finish over a chromate conversion coating
- ▶ Tempered clear glass lens
- ▶ Mounts on adjustable knuckle with angle indicators & 1/2 NPT threads or adjustable slipfitter with angle indicators
- ▶ CSA rated for wet locations
- ▶ 15 or 30 Watt available

DELUXE GARAGE LIGHTER

Model VNGL30L



FEATURES:

- ▶ Heavy duty round die cast aluminum housing
- ▶ Powdercoat finish over a chromate conversion coating
- ▶ Two piece aluminum reflector - upper section removes to create up light
- ▶ Clear polycarbonate prismatic optical refractor with gasket & hinged drop lens for easy relamping
- ▶ CSA rated for damp locations
- ▶ 15 or 30 Watt available

PRODUCT CERTIFICATION AND THE CSA MARK

CSA is one of the three largest certification laboratories for product testing and safety in North America, and is interchangeable with the UL certification and acceptance.

About CSA:

CSA is an independent, not-for-profit organization with certification and laboratory facilities that provide global services. CSA was founded in 1919, and CSA International (their testing and certification division) is fully accredited in the United States by the Occupational Safety and Health Association (OSHA) as a National Recognized Testing Laboratory (NRTL), and in Canada by the Standards Council of Canada (SCC). In addition, they are accredited by ANSI and NES, and test and certify products to U.S. standards and codes. All OSHA accredited laboratories must conduct testing to the same set of U.S. standards and codes, so the end certification is the same, regardless of which lab issues it. Among the U.S. standards that are used are American National Standards Institute (ANSI), American Society of Mechanical Engineers (ASME), American Society for Testing and Materials (ASTM), Canadian Standards Association (CSA), National Sanitation Foundation (NSF), Underwriters Laboratories (UL), and many others.

In addition, CSA has a staff of field representatives that carry out factory visits to ensure that CSA certified products continue to meet the standards. They conduct over 50,000 such visits per year, worldwide.

What a National Recognized Testing Laboratory Means to You:

The Occupational Health and Safety Administration (OSHA) accredits testing facilities in the U.S. and designates them as "Nationally Recognized Testing Laboratories (NRTLs)". This means that OSHA has found them to possess the capabilities, competence, calibration and control programs, independence, and reporting capabilities to test and certify that products meet U.S. standards according to OSHA's regulation 29 CFR 1910.7. All NRTLs test products to the same standards. CSA International has been accredited by OSHA since 1992.

About the CSA Mark:

The CSA mark means that the product has been tested and meets the applicable standards for performance and safety, whether those standards are written by ANSI (American National Standards Institute), UL (Underwriters Laboratory), CSA (Canadian Standards Association), NSF (National Sanitation Foundation International), or others. CSA marks appear on over 1 Billion products worldwide! CSA marks are widely recognized and accepted by authorities having jurisdiction (AHJ's) throughout North America, including the City of Los Angeles, CA, North Carolina, New York, Oregon, Washington, and hundreds of other state and municipal jurisdictions.

Why Marks Matter:

A product that has been tested and certified offers peace of mind to consumers, retailers, regulatory bodies, and specifiers. The CSA mark shows that the product meets recognized standards for safety and performance and has been independently tested. Some jurisdictions require certification marks on items sold within that jurisdiction, but even if they do not, the mark still provides a benefit by assuring everyone that the product has been independently tested and found compliant with prevailing standards. It indicates your commitment to your customers for their safety and satisfaction, and their confidence in your products is priceless.

The Product Certification Process:

Standards organizations (ANSI, UL, CSA, NSF, etc.) are responsible for developing the requirements for each type of product. They work with many different interested parties—consumers, industry representatives, regulatory agencies, etc.—to define the requirements needed, and then publish these as the standards. Some of these standards become mandatory through legislation, while the rest remain voluntary. Manufacturers then use these standards to develop products that meet the requirements. They then submit their products for testing and certification to an accredited testing organization, such as CSA. The testing organization tests the product, and if found to be in compliance with the applicable standards, issues a certification which allows the product to bear the testing organizations mark. They also perform regular follow-up inspections of the manufacturers' factory to ensure that the products continue to conform to the standards. Testing organizations are all accredited by OSHA (in the U.S.) or SCC (in Canada), and they are required to be accredited to certify products to national standards. Because of this process, the certification mark is widely respected and requested.

The Most Important Thing You Should Know:

All accredited testing laboratories are required to test to the exact same standards. This means that all "listed" lighting fixtures are tested to the bi-national U.S./Canadian standard, "UL 1598/CSA 22.2 No. 250.0-00, which was effective February 1, 2001. This standard replaced previous standards such as UL 1570, UL 1571, and UL1572.

Competition for Certification:

OSHA accredits multiple laboratories, and manufacturers can choose among them based on turnaround time, convenience, and price. Because all accredited test facilities evaluate products against the same standards, product selection in the marketplace can be based on brand, quality, and price rather than the certification mark on the product. Competition in the testing marketplace allows manufacturers to bring products to market quickly and economically, while still maintaining the testing required by the standards. This benefits everyone, from the manufacturer to the end user.

You're in Good Company:

We've joined thousands of other companies that rely on CSA International for their product testing and certification requirements. Among them are American Water Heater, Apple, Black & Decker, Delta, GE, Hewlett-Packard, Hubbell, IBM, Intermatic, Lennox Industries, Mitsubishi, Moen, Sanyo, and Whirlpool just to name a few. Even more importantly, the CSA mark is accepted at major retailers, manufacturers, and distributors in the U.S. and throughout the world. Some of the major retail chains carrying CSA marked products include Best Buy, Canadian Tire, The Home Depot, JC Penney, Lowes, Radio Shack, Sears, Spiegel, and Wal-Mart. Of course, there are many more not listed here.

For More Information:

Visit the CSA website at www.csa-international.org.



669 Berkmar Court
Charlottesville, VA 22901
Phone (434) 817-9595
Fax (434) 817-9596